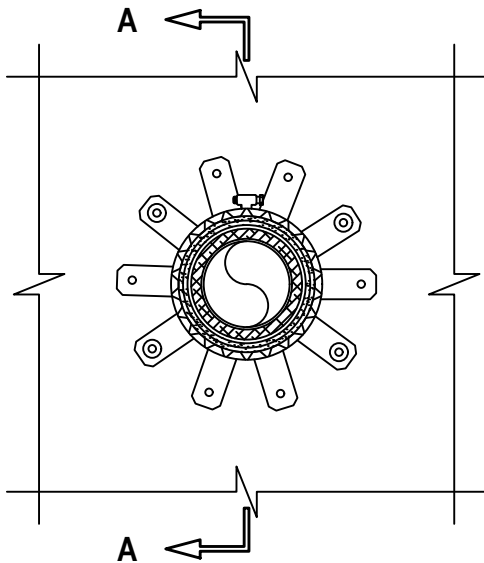


UL SYSTEM NO. W-L-2510  
**PLASTIC PIPE THROUGH GYPSUM WALL ASSEMBLY**

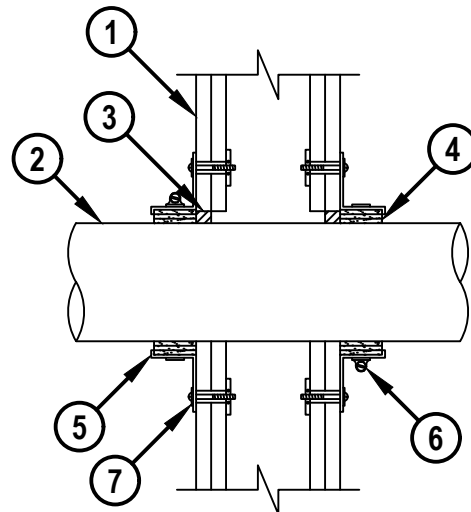
F-RATING = 1-HR. OR 2-HR.  
 T-RATING = 1/2-HR., 1-HR., 1 1/2 HR., OR 2-HR.

WL2510e.092619

**FRONT VIEW**



**SECTION A-A**



1. GYPSUM WALL ASSEMBLY (UL/cUL CLASSIFIED U300, U400, V400, OR W400 SERIES) (1-HR. OR 2-HR. FIRE-RATING) (2-HR. SHOWN) TO INCLUDE THE FOLLOWING CONSTRUCTION FEATURES :
  - A. [NOT SHOWN] WOOD STUDS TO CONSIST OF NOMINAL 2" x 4" LUMBER (SPACED MAXIMUM 16" OC). STEEL STUDS TO BE MINIMUM 3-1/2" WIDE (SPACED MAXIMUM 24" OC).
  - B. NOMINAL 5/8" THICK GYPSUM WALLBOARD. TYPE, NUMBER OF LAYERS, AND SHEET ORIENTATION AS SPECIFIED IN THE INDIVIDUAL UL DESIGN.



HILTI, Inc.  
 Plano, Texas USA (800) 879-8000

Sheet	1 of 2
Scale	1/8" = 1"
Date	Sep. 26, 2019

Drawing No.  
**WL  
 2510e**

*Saving Lives through Innovation and Education*

UL SYSTEM NO. W-L-2510

**PLASTIC PIPE THROUGH GYPSUM WALL ASSEMBLY**

F-RATING = 1-HR. OR 2-HR.

T-RATING = 1/2-HR., 1-HR., 1 1/2 HR., OR 2-HR.

WL2510e-092619

- 2. PENETRATING ITEM TO BE ONE OF THE FOLLOWING :
  - A. MAXIMUM 4" NOMINAL DIAMETER POLYPROPYLENE (PP) (SDR 11) PLASTIC PIPE (CLOSED OR VENTED PIPING SYSTEM).
  - B. MAXIMUM 4" NOMINAL DIAMETER AQUATHERM GREENPIPE (SDR 7.4 OR 11) (CLOSED OR VENTED PIPING SYSTEM).
  - C. MAXIMUM 8" (200mm OD) NOMINAL DIAMETER AQUATHERM GREENPIPE (SDR 7.4) (CLOSED PIPING SYSTEM ONLY).
  - D. MAXIMUM 4" NOMINAL DIAMETER POLYSTAR CT-WHITE (SDR 11, 9, OR 7.4) (MFG. BY ORION) (CLOSED PIPING SYSTEM ONLY).
  - E. MAXIMUM 4" NOMINAL DIAMETER CROSS-LINKED POLYETHYLENE (PEX) TUBING (SDR 9) (AQUAPEX OR WIRSBO HEPEX BY UPONOR) (CLOSED PIPING SYSTEM ONLY).
  - F. MAXIMUM 4" (125mm OD) NOMINAL DIAMETER NIRON PP-RCT PLASTIC PIPE (SDR 7.3, 11, OR 17) (CLOSED OR VENTED PIPING SYSTEM).
- 3. MINIMUM 5/8" DEPTH HILTI FS-ONE MAX INTUMESCENT FIRESTOP SEALANT FLUSH WITH EACH SIDE OF WALL.
- 4. HILTI CP 648E WRAP STRIP (NOMINAL 3/16" THICK x 1-3/4" WIDE) CONTINUOUSLY WRAPPED AROUND THE OUTER CIRCUMFERENCE OF THE PIPE, AS SPECIFIED IN THE TABLE BELOW, WITH ENDS BUTTED AND HELD IN PLACE WITH TAPE. WRAP STRIP TO BE BUTTED TIGHTLY AGAINST BOTH SURFACES OF GYPSUM WALL.
- 5. HILTI 1-3/4" RETAINING COLLAR WRAPPED OVER THE WRAP STRIPS, OVERLAPPING MINIMUM 1".
- 6. NOMINAL 1/2" WIDE STAINLESS STEEL HOSE CLAMP FASTENED AT MID-HEIGHT OF RETAINING COLLAR OR TWO NO. 8 SHEET METAL SCREWS AT OVERLAP LOCATION USED TO SECURE COLLAR TOGETHER.
- 7. MINIMUM 4 TABS OF RETAINING COLLAR (SYMMETRICALLY SPACED) SECURED ON BOTH SIDES OF WALL WITH 1/4" DIAMETER STEEL TOGGLER BOLTS WITH WASHERS.

NOM PIPE DIAM.	NO. OF LAYERS OF WRAP STRIP REQUIRED
8" (OR SMALLER)	4
4" (OR SMALLER)	3
2" (OR SMALLER)	2

NOTES : 1. MAXIMUM DIAMETER OF OPENING = 9".  
 2. ANNULAR SPACE = MINIMUM 0", MAXIMUM 1/2".



HILTI, Inc.  
 Plano, Texas USA (800) 879-8000

Sheet	1 of 2
Scale	-
Date	Sep. 26, 2019

Drawing No.  
**WL  
 2510e**