

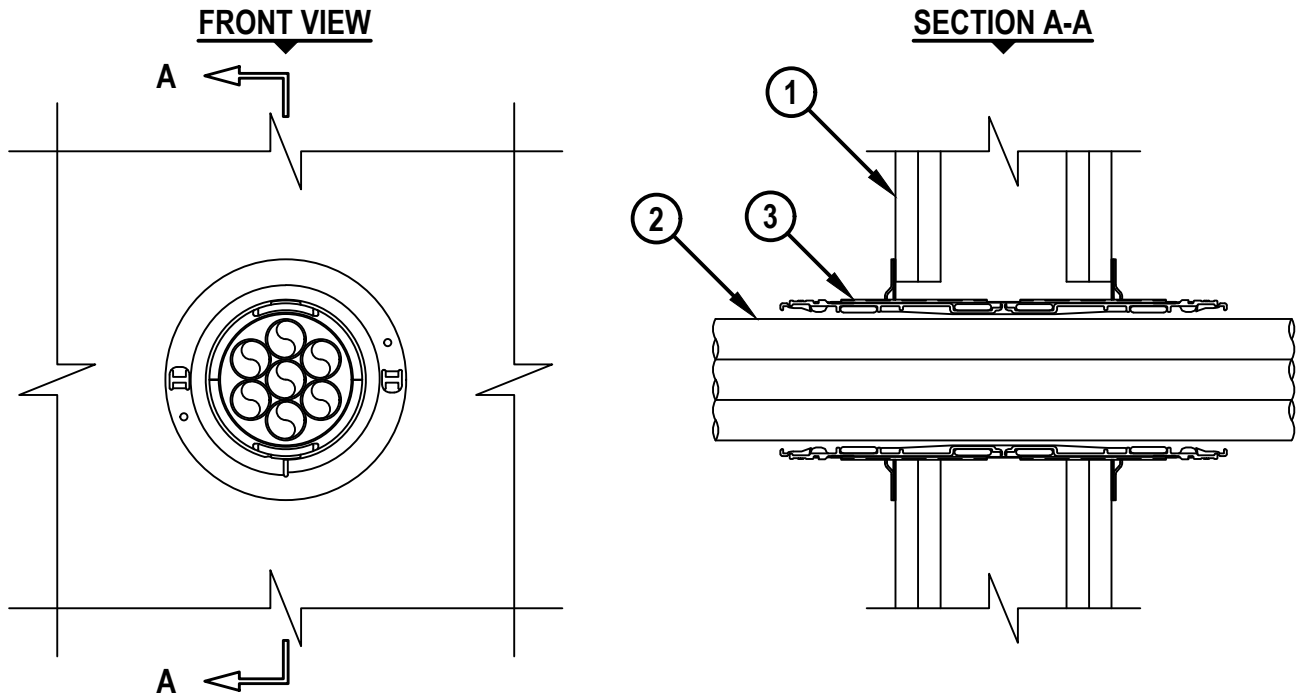
PEX LINES THROUGH GYPSUM WALL ASSEMBLY

F-RATING = 1-HR. OR 2-HR.

T-RATING = 0-HR. OR 1/4-HR.

NOTE : TESTED WITH A 2.5 Pa PRESSURE DIFFERENTIAL

WL2537h.020519



1. GYPSUM WALL ASSEMBLY (UL/cUL CLASSIFIED U300, U400, OR V400 SERIES) (1-HR. OR 2-HR. FIRE-RATING) (2-HR. SHOWN) TO INCLUDE THE FOLLOWING CONSTRUCTION FEATURES :
 - A. [NOT SHOWN] WOOD STUDS TO CONSIST OF NOMINAL 2" x 4" LUMBER (SPACED MAXIMUM 16" OC). STEEL STUDS TO BE MINIMUM 3-1/2" WIDE (SPACED MAXIMUM 24" OC).
 - B. NOMINAL 5/8" THICK GYPSUM WALLBOARD. TYPE, NUMBER OF LAYERS, AND SHEET ORIENTATION AS SPECIFIED IN THE INDIVIDUAL UL DESIGN.
2. MAXIMUM 1" NOMINAL DIAMETER CROSS-LINKED POLYETHYLENE (PEX) TUBING (SDR 9) (CLOSED OR VENTED PIPING SYSTEM).
3. HILTI CP 653 (BA) SPEED SLEEVE [2" OR 4"] OR HILTI CFS-SL GA L SPEED SLEEVE [4"] SLID INTO AND CENTERED WITHIN WALL. DEVICE FLANGES SPUN CLOCKWISE ONTO DEVICE THREADS OVER SMOKE GASKET, BUTTING TIGHTLY TO BOTH SIDES OF WALL.

- NOTES :
1. MAXIMUM DIAMETER OF OPENING = 2-1/2" (FOR 2" DEVICE) OR 4-1/2" (FOR 4" DEVICE).
 2. HILTI CFS-SL GA L SPEED SLEEVE SHALL ONLY BE USED IN WALLS 8" THICK OR GREATER.
 3. TUBING MAY REPRESENT 0% TO 100% VISUAL FILL OF DEVICE.
 4. ANNULAR SPACE BETWEEN DEVICE AND PERIPHERY OF OPENING = MINIMUM 0".
 5. [OPTIONAL] AS AN ALTERNATE TO SMOKE GASKET, MINIMUM 1/2" DEPTH HILTI FS-ONE MAX INTUMESCENT FIRESTOP SEALANT OR HILTI CP 606 FLEXIBLE FIRESTOP SEALANT FLUSH WITH BOTH SURFACES OF WALL WITH AN ADDITIONAL 1/4" BEAD APPLIED AT POINT OF CONTACT.



HILTI, Inc.
Plano, Texas USA (800) 879-8000

Sheet	1 of 1
Scale	3/16" = 1"
Date	Feb. 05, 2019

Drawing No.
WL
2537h