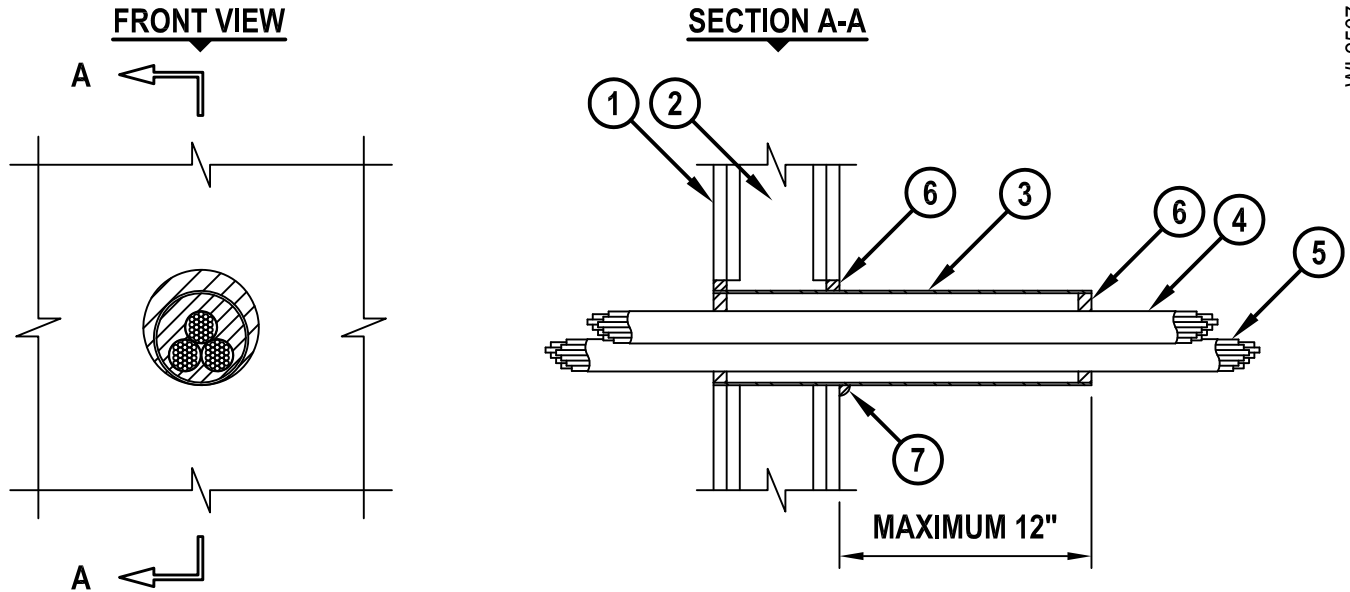


CABLE BUNDLE WITHIN NYLON RACEWAY THROUGH GYPSUM WALL ASSEMBLY

F-RATING = 1-HR. OR 2-HR.
T-RATING = 0-HR. OR 1-HR.

WL2567a.051712



1. GYPSUM WALL ASSEMBLY (UL/cUL CLASSIFIED U300, U400, OR V400 SERIES) (1-HR. OR 2-HR. FIRE-RATING) (2-HR. SHOWN).
2. [NOT SHOWN] WOOD STUDS TO CONSIST OF NOMINAL 2" x 4" LUMBER. STEEL STUDS TO BE MINIMUM 3-1/2" WIDE.
3. [OPTIONAL] MAXIMUM 4" NOMINAL DIAMETER STEEL PIPE (SCHEDULE 5 OR HEAVIER), STEEL CONDUIT OR EMT SLEEVE.
4. MAXIMUM 3" DIAMETER FLEXIBLE NYLON OPTICAL FIBER/COMMUNICATIONS CABLE ROUTING ASSEMBLY (UL LISTED FOR PLENUM INSTALLATION) WITH A MAXIMUM OF THREE 1-1/2" DIAMETER CELLS.
5. CABLE BUNDLE TO BE A COMBINATION OF ANY OF THE FOLLOWING :
 - A. MAXIMUM 100 PAIR NO. 24 AWG TELEPHONE CABLE WITH PVC JACKET.
 - B. MAXIMUM 24 FIBER OPTIC CABLE WITH PVC JACKET.
6. MINIMUM 5/8" DEPTH HILTI CP 618 FIRESTOP PUTTY STICK.
7. MINIMUM 1/2" BEAD HILTI CP 618 FIRESTOP PUTTY STICK APPLIED AT WALL/SLEEVE INTERFACE WHEN STEEL SLEEVE EXTENDS BEYOND ONE OR BOTH SIDES OF WALL.

NOTES : 1. MAXIMUM DIAMETER OF OPENING = 5-1/2".
 2. ANNULAR SPACE BETWEEN STEEL SLEEVE AND PERIPHERY OF OPENING = MINIMUM 0", MAXIMUM 1".
 3. ANNULAR SPACE BETWEEN CABLES INSIDE OF SLEEVE = MINIMUM 0", MAXIMUM 3".
 4. CABLES TO FILL MAXIMUM 80% EACH CELL OF FLEXIBLE NYLON CABLE ROUTING ASSEMBLY.
 5. CABLES TO FILL MAXIMUM 60% CROSS-SECTIONAL AREA OF SLEEVE.



HILTI, Inc.
Tulsa, Oklahoma USA (800) 879-8000

Sheet	1 of 1
Scale	7/64" = 1"
Date	May 17, 2012

Drawing No.
**WL
2567a**