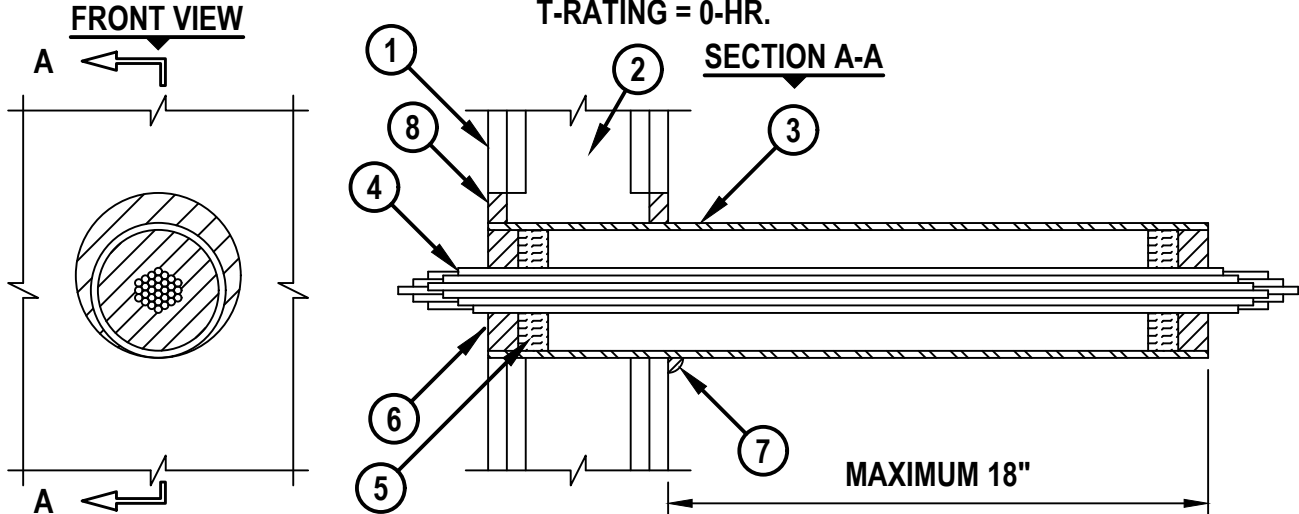


**CABLE BUNDLE IN A SLEEVE THROUGH GYPSUM WALL ASSEMBLY**

F-RATING = 1HR. OR 2-HR.

T-RATING = 0-HR.

WL3112h.062918



1. GYPSUM WALL ASSEMBLY (UL/cUL CLASSIFIED U300 OR U400 SERIES WALL) (1-HR. OR 2-HR. FIRE-RATING) (2-HR. SHOWN).
2. [NOT SHOWN] WOOD STUDS TO CONSIST OF NOMINAL 2" x 4" LUMBER. STEEL STUDS TO BE MINIMUM 2-1/2" WIDE.
3. MAXIMUM 4" NOMINAL DIAMETER STEEL PIPE SLEEVE (SCHEDULE 5 OR HEAVIER).
4. CABLE BUNDLE TO CONSIST OF ANY OF THE FOLLOWING (SEE NOTE NO. 3 BELOW) :
  - A. MAXIMUM 300 KCMIL SINGLE CONDUCTOR POWER CABLE (MTW, THHN, THWN, OR AWM) WITH PVC JACKET.
  - B. MAXIMUM 4-PAIR NO. 24 AWG TELEPHONE CABLE WITH PVC JACKET.
  - C. MAXIMUM 3/C NO. 12 AWG CABLE WITH PVC JACKET.
5. MINIMUM 1" THICKNESS MINERAL WOOL (MINIMUM 4 PCF DENSITY) TIGHTLY PACKED AND RECESSED TO ACCOMMODATE FIRESTOP SEALANT.
6. MINIMUM 1" DEPTH HILTI CP 618 FIRESTOP PUTTY STICK.
7. MINIMUM 1/2" BEAD HILTI CP 618 FIRESTOP PUTTY STICK OR HILTI FS-ONE MAX INTUMESCENT FIRESTOP SEALANT APPLIED AT WALL/PIPE SLEEVE INTERFACE.
8. MINIMUM 5/8" DEPTH HILTI CP 618 FIRESTOP PUTTY STICK OR HILTI FS-ONE MAX INTUMESCENT FIRESTOP SEALANT.

**NOTES :** 1. MAXIMUM DIAMETER OF OPENING = 5-1/2".  
 2. ANNULAR SPACE AROUND STEEL PIPE SLEEVE = MINIMUM 0", MAXIMUM 1".  
 3. CABLES TO FILL MAXIMUM 36% OF CROSS-SECTIONAL AREA OF STEEL PIPE SLEEVE.  
 4. STEEL PIPE SLEEVE MAY BE FLUSH WITH WALL SURFACE OR EXTEND UP TO 18" BEYOND WALL SURFACE IN ANY COMBINATION. WHEN SLEEVE IS FLUSH WITH WALL, APPLY HILTI CP 618 PUTTY STICK ONTO WALL SURFACE COMPLETELY COVERING PIPE SLEEVE. WHEN SLEEVE IS EXTENDED BEYOND ONE OR BOTH SIDES OF WALL, APPLY MINIMUM 1/2" BEAD HILTI FS-ONE MAX INTUMESCENT FIRESTOP SEALANT OR HILTI CP 618 FIRESTOP PUTTY STICK TO WALL/PIPE SLEEVE INTERFACE.  
 5. WHEN STEEL PIPE SLEEVE EXTENDS MORE THAN 5" BEYOND SURFACE OF THE WALL, THE SLEEVE SHOULD BE RIGIDLY SUPPORTED.



HILTI, Inc.  
 Plano, Texas USA (800) 879-8000

Sheet	1 of 1
Scale	5/32" = 1"
Date	June 29, 2018

Drawing No.  
**WL 3112h**