

CABLE BUNDLE IN A SLEEVE THROUGH GYPSUM WALL ASSEMBLY

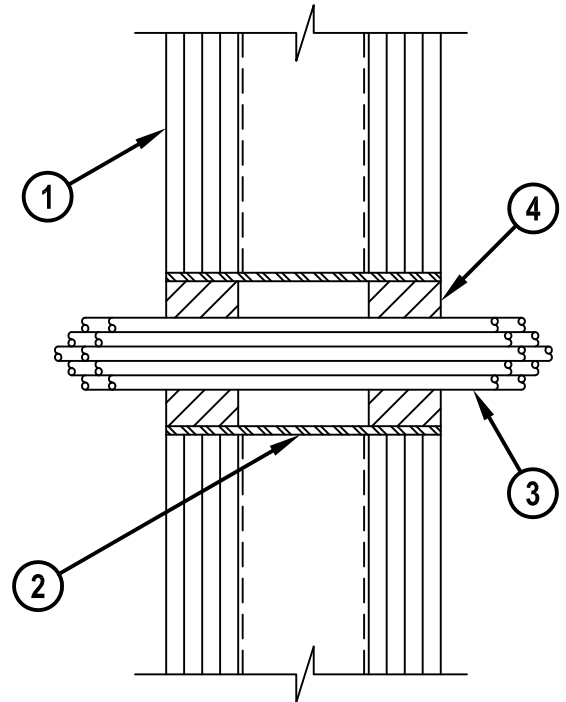
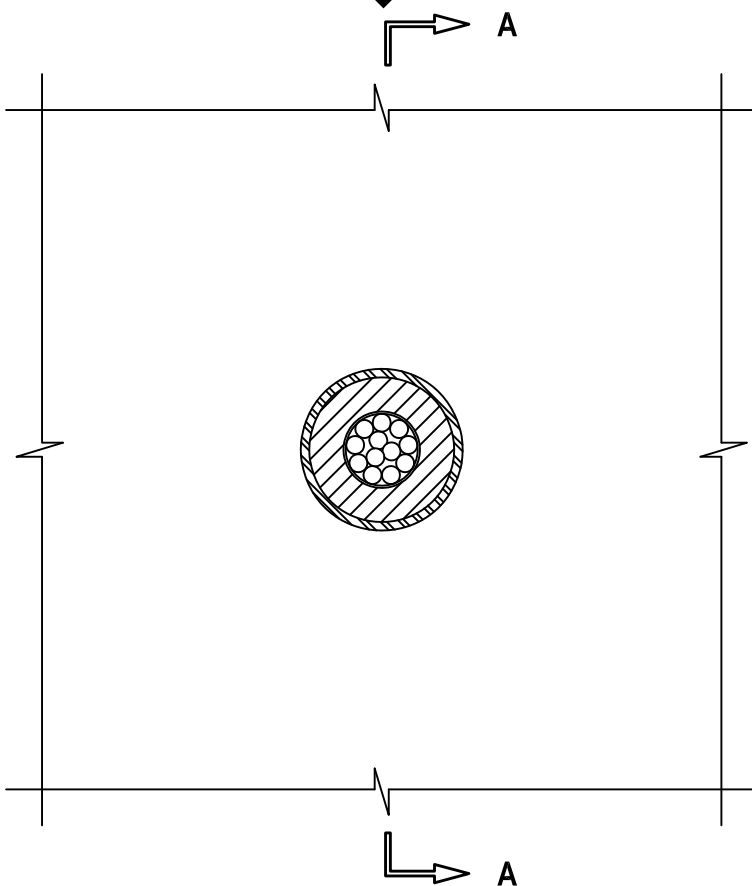
F-RATING = 4-HR.

T-RATING = 1-HR.

WL3139c.011415

FRONT VIEW

SECTION A-A



1. GYPSUM WALL ASSEMBLY (UL/cUL CLASSIFIED U400 SERIES) (4-HR. FIRE-RATING).
2. MAXIMUM 4" NOMINAL DIAMETER STEEL PIPE SLEEVE (SCHEDULE 40 OR HEAVIER).
3. CABLE BUNDLE TO CONSIST OF ANY OF THE FOLLOWING :
 - A. MAXIMUM 7/C NO. 12 AWG CABLE.
 - B. MAXIMUM 25 PAIR NO. 24 AWG TELEPHONE CABLE.
 - C. RG 59 COAXIAL CABLE.
 - D. 24 FIBER-OPTIC CABLE (MAX. 1/2" DIAMETER).
 - E. MAXIMUM 3/C NO. 10 AWG METAL-CLAD CABLE.
4. MINIMUM 2" DEPTH HILTI FS-ONE MAX OR FS-ONE INTUMESCENT FIRESTOP SEALANT.

NOTES : 1. MAXIMUM DIAMETER OF OPENING = 4".
 2. ANNULAR SPACE = MINIMUM 1/4", MAXIMUM 1".
 3. CABLES TO FILL MAXIMUM 33% OF CROSS-SECTIONAL AREA OF OPENING.



HILTI, Inc.
 Tulsa, Oklahoma USA (800) 879-8000

Sheet	1 of 1
Scale	3/16" = 1"
Date	Jan. 14, 2015

Drawing No.
**WL
 3139c**