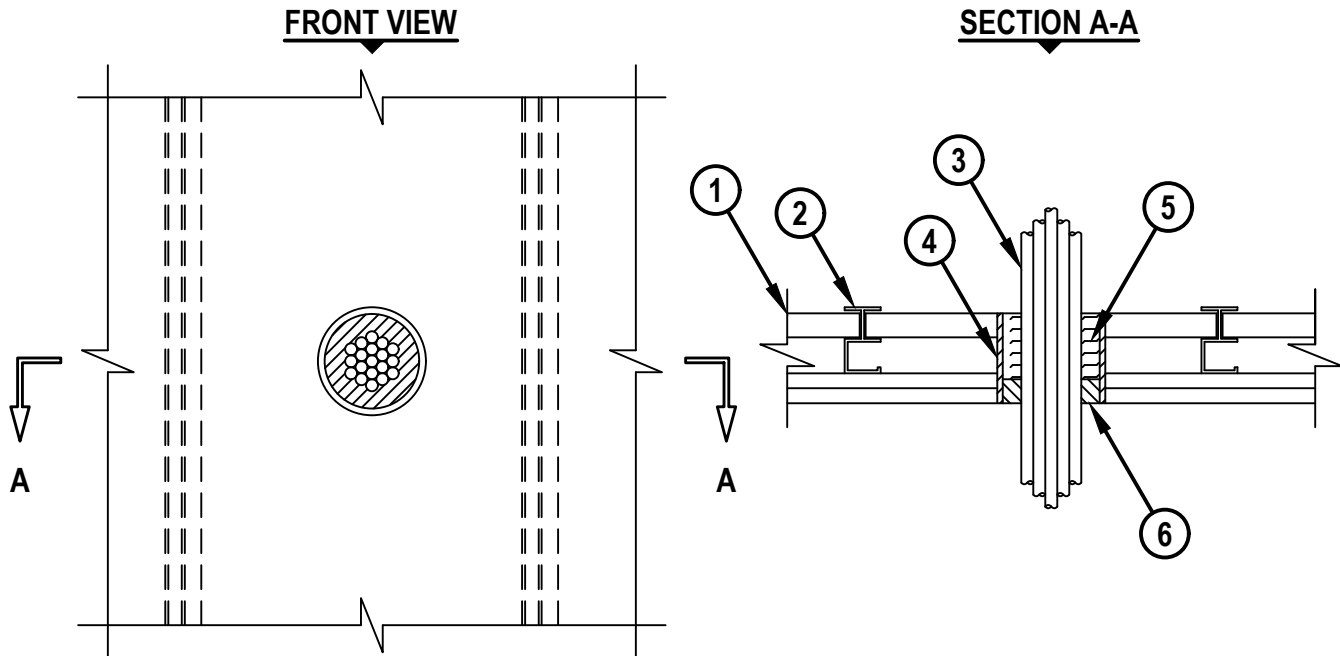


CABLE BUNDLE THROUGH GYPSUM SHAFT WALL ASSEMBLY

F-RATING = 1-HR. OR 2-HR.

T-RATING = 0-HR.

WL3161e.031317



1. GYPSUM SHAFT WALL ASSEMBLY (UL/cUL CLASSIFIED U400 SERIES) (1-HR. OR 2-HR. FIRE-RATING) (2-HR. SHOWN).
2. "C-T" SHAPED STUDS (1-5/8" WIDE x 2-1/2" DEEP, MIN. 25 GA.) SPACED A MAXIMUM 24" C/C.
3. CABLE BUNDLE TO CONSIST OF ANY OF THE FOLLOWING :
 - A. MAXIMUM 7/C NO. 12 AWG CABLE.
 - B. MAXIMUM 25 PAIR NO. 24 AWG TELEPHONE CABLE.
 - C. RG 59 COAXIAL CABLE.
 - D. MAXIMUM 3/C NO. 12 AWG METAL CLAD CABLE.
 - E. MAXIMUM 5/8" DIAMETER FIBER-OPTIC CABLE.
4. MAXIMUM 4" DIAMETER STEEL SLEEVE (MIN. 28 GA. SHEET METAL OR NO. 8 STEEL WIRE MESH).
5. MIN. 2-1/8" OR 2-3/4" THICKNESS MINERAL WOOL (MIN. 4 PCF DENSITY) TIGHTLY PACKED AND RECESSED ON ONE SIDE OF THE WALL, FOR 1-HR. OR 2-HR. FIRE-RATED WALLS, RESPECTIVELY.
6. MINIMUM 1" DEPTH HILTI FS-ONE MAX INTUMESCENT FIRESTOP SEALANT.

NOTES : 1. MAXIMUM DIAMETER OF OPENING = 4".
 2. CABLES TO FILL A MAXIMUM 33% OF CROSS-SECTIONAL AREA OF OPENING.
 3. ANNULAR SPACE = MINIMUM 1/4", MAXIMUM 3/4".
 4. AS AN ALTERNATE TO THE ABOVE SHAFT WALL ASSEMBLY, A 1 OR 2-HR. GYPSUM WALL ASSEMBLY MAY BE USED (U300, U400 OR V400 SERIES). STEEL STUDS TO BE MINIMUM 2-1/2" WIDE. WOOD STUDS TO CONSIST OF NOMINAL 2 x 4 LUMBER.
 5. WHEN SYSTEM IS INSTALLED IN A STANDARD WALL ASSEMBLY, MINERAL WOOL SHOULD BE INSTALLED FLUSH WITH EITHER SIDE OF WALL AND RECESSED FROM OTHER SIDE TO ACCOMMODATE SEALANT.



HILTI, Inc.
 Plano, Texas USA (800) 879-8000

Sheet	1 of 1
Scale	1/8" = 1"
Date	Mar. 13, 2017

Drawing No.
WL 3161e