

CABLE BUNDLE THROUGH "UNIQUE FIRESTOP SLEEVE" IN GYPSUM WALL ASSEMBLY

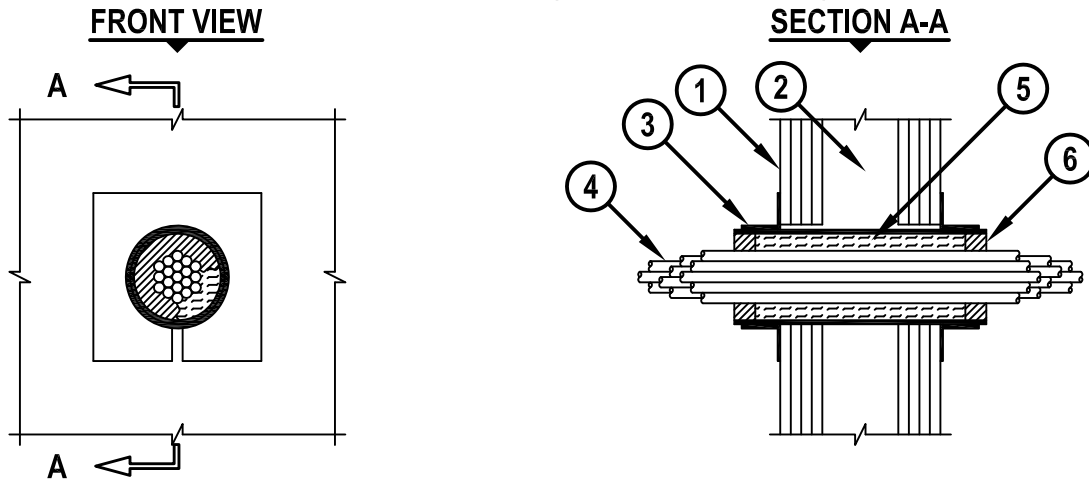
F-RATING = 3-HR. OR 4-HR.

T-RATING = 3-HR.

L-RATING AT AMBIENT = (SEE TABLE BELOW)

L-RATING AT 400°F = (SEE TABLE BELOW)

WL3273c.022912



1. GYPSUM WALL ASSEMBLY (UL/cUL CLASSIFIED U400 OR V400 SERIES) (3-HR. OR 4-HR. FIRE-RATING) (4-HR. SHOWN).
2. [NOT SHOWN] STEEL STUDS TO BE MINIMUM 3-1/2" WIDE.
3. SPLIT SLEEVE OR THREADED SLEEVE (1", 2", AND 4" SIZES) MANUFACTURED BY UNIQUE FIRE STOP PRODUCTS, INC. INSTALLED PER ACCOMPANYING INSTALLATION INSTRUCTIONS.
4. CABLE BUNDLE TO CONSIST OF ANY OF THE FOLLOWING :
 - A. MAXIMUM RG59/U COAXIAL CABLE WITH PVC JACKET.
 - B. MAXIMUM 62.5/48 FIBER-OPTIC CABLE WITH PVC JACKET.
 - C. MAXIMUM 4 PAIR NO. 24 AWG COPPER CONDUCTOR DATA CABLE WITH PVC JACKET.
5. MINERAL WOOL (MIN. 4 PCF DENSITY) TIGHTLY PACKED WITHIN THE SLEEVE AND RECESSED FROM EACH END OF DEVICE TO ACCOMMODATE FIRESTOP PUTTY.
6. MINIMUM 1" DEPTH HILTI CP 618 FIRESTOP PUTTY STICK.

FIRESTOP DEVICE	L-RATING, CFM/SQ FT (CFM/FIRESTOP DEVICE)	
	AMBIENT	400°F
THREADED SLEEVE	22 (2)	18 (2)
SPLIT SLEEVE	54 (5)	47 (4)

NOTES : 1. MAXIMUM DIAMETER OF OPENING FOR 1", 2", AND 4" SLEEVES ARE 1-1/4", 2-7/16", AND 4-1/2", RESPECTIVELY.
 2. ANNULAR SPACE BETWEEN CABLE BUNDLE AND PERIPHERY OF OPENING = MINIMUM 1/4", MAXIMUM 1-1/4".
 3. CABLES TO FILL MINIMUM 8% TO MAXIMUM 48% OF CROSS-SECTIONAL AREA OF SLEEVE.



HILTI, Inc.
 Tulsa, Oklahoma USA (800) 879-8000

Sheet	1 of 1
Scale	7/64" = 1"
Date	Feb. 29, 2012

Drawing No.
**WL
 3273c**