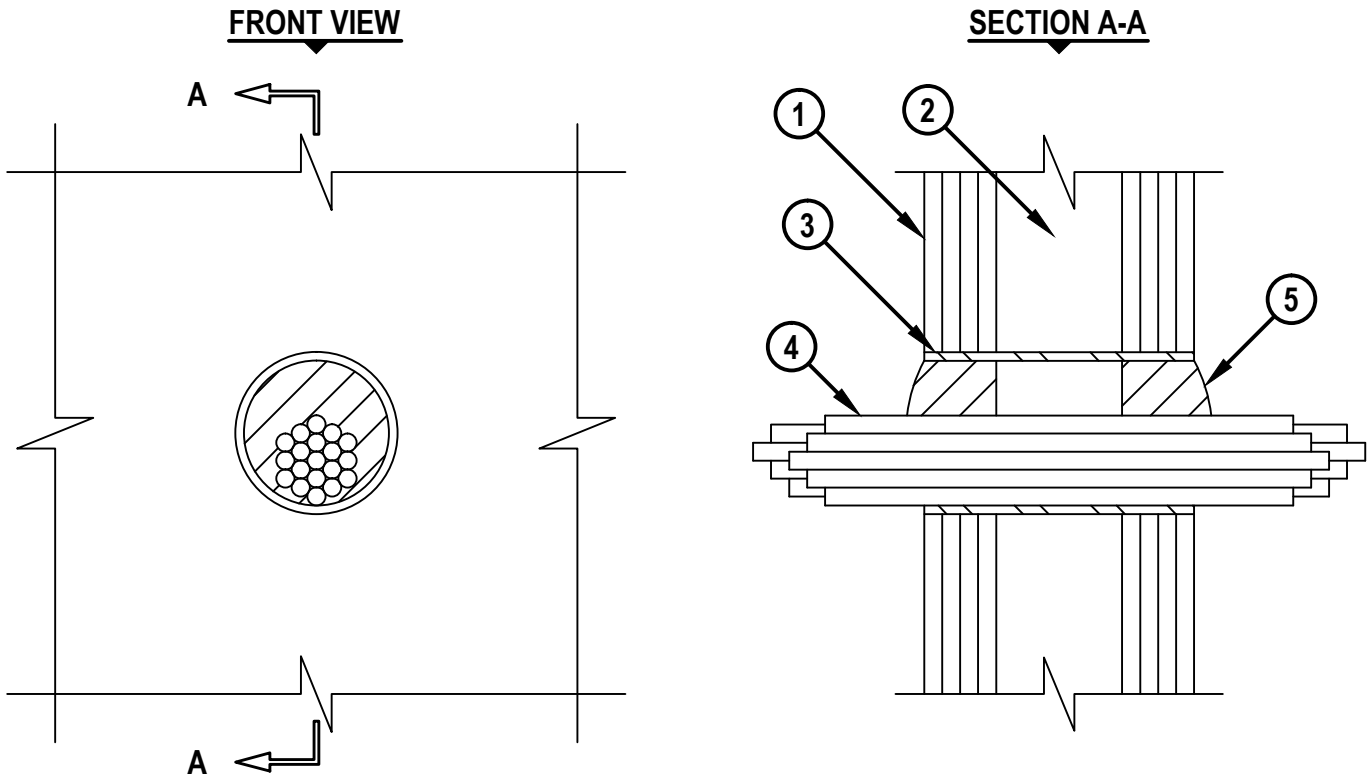


**CABLE BUNDLE THROUGH GYPSUM WALL ASSEMBLY**

F-RATING = 3-HR. OR 4-HR.  
T-RATING = 3/4-HR. OR 1-HR.

WL3277b.01112



1. GYPSUM WALL ASSEMBLY (UL/cUL CLASSIFIED U400 OR V400 SERIES) (3-HR. OR 4-HR. FIRE-RATING) (4-HR. SHOWN).
2. [NOT SHOWN] STEEL STUDS TO BE MINIMUM 3-1/2" WIDE.
3. NOMINAL 2" OR 4" DIAMETER STEEL PIPE SLEEVE (SCHEDULE 40 OR HEAVIER) FRICTION FITTED INTO OPENING.
4. CABLE BUNDLE TO BE A COMBINATION OF ANY OF THE FOLLOWING :
  - A. TYPE RG/6 COAXIAL CABLE WITH FLUORINATED ETHYLENE JACKET.
  - B. MAXIMUM 150 PAIR NO. 24 AWG TELEPHONE CABLE WITH PVC JACKET.
  - C. MAXIMUM 3/C NO. 12 AWG METAL CLAD CABLE.
  - D. MAXIMUM 1/C NO. 750 KCMIL POWER CABLE WITH PVC JACKET.
5. TWO HILTI CFS-PL FIRESTOP PLUGS OR HILTI CP 658T FIRESTOP PLUGS CUT TO FIT AROUND THE CABLE BUNDLE AND INSTALLED TIGHTLY WITHIN SLEEVE SUCH THAT THE OUTER CIRCUMFERENCE OF THE DOME SHAPED PLUG IS FLUSH WITH BOTH ENDS OF SLEEVE.

NOTES : 1. NOMINAL DIAMETER OF OPENING = 2" OR 4".  
 2. ANNULAR SPACE = MINIMUM 0", MAXIMUM 1-5/8".  
 3. CABLES TO FILL MAXIMUM 33% OF CROSS-SECTIONAL AREA OF SLEEVE.



HILTI, Inc.  
Tulsa, Oklahoma USA (800) 879-8000

Sheet	1 of 1
Scale	3/16" = 1"
Date	Jan. 11, 2012

Drawing No.  
**WL 3277b**