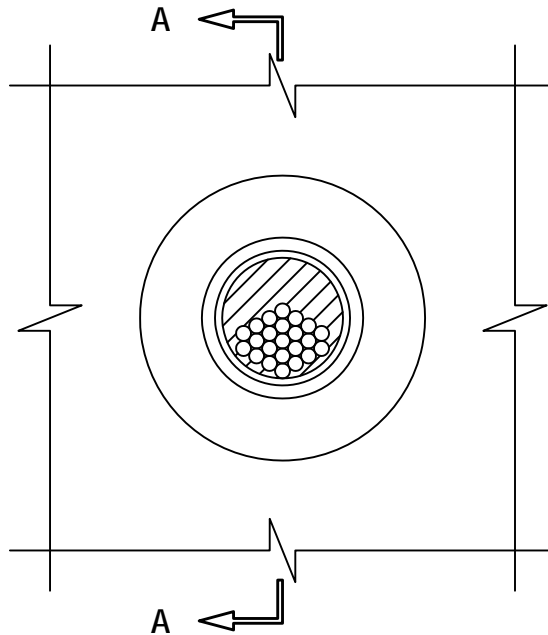


# CABLE BUNDLE THROUGH "UNIQUE FIRESTOP SLEEVE" IN GYPSUM WALL ASSEMBLY

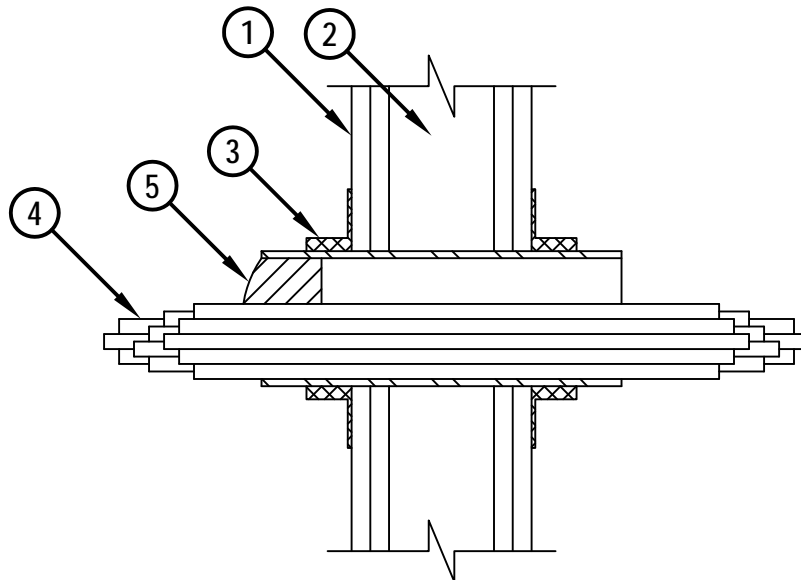
F-RATING = 1-HR. OR 2-HR.  
T-RATING = 0-HR.  
L-RATING AT AMBIENT = (SEE TABLE BELOW)  
L-RATING AT 400°F = (SEE TABLE BELOW)

WL3282d.031212

FRONT VIEW



SECTION A-A



HILTI, Inc.  
Tulsa, Oklahoma USA (800) 879-8000

Sheet	1 of 2
Scale	5/32" = 1"
Date	Mar. 12, 2012

Drawing No.  
**WL  
3282d**

**CABLE BUNDLE THROUGH "UNIQUE FIRESTOP SLEEVE" IN GYPSUM WALL ASSEMBLY**

F-RATING = 1-HR. OR 2-HR.  
 T-RATING = 0-HR.  
 L-RATING AT AMBIENT = (SEE TABLE BELOW)  
 L-RATING AT 400°F = (SEE TABLE BELOW)

WL3282d.031212

1. GYPSUM WALL ASSEMBLY (UL/cUL CLASSIFIED U300, U400, V400, OR W400 SERIES) (1-HR. OR 2-HR. FIRE-RATING).
2. [NOT SHOWN] WOOD STUDS TO CONSIST OF NOMINAL 2" x 4" LUMBER (SPACED MAXIMUM 16" O/C). STEEL STUDS TO BE MINIMUM 3-1/2" WIDE (SPACED MAXIMUM 24" O/C).
3. UNIQUE FIRESTOP PRODUCTS, DIVISION OF "IT'S UNIQUE" INC. SMOOTH SLEEVE, THREADED SLEEVE, OR SPLIT SLEEVE (2" AND 4" SIZES).
4. CABLE BUNDLE TO BE A COMBINATION OF ANY OF THE FOLLOWING :
  - A. MAXIMUM 300 PAIR NO. 24 AWG TELEPHONE CABLE WITH PVC JACKET.
  - B. MAXIMUM 750 KCMIL POWER CABLE WITH PVC JACKET.
  - C. MAXIMUM 7/C NO. 12 AWG POWER CABLE WITH PVC JACKET.
  - D. MAXIMUM 1/2" DIAMETER FIBER-OPTIC CABLE (MAXIMUM 24 FIBER).
  - E. MAXIMUM 3/C NO. 12 AWG METAL-CLAD CABLE WITH PVC JACKET.
  - F. MAXIMUM 1" DIAMETER METAL-CLAD TEK CABLE WITH PVC JACKET.
  - G. MAXIMUM 2/0 ALUMINUM SER CABLE.
  - H. TYPE RG 59/U COAXIAL CABLE WITH PVC JACKET.
5. ONE HILTI CFS-PL FIRESTOP PLUG OR HILTI CP 658T FIRESTOP PLUG CUT TO FIT AROUND THE CABLE BUNDLE AND INSTALLED TIGHTLY WITHIN SLEEVE SUCH THAT THE OUTER CIRCUMFERENCE OF THE DOME SHAPED PLUG IS FLUSH WITH EITHER END OF SLEEVE. WHEN SPLIT SLEEVE IS USED, INSTALL TWO HILTI CFS-PL FIRESTOP PLUG OR HILTI CP 658T FIRESTOP PLUGS, FLUSH WITH BOTH ENDS OF SLEEVE.

FIRESTOP DEVICE	L-RATING, CFM/SQ FT (CFM/FIRESTOP DEVICE)	
	AMBIENT	400°F
SMOOTH SLEEVE	37 (3)	18 (2)
THREADED SLEEVE	37 (3)	18 (2)
SPLIT SLEEVE	54 (5)	47 (4)

NOTES : 1. MAXIMUM DIAMETER OF OPENING IN WALL FOR 2" AND 4" SIZES ARE 2-7/16" AND 4-1/2", RESPECTIVELY.  
 2. CABLES TO FILL MAXIMUM 50% OF CROSS-SECTIONAL AREA OF OPENING.  
 3. ANNULAR SPACE = MINIMUM 0", MAXIMUM 3".



HILTI, Inc.  
 Tulsa, Oklahoma USA (800) 879-8000

Sheet	2 of 2
Scale	-
Date	Mar. 12, 2012

Drawing No.  
**WL  
 3282d**