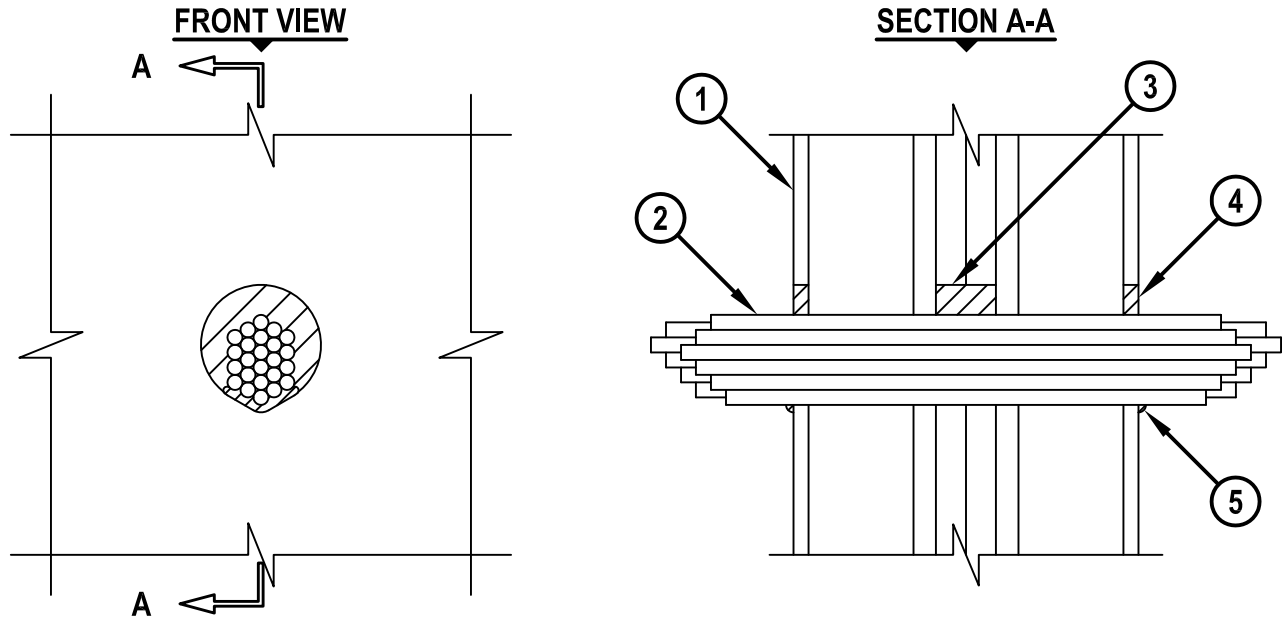


CABLE BUNDLE THROUGH GYPSUM WALL ASSEMBLY

F-RATING = 2-HR.
T-RATING = 0-HR.

WL3307c.011415



1. GYPSUM WALL ASSEMBLY (UL/cUL CLASSIFIED U300 SERIES) (2-HR. FIRE-RATING) CONSISTING OF THE FOLLOWING :
 - A. NOMINAL 2 x 4 STUDS SPACED MAXIMUM 24" OC.
 - B. STEEL "H" SHAPED STUDS SPACED MAXIMUM 24" OC.
 - C. TWO LAYERS 1" GYPSUM WALLBOARD LINER PANELS.
 - D. MINIMUM 1/2" THICK GYPSUM WALLBOARD.
2. CABLE BUNDLE TO BE A COMBINATION OF ANY OF THE FOLLOWING :
 - A. MAXIMUM 7/C NO. 12 AWG WITH PVC JACKET.
 - B. MAXIMUM 150 PAIR NO. 24 AWG TELEPHONE CABLE WITH PVC JACKET.
 - C. MAXIMUM RG6/U COAXIAL CABLE WITH PVC JACKET.
 - D. MAXIMUM 3/C NO. 8 AWG METAL CLAD CABLE.
 - E. MAXIMUM 3/C (+ GROUND) NO. 8 AWG ROMEX CABLE WITH PVC JACKET.
3. MINIMUM 2" DEPTH HILTI FS-ONE MAX OR FS-ONE INTUMESCENT FIRESTOP SEALANT APPLIED WITHIN GYPSUM WALLBOARD LINER PANELS.
4. MINIMUM 1/2" DEPTH HILTI FS-ONE MAX OR FS-ONE INTUMESCENT FIRESTOP SEALANT APPLIED FLUSH WITH OUTER SURFACES OF GYPSUM WALLBOARD.
5. MINIMUM 1/4" BEAD HILTI FS-ONE MAX OR FS-ONE INTUMESCENT FIRESTOP SEALANT APPLIED AT POINT OF CONTACT AT OUTER SURFACE OF GYPSUM WALLBOARD.

NOTES : 1. MAXIMUM DIAMETER OF OPENING = 4".
 2. ANNULAR SPACE = MINIMUM 0", MAXIMUM 1".
 3. CABLES TO FILL MAXIMUM 45% OF CROSS-SECTIONAL AREA OF OPENING.



HILTI, Inc.
Tulsa, Oklahoma USA (800) 879-8000

Sheet	1 of 1
Scale	5/32" = 1"
Date	Jan. 14, 2015

Drawing No.
**WL
3307c**