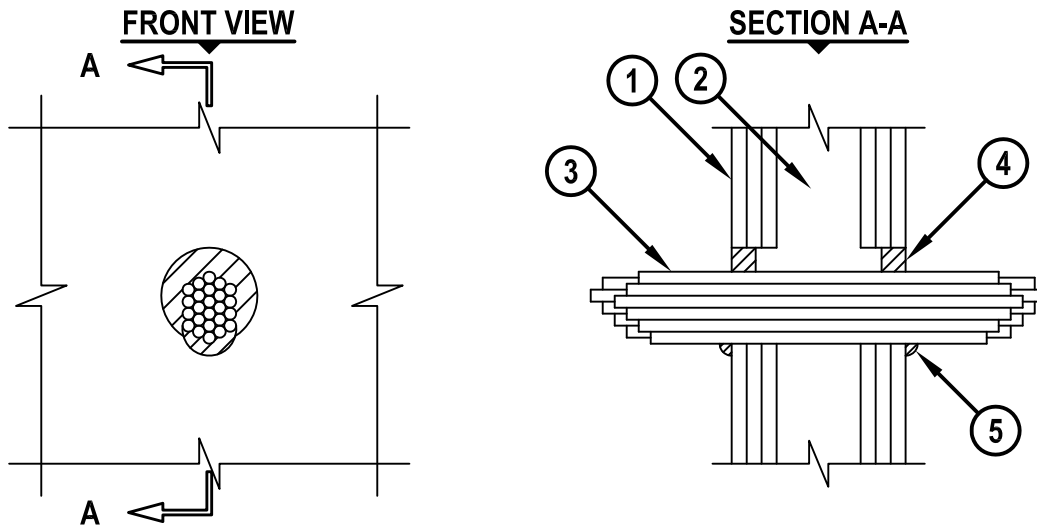


**CABLE BUNDLE THROUGH GYPSUM WALL ASSEMBLY**

F-RATING = 1-HR., 2-HR., OR 3-HR.

T-RATING = 0-HR.

WL3385c.010816



1. GYPSUM WALL ASSEMBLY (UL/cUL CLASSIFIED U300, U400, V400, OR W400 SERIES) (1-HR., 2-HR., OR 3-HR. FIRE-RATING) (3-HR. SHOWN).
2. [NOT SHOWN] WOOD STUDS TO CONSIST OF NOMINAL 2" x 4" LUMBER. STEEL STUDS TO BE MINIMUM 3-1/2" WIDE.
3. CABLE BUNDLE TO BE A COMBINATION OF ANY OF THE FOLLOWING :
  - A. MAXIMUM 7/C NO. 12 AWG COPPER CONDUCTOR CONTROL CABLE WITH PVC INSULATION AND JACKET.
  - B. MAXIMUM 25 PAIR NO. 24 AWG TELEPHONE CABLE WITH PVC INSULATION AND JACKET.
  - C. MAXIMUM 4 PAIR NO. 22 AWG CAT 5 OR CAT 6 COMPUTER CABLE.
  - D. MAXIMUM 1/2" DIAMETER TYPE RG/U COAXIAL CABLE WITH PE INSULATION AND PVC JACKET.
  - E. MAXIMUM RG 6/U COAXIAL CABLE WITH FLUORINATED ETHYLENE INSULATION AND JACKET.
  - F. MAXIMUM 5/8" DIAMETER MULTIPLE FIBER OPTIC COMMUNICATION CABLE WITH PVC JACKET.
  - G. MAXIMUM 3/C COPPER CONDUCTOR NO. 8 AWG METAL CLAD CABLE.
  - H. MAXIMUM 3/C (+GRND) NO. 8 AWG COPPER CONDUCTOR CABLE WITH PVC INSULATION AND JACKET.
  - I. ANY CABLES, METAL-CLAD CABLE, OR ARMORED CABLE CURRENTLY CLASSIFIED UNDER THE THROUGH PENETRATING PRODUCTS CATEGORY.
4. HILTI FS-ONE MAX OR FS-ONE INTUMESCENT FIRESTOP SEALANT OR HILTI CP 606 FLEXIBLE FIRESTOP SEALANT :
  - A. MINIMUM 5/8" DEPTH REQUIRED FOR 1-HR. OR 2-HR. FIRE-RATING.
  - B. MINIMUM 1" DEPTH REQUIRED FOR 3-HR. FIRE-RATING.
5. MINIMUM 1/2" BEAD HILTI FS-ONE MAX OR FS-ONE INTUMESCENT FIRESTOP SEALANT OR HILTI CP 606 FLEXIBLE FIRESTOP SEALANT APPLIED AT CABLE BUNDLE/WALL INTERFACE ON BOTH SIDES OF WALL.

NOTES : 1. MAXIMUM DIAMETER OF OPENING = 4".  
 2. ANNULAR SPACE = MINIMUM 0", MAXIMUM 7/8".  
 3. CABLES TO FILL MAXIMUM 45% OF CROSS-SECTIONAL AREA OF OPENING.

 <b>Hilti Firestop Systems</b>	HILTI, Inc. Plano, Texas USA (800) 879-8000	Sheet 1 of 1 Scale 1/8" = 1" Date Jan. 08, 2016	Drawing No. <b>WL 3385c</b>
	<i>Saving Lives through Innovation and Education</i>		