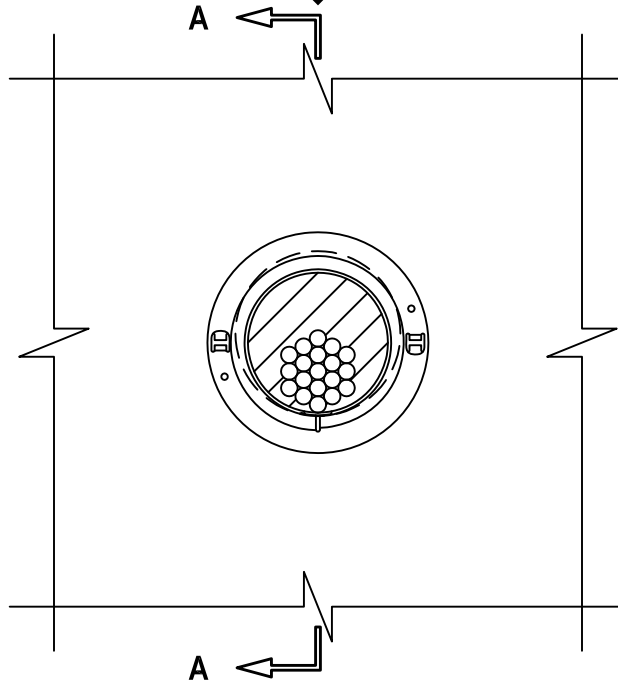


UL/cUL SYSTEM NO. W-L-3394  
**CABLE BUNDLE THROUGH GYPSUM WALL ASSEMBLY**

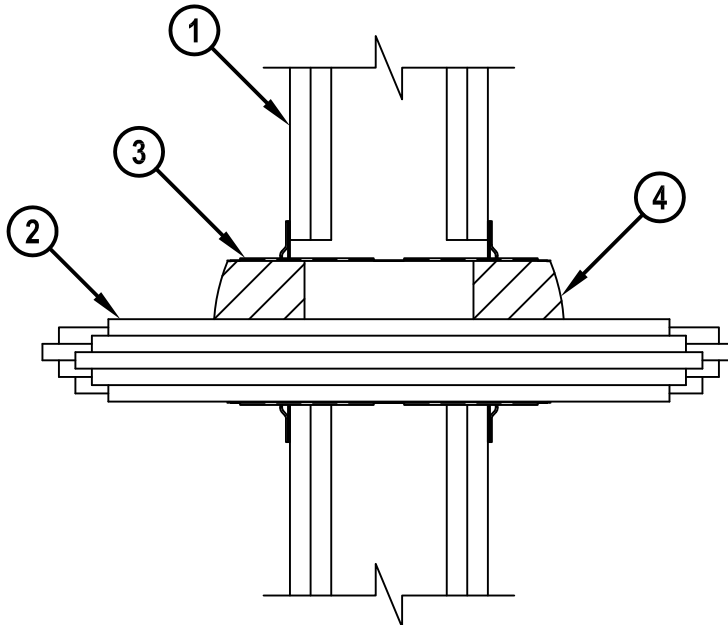
F-RATING = 1-HR. OR 2-HR.  
T-RATING = 0-HR., 3/4-HR., OR 1-HR.

WL3394c.112415

**FRONT VIEW**



**SECTION A-A**



HILTI, Inc.  
Plano, Texas USA (800) 879-8000

Sheet	1 of 2
Scale	11/64" = 1"
Date	Nov. 24, 2015

Drawing No.

**WL  
3394c**

*Saving Lives through Innovation and Education*

**CABLE BUNDLE THROUGH GYPSUM WALL ASSEMBLY**

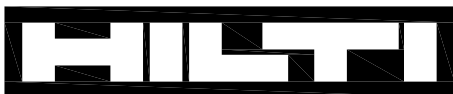
F-RATING = 1-HR. OR 2-HR.  
T-RATING = 0-HR., 3/4-HR., OR 1-HR.

WL3394c.112415

1. GYPSUM WALL ASSEMBLY (UL/cUL CLASSIFIED U300, U400, V400, OR W400 SERIES) (1-HR. OR 2-HR. FIRE-RATING) (2-HR. SHOWN) TO INCLUDE THE FOLLOWING CONSTRUCTION FEATURES :
  - A. [NOT SHOWN] WOOD STUDS TO CONSIST OF NOMINAL 2" x 4" LUMBER (SPACED MAXIMUM 16" OC). STEEL STUDS TO BE MINIMUM 3-1/2" WIDE (SPACED MAXIMUM 24" OC).
  - B. NOMINAL 5/8" THICK GYPSUM WALLBOARD. TYPE, NUMBER OF LAYERS, AND SHEET ORIENTATION AS SPECIFIED IN THE INDIVIDUAL UL DESIGN.
2. [OPTIONAL] CABLE BUNDLE TO BE A COMBINATION OF ANY OF THE FOLLOWING :
  - A. MAXIMUM 100 PAIR NO. 24 AWG TELEPHONE CABLE WITH PVC JACKET.
  - B. MAXIMUM 7/C NO. 12 AWG COPPER CONDUCTOR CONTROL CABLE WITH PVC OR XLPE JACKET AND INSULATION.
  - C. MAXIMUM 4/0 AWG TYPE RHH GROUND CABLE.
  - D. MAXIMUM 4 PAIR NO. 22 AWG CAT 5 OR 6 COMPUTER CABLE.
  - E. MAXIMUM RG 6/U COAXIAL CABLE.
  - F. MAXIMUM 1/2" DIAMETER FIBER-OPTIC CABLE (24 FIBER) WITH PVC OR PE JACKET AND INSULATION.
  - G. MAXIMUM 3/C NO. 12 AWG MC CABLE.
3. HILTI CFS-SL SK FIRESTOP SLEEVE (2" OR 4") CENTERED WITHIN WALL. DEVICE FLANGES SPUN CLOCKWISE ONTO DEVICE THREADS OVER SMOKE GASKET, BUTTING TIGHTLY TO BOTH SIDES OF WALL (SEE NOTES NO. 4 AND 5 BELOW).
4. HILTI CFS-PL FIRESTOP PLUG (2" OR 4") CUT TO FIT AROUND THE CABLE BUNDLE AND INSTALLED TIGHTLY WITHIN SLEEVE, FLUSH WITH THE END OF THE SLEEVE ON BOTH SIDES OF THE WALL.

	L-RATING, CFM (PER DEVICE)				L-RATING, CFM/SQ FT			
	AMBIENT		400°F		AMBIENT		400°F	
	SEALANT	GASKET	SEALANT	GASKET	SEALANT	GASKET	SEALANT	GASKET
BLANK OPENING (NO CABLES)	1.3	1.3	1.1	1.4	9.6	9.6	8.1	6.7
CABLES (MAX 33% FILL)	1.9	1.9	LESS THAN 1	1.2	13.6	13.6	10.3	8.9

- NOTES :**
1. MAXIMUM DIAMETER OF OPENING = 3" (FOR 2" DEVICE) AND 5" (FOR 4" DEVICE).
  2. CABLES MAY REPRESENT 0% TO 60% OF CROSS-SECTIONAL AREA OF DEVICE.
  3. ANNULAR SPACE BETWEEN DEVICE AND PERIPHERY OF OPENING = MINIMUM 0", MAXIMUM 1".
  4. AS AN ALTERNATE TO SMOKE GASKET, MINIMUM 5/8" DEPTH HILTI FS-ONE MAX OR FS-ONE INTUMESCENT FIRESTOP SEALANT FLUSH WITH BOTH SURFACES OF WALL PRIOR TO SPINNING ON DEVICE FLANGES.
  5. WHEN GASKETING MATERIAL IS USED, FLANGES MUST BE SECURED TO WALL WHEN OPENING DIAMETER EXCEEDS 4-1/2" (FOR THE 4" DEVICE) AND 2-1/2" (FOR THE 2" DEVICE), WITH MINIMUM TWO 1-1/2" LONG DRYWALL SCREWS EXCEPT THAT FOR BLANK DEVICES, MINIMUM FOUR SCREWS SHALL BE USED.



**Hilti Firestop Systems**

HILTI, Inc.  
Plano, Texas USA (800) 879-8000

Sheet	2 of 2
Scale	-
Date	Nov. 24, 2015

Drawing No.

**WL  
3394c**