

UL/cUL SYSTEM NO. W-L-4048

# CABLE RACK THROUGH GYPSUM WALL ASSEMBLY

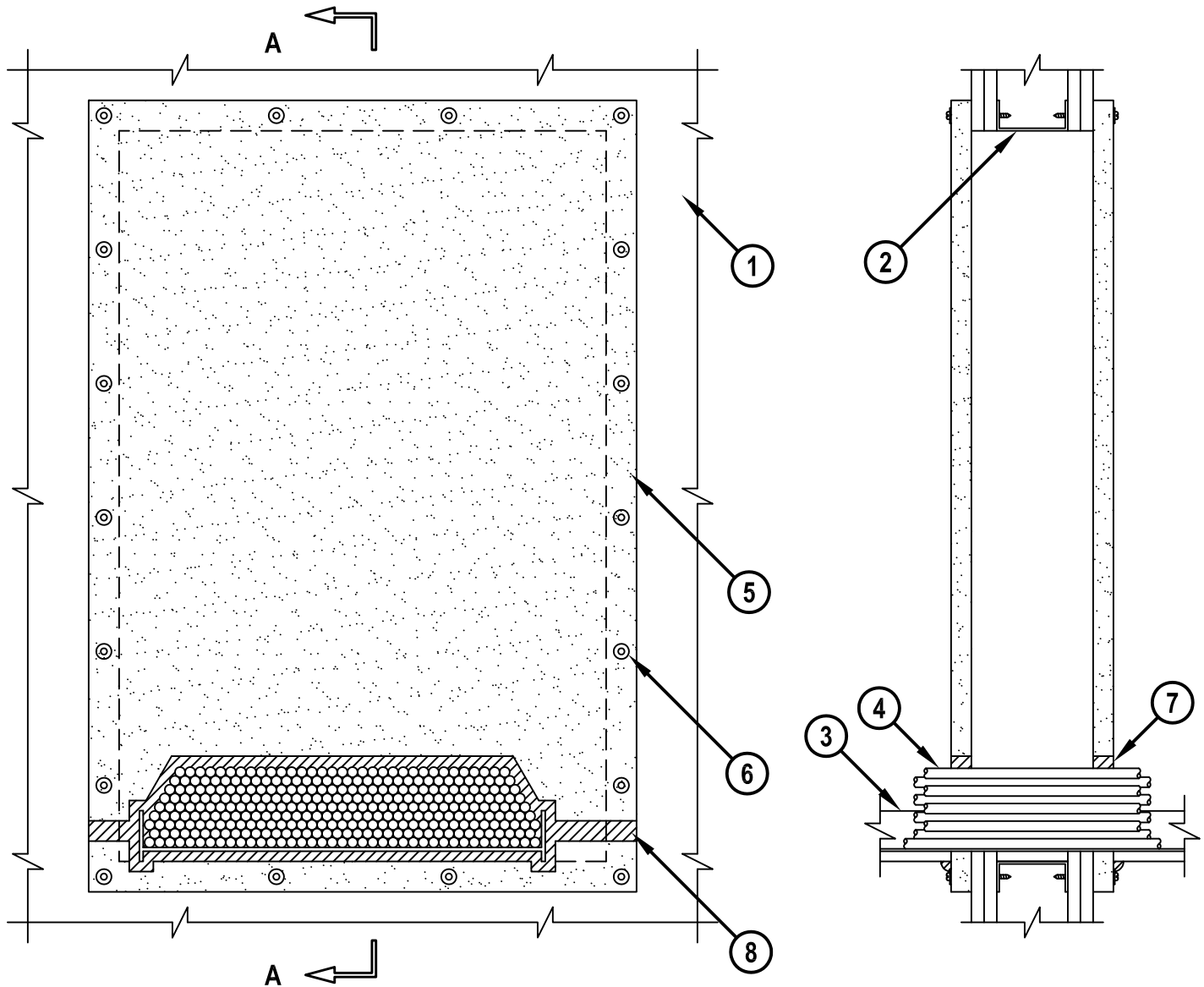
F-RATING = 1 OR 2-HR.

T-RATING = 1/4-HR.

WL4048c.011415

**FRONT VIEW**

**SECTION A-A**



HILTI, Inc.  
Tulsa, Oklahoma USA (800) 879-8000

Sheet	1 of 2
Scale	1/8" = 1"
Date	Jan. 14, 2015

Drawing No.  
**WL  
4048c**

*Saving Lives through Innovation and Education*

**CABLE RACK THROUGH GYPSUM WALL ASSEMBLY**

F-RATING = 1 OR 2-HR.

T-RATING = 1/4-HR.

WL4048c.011415

1. GYPSUM WALL ASSEMBLY (UL/cUL CLASSIFIED U400 OR V400 SERIES) (1-HR. OR 2-HR. FIRE-RATING) (2-HR. SHOWN).
2. [NOT SHOWN] STEEL STUDS TO BE MINIMUM 3-1/2" WIDE. OPENING TO BE COMPLETELY "FRAMED-OUT" WITH STUD MATERIAL.
3. MAXIMUM 20" x 2" STEEL CABLE RACK.
4. MAXIMUM 4" HIGH CABLE LOADING DEPTH TO CONSIST OF ANY OF THE FOLLOWING :
  - A. MAXIMUM 750 KCMIL TYPE RHW/RHH POWER CABLE OR WITH PVC JACKET.
  - B. MAXIMUM 3/C NO. 12 AWG METAL-CLAD CABLE.
  - C. MAXIMUM 300 PAIR NO. 24 AWG TELEPHONE CABLE WITH PVC JACKET.
  - D. MAXIMUM 24 FIBER, FIBER-OPTIC CABLE WITH PVC JACKET.
  - E. MAXIMUM 7/C NO. 12 AWG CABLE WITH PVC JACKET.
  - F. MAXIMUM 3/C NO. 2/0 AWG COPPER CONDUCTOR PVC JACKETED ALUMINUM CLAD OR STEEL CLAD TECK 90 CABLE.
  - G. ANY UL CLASSIFIED ARMORED OR METAL CLAD CABLE.
5. HILTI CP 675T FIRESTOP BOARD CUT TO OVERLAP OPENING MINIMUM 1" ON ALL SIDES. TWO PIECES POSITIONED AROUND CABLES/CABLE RACK WITH CUT EDGES TIGHTLY BUTTED.
6. FASTEN HILTI CP 675T FIRESTOP BOARD TO FRAMING MATERIAL UTILIZING 2-5/8" LONG STEEL SCREWS WITH 1-1/4" DIAMETER STEEL WASHERS AT EACH CORNER OF FIRESTOP BOARD AND MAXIMUM 8" C/C AROUND PERIMETER OF FIRESTOP BOARD ON BOTH SIDES OF WALL (SEE NOTE NO. 2).
7. MINIMUM 1" DEPTH HILTI FIRESTOP PUTTY APPLIED BETWEEN FIRESTOP BOARD AND CABLES/ CABLE RACK.
8. HILTI CP 619T FIRESTOP PUTTY ROLL TO BE CENTERED OVER SEAM ON BOTH SIDES OF WALL.

- NOTES :**
1. MAXIMUM SIZE OF OPENING = 24" x 36".
  2. BOTTOM PIECE OF HILTI CP 675T FIRESTOP BOARD CUT TO FOLLOW CONTOUR OF CABLE RACK WITH A MINIMUM 0" TO MAXIMUM 1" SPACE BETWEEN BOARD AND CABLE RACK. TOP PIECE CUT WITH A MINIMUM 1/8" TO MAXIMUM 1" SPACE BETWEEN BOARD AND CABLE RACK AND A MINIMUM 1/4" TO MAXIMUM 1" SPACE BETWEEN BOARD AND CABLES.
  3. ANNULAR SPACE BETWEEN CABLE RACK AND PERIPHERY OF OPENING = MINIMUM 0", MAXIMUM 34".
  4. APPLY MINIMUM 1/2" BEAD HILTI FIRESTOP PUTTY AT POINT OF CONTACT.
  5. PRIOR TO FASTENING HILTI CP 675T FIRESTOP BOARD TO WALL ASSEMBLY, APPLY A MINIMUM 1/8" WIDE BEAD OF HILTI FS-ONE MAX OR FS-ONE INTUMESCENT FIRESTOP SEALANT OR MINIMUM 1" WIDE CP 619T FIRESTOP PUTTY ROLL AROUND PERIMETER OF EACH BOARD.



HILTI, Inc.  
Tulsa, Oklahoma USA (800) 879-8000

Sheet	2 of 2
Scale	-
Date	Jan. 14, 2015

Drawing No.  
**WL  
4048c**