

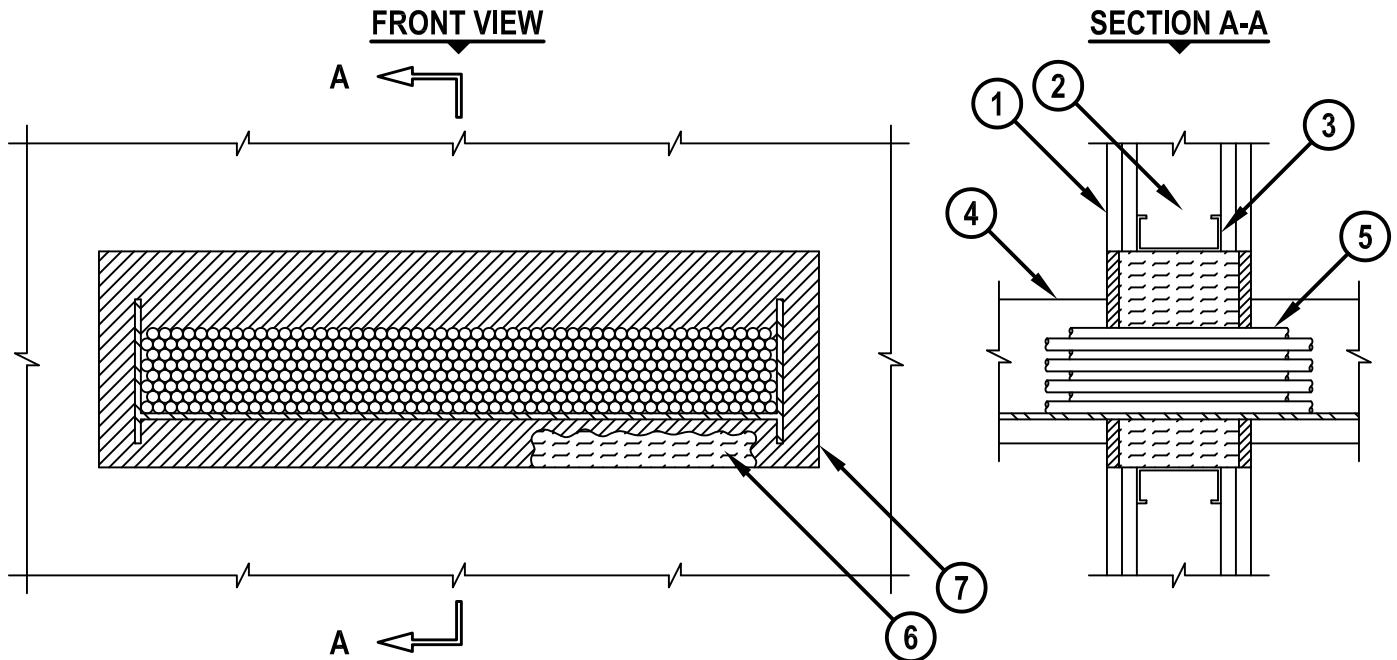
UL/cUL SYSTEM NO. W-L-4060

CABLE TRAY THROUGH GYPSUM WALL ASSEMBLY

F-RATING = 1-HR. OR 2-HR.

T-RATING = 1/2-HR.

WL4060b.011415



1. GYPSUM WALL ASSEMBLY (UL/cUL CLASSIFIED U300, U400, OR V400 SERIES) (1-HR. OR 2-HR. FIRE-RATING) (2-HR. SHOWN).
2. (NOT SHOWN). WOOD STUDS TO CONSIST OF NOMINAL 2" x 4" LUMBER. STEEL STUDS TO BE MINIMUM 3-1/2" WIDE.
3. OPENING TO BE "FRAMED-OUT" WITH ADDITIONAL FRAMING MEMBERS.
4. ALUMINUM OR STEEL OPEN LADDER CABLE TRAY (MAXIMUM SIZE : 24" x 6")
5. CABLES TO BE ANY COMBINATION OF THE FOLLOWING :
 - A. MAXIMUM 300 PAIR NO. 24 AWG TELEPHONE CABLE WITH PVC JACKET.
 - B. MAXIMUM 750 KCMIL SINGLE CONDUCTOR POWER CABLE WITH PVC JACKET.
 - C. MAXIMUM 1/2" DIAMETER FIBER-OPTIC CABLE (MAXIMUM 24 FIBER) WITH PVC JACKET.
 - D. MAXIMUM 3/C NO. 12 AWG METAL CLAD CABLE.
6. MINIMUM 3-3/4" OR 5" THICKNESS MINERAL WOOL (MINIMUM 4 PCF DENSITY) TIGHTLY PACKED FOR A 1-HR. OR 2-HR. FIRE-RATING, RESPECTIVELY.
7. MINIMUM 1/2" DEPTH HILTI FS-ONE MAX OR FS-ONE INTUMESCENT FIRESTOP SEALANT.

NOTES : 1. MAXIMUM SIZE OF OPENING TO BE ONE OF THE FOLLOWING :
A. 30" x 9" FOR STEEL STUD WALLS.
B. 14-1/2" x 9" FOR WOOD STUD WALLS.
2. ANNULAR SPACE = MINIMUM 0", MAXIMUM 3".
3. MAXIMUM AREA OF CABLES SHALL BE 40% OF CROSS-SECTIONAL AREA OF CABLE TRAY (APPROXIMATE 5" CABLE LOADING DEPTH).



HILTI, Inc.
Tulsa, Oklahoma USA (800) 879-8000

Sheet	1 of 1
Scale	1/8" = 1"
Date	Jan. 14, 2015

Drawing No.

**WL
4060b**

Saving Lives through Innovation and Education