

UL/cUL SYSTEM NO. W-L-5025

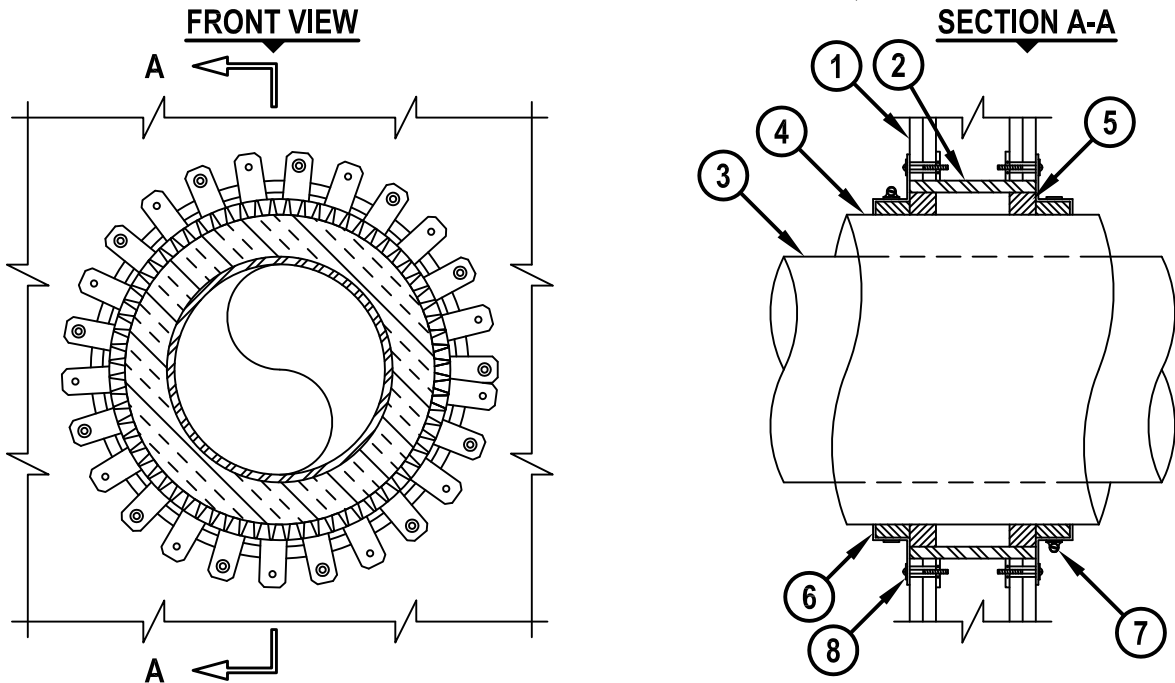
## INSULATED METAL PIPE THROUGH GYPSUM WALL ASSEMBLY

F-RATING = 1-HR. OR 2-HR.

T-RATING = 0-HR. OR 3/4-HR.

L RATING AT AMBIENT = 4 CFM / SQ FT

L RATING AT 400° = LESS THAN 1 CFM / SQ FT



1. GYPSUM WALL ASSEMBLY (UL/cUL CLASSIFIED U300 OR U400 SERIES) (1-HR. OR 2-HR. FIRE-RATING) (2-HR. SHOWN).
2. [OPTIONAL] MAXIMUM 18" NOMINAL DIAMETER STEEL PIPE SLEEVE (SCHEDULE 40 OR THINNER).
3. PENETRATING ITEM TO BE ONE OF THE FOLLOWING :
  - A. MAXIMUM 10" NOMINAL DIAMETER STEEL PIPE (SCHEDULE 10 OR HEAVIER).
  - B. MAXIMUM 4" NOMINAL DIAMETER COPPER PIPE.
  - C. MAXIMUM 4" NOMINAL DIAMETER STEEL CONDUIT OR EMT.
4. NOMINAL 2" THICK GLASS-FIBER INSULATION.
5. HILTI FS-ONE MAX OR FS-ONE INTUMESCENT FIRESTOP SEALANT :
  - A. MINIMUM 5/8" DEPTH OF SEALANT FOR A 1-HR. FIRE-RATING.
  - B. MINIMUM 1-1/4" DEPTH OF SEALANT FOR A 2-HR. FIRE-RATING.
6. HILTI RETAINING COLLAR, COMPLETELY FILLED WITH HILTI FS-ONE MAX OR FS-ONE INTUMESCENT FIRESTOP SEALANT.
7. NOMINAL 1/2" WIDE STAINLESS STEEL HOSE CLAMP(S) FASTENED AT MID-HEIGHT OF RETAINING COLLAR.
8. HILTI 1/4" TOGGLER BOLTS TO FASTEN EVERY OTHER TAB OF RETAINING COLLAR.

NOTES : 1. MAXIMUM DIAMETER OF OPENING :  
A. 18" FOR STEEL STUD WALLS.  
B. 14-1/2" FOR WOOD STUD WALLS.  
2. ANNULAR SPACE = 1-1/8".

**HILTI**  
Hilti Firestop Systems

HILTI, Inc.  
Tulsa, Oklahoma USA (800) 879-8000

Sheet 1 of 1  
Scale 7/64" = 1"  
Date Jan. 14, 2015

Drawing No.  
**WL**  
**5025h**

*Saving Lives through Innovation and Education*

WL5025h.011415