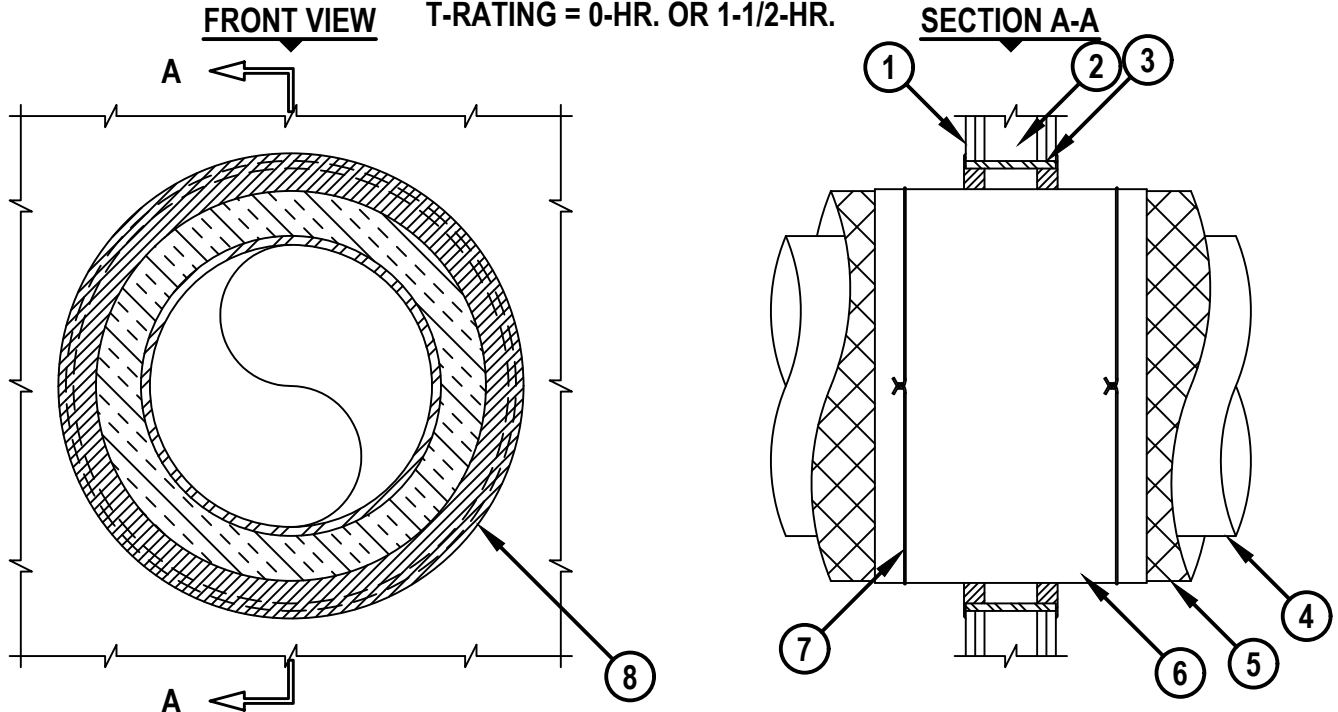


INSULATED METALLIC PIPE IN GYPSUM WALL ASSEMBLY

F-RATING = 1-HR. OR 2-HR.

T-RATING = 0-HR. OR 1-1/2-HR.



WL5047m.021317

1. GYPSUM WALL ASSEMBLY (UL CLASSIFIED U300 OR U400 SERIES) (1-HR. OR 2-HR. FIRE-RATING) (2-HR. SHOWN).
2. [NOT SHOWN] WOOD STUDS TO CONSIST OF NOMINAL 2" x 4" LUMBER. STEEL STUDS TO BE MINIMUM 2-1/2" WIDE.
3. [OPTIONAL] MAXIMUM 30" NOMINAL DIAMETER STEEL PIPE SLEEVE (SCHEDULE 40 OR THINNER).
4. PENETRATING ITEM TO BE ONE OF THE FOLLOWING :
 - A. MAXIMUM 20" DIAMETER STEEL PIPE (SCHEDULE 10 OR HEAVIER).
 - B. MAXIMUM 6" DIAMETER COPPER PIPE.
5. NOMINAL 1" TO 3" THICK GLASS-FIBER PIPE INSULATION.
6. NOMINAL 1" TO 3" THICK MINERAL FIBER PIPE INSULATION (SEE NOTE NO. 3 BELOW).
7. PIPE INSULATION SECURED WITH 18 AWG STEEL WIRE, 3" BEYOND EACH SURFACE OF WALL.
8. HILTI FS-ONE MAX OR FS-ONE INTUMESCENT FIRESTOP SEALANT :
 - A. MINIMUM 5/8" DEPTH OF SEALANT FOR A 1-HR. FIRE-RATING.
 - B. MINIMUM 1-1/4" DEPTH OF SEALANT FOR A 2-HR. FIRE-RATING.

NOTES :

1. MAXIMUM DIAMETER OF OPENING :
 - A. 30" FOR STEEL STUD WALLS.
 - B. 14-1/2" FOR WOOD STUD WALLS.
2. WHEN STEEL PIPE SLEEVE IS USED, ANNULAR SPACE = MINIMUM 1", MAXIMUM 2-1/4".
WHEN STEEL PIPE SLEEVE IS NOT USED, ANNULAR SPACE = MINIMUM 1/4", MAXIMUM 3".
3. OWENS CORNING MINERAL FIBER PIPE INSULATION TO EXTEND 6" OUT FROM EACH SIDE OF THE WALL. SECURE WITH TIE WIRE AS SHOWN. COVER WITH A UL CLASSIFIED ALL SERVICE JACKET AND PROPERLY JOIN WITH EXISTING INSULATION.



HILTI, Inc.
Plano, Texas USA (800) 879-8000

Sheet	1 of 1
Scale	5/64" = 1"
Date	Feb. 13, 2017

Drawing No.

**WL
5047m**