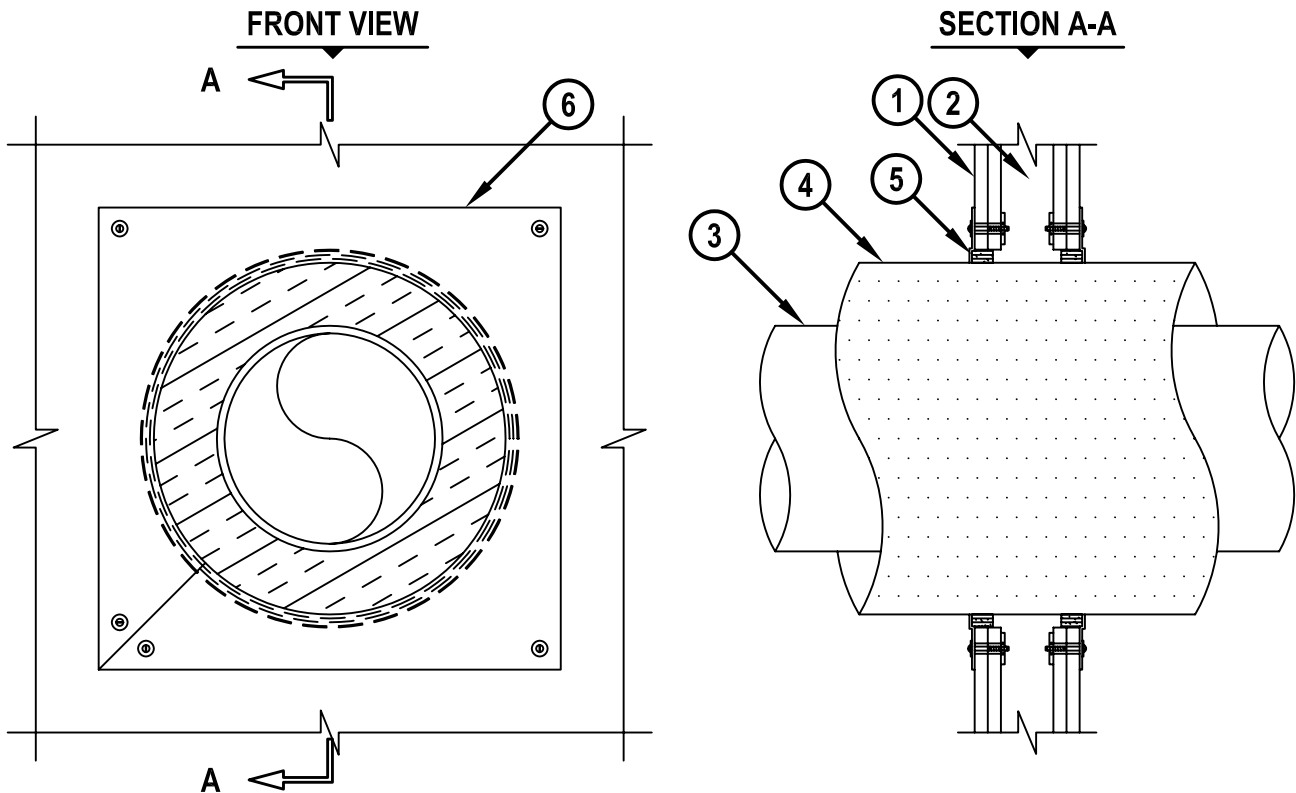


**INSULATED METAL PIPE THROUGH GYPSUM WALL ASSEMBLY**

F-RATING = 2-HR.

T-RATING = 0 AND 1-1/2-HR.

WL2125d.062105



1. GYPSUM WALL ASSEMBLY (UL/cUL CLASSIFIED U300 OR U400 SERIES) (2-HR. FIRE-RATING).
2. [NOT SHOWN] WOOD STUDS TO CONSIST OF NOMINAL 2" x 4" LUMBER. STEEL STUDS TO BE MINIMUM 2-1/2" WIDE.
3. PENETRATING ITEM TO BE ONE OF THE FOLLOWING :
  - A. MAXIMUM 10" NOMINAL DIAMETER STEEL PIPE (SCHEDULE 10 OR HEAVIER).
  - B. MAXIMUM 10" NOMINAL DIAMETER CAST OR DUCTILE IRON PIPE.
  - C. MAXIMUM 4" NOMINAL DIAMETER COPPER PIPE OR TUBING.
4. MAXIMUM 3" THICK GLASS-FIBER PIPE INSULATION.
5. HILTI CP 648E WRAP STRIP (NOMINAL 3/16" THICK x 1" WIDE) CONTINUOUSLY WRAPPED AROUND THE OUTER CIRCUMFERENCE OF THE PIPE INSULATION, COVERING THREE TIMES, WITH ENDS BUTTED AND HELD IN PLACE WITH TAPE. WRAP STRIP TO BE SLID INTO ANNULAR SPACE, SUCH THAT 1/8" OF THE WRAP STRIP PROTRUDES FROM THE WALL SURFACE.
6. SHEET METAL COVER PLATE (MIN. 25 GA.) ATTACHED TO GYPSUM WALL WITH 1/8" DIAMETER x 3" LONG TOGGLE BOLTS IN CONJUNCTION WITH 1-1/4" STEEL FENDER WASHERS (SEE NOTE NO. 3 BELOW).

**NOTES :** 1. MAXIMUM DIAMETER OF OPENING = 18".  
 2. ANNULAR SPACE = MINIMUM 1/2", MAXIMUM 3/4".  
 3. SHEET METAL COVER PLATE TO EXTEND A MINIMUM OF 2" BEYOND THE PERIPHERY OF THE OPENING.  
 4. WHEN PIPE INSULATION IS LESS THAN 3" THICK, T-RATING IS 0-HR.



HILTI, Inc.  
 Tulsa, Oklahoma USA (918) 252-6000

Sheet	1 of 1
Scale	7/64" = 1"
Date	June 21, 2005

Drawing No.  
**WL 5125d**