

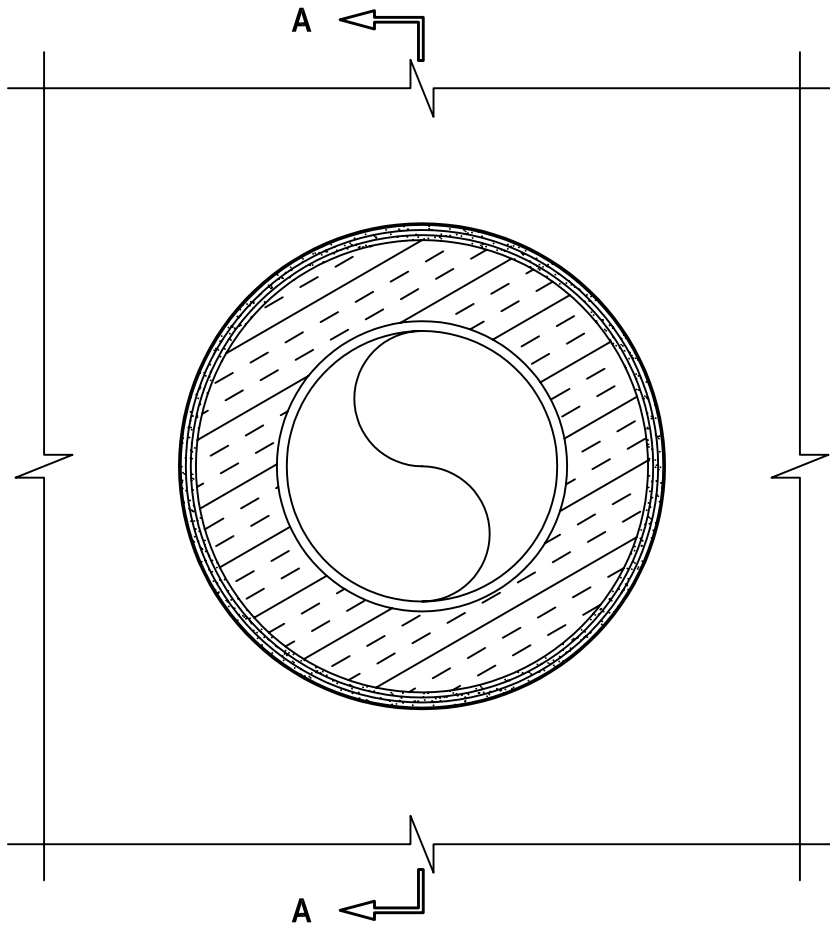
UL/cUL SYSTEM NO. W-L-5126

INSULATED METAL PIPE THROUGH GYPSUM WALL ASSEMBLY

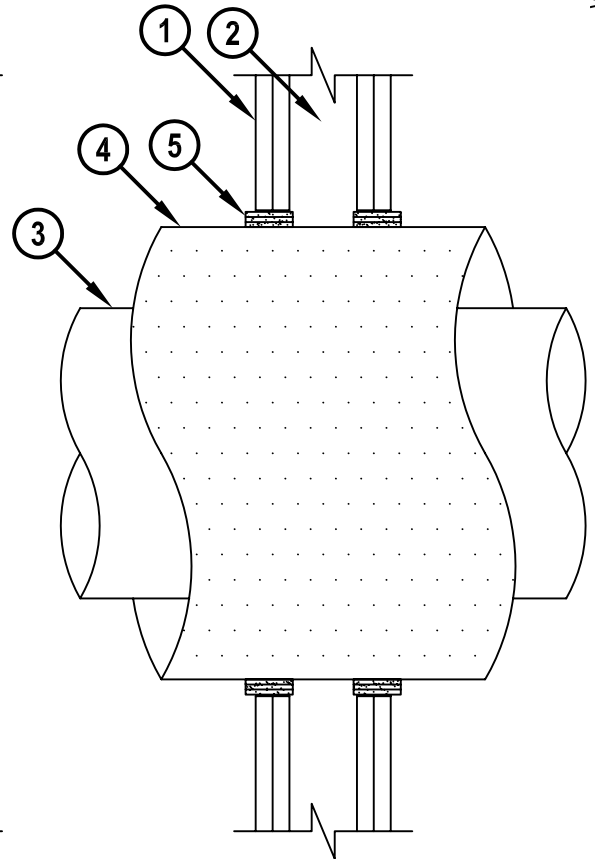
F-RATING = 2-HR.
T-RATING = 0 AND 1-HR.

WL5126c.062105

FRONT VIEW



SECTION A-A



1. GYPSUM WALL ASSEMBLY (UL/cUL CLASSIFIED U300 OR U400 SERIES) (2-HR. FIRE-RATING).
2. [NOT SHOWN] WOOD STUDS TO CONSIST OF NOMINAL 2" x 4" LUMBER. STEEL STUDS TO BE MINIMUM 2-1/2" WIDE.
3. MAXIMUM 10" NOMINAL DIAMETER STEEL PIPE (SCHEDULE 10 OR HEAVIER).
4. MAXIMUM 3" THICK GLASS-FIBER PIPE INSULATION.
5. HILTI CP 648E WRAP STRIP (NOMINAL 3/16" THICK x 1-3/4" WIDE) CONTINUOUSLY WRAPPED AROUND THE OUTER CIRCUMFERENCE OF THE PIPE INSULATION, COVERING THREE TIMES, WITH ENDS BUTTED AND HELD IN PLACE WITH TAPE. WRAP STRIP TO BE SLID INTO ANNULAR SPACE, SUCH THAT 3/8" OF THE WRAP STRIP PROTRUDES FROM THE WALL SURFACE.

NOTES : 1. MAXIMUM DIAMETER OF OPENING = 18".
2. ANNULAR SPACE = MINIMUM 1/2", MAXIMUM 3/4".
3. WHEN PIPE INSULATION IS LESS THAN 3" THICK, T-RATING IS 0-HR.

HILTI[®]
FIRESTOP SYSTEMS

HILTI, Inc.
Tulsa, Oklahoma USA (918) 252-6000

Sheet 1 of 1
Scale 1/8" = 1"
Date June 21, 2005

Drawing No.
WL
5126c

Saving Lives through Innovation and Education