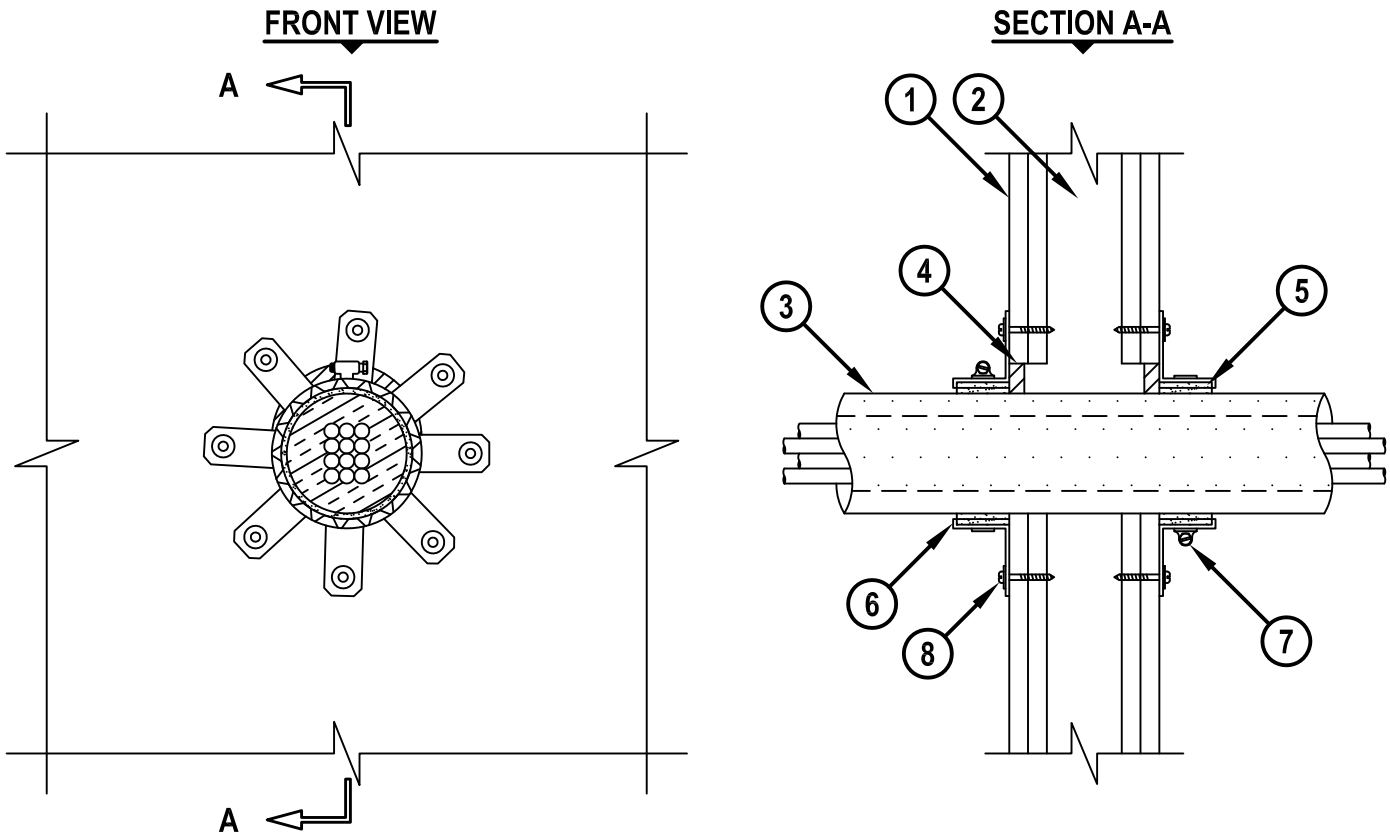


INSULATED BEVERAGE SERVICE LINES THROUGH GYPSUM WALL ASSEMBLY

F-RATING = 1-HR. OR 2-HR.
T-RATING = 0-HR. OR 1-3/4-HR.

WL5224c.011415



1. GYPSUM WALL ASSEMBLY (UL CLASSIFIED U300, U400, OR V400 SERIES) (1-HR. OR 2-HR. FIRE-RATING) (2-HR. SHOWN).
2. [NOT SHOWN] WOOD STUDS TO CONSIST OF NOMINAL 2" x 4" LUMBER. STEEL STUDS TO BE MINIMUM 2-1/2" WIDE.
3. MAXIMUM 4" DIAMETER INSULATED BEVERAGE LINE CONSISTING OF THE FOLLOWING :
 - A. NOMINAL 1/2" DIAMETER PE OR PEX TUBING (CLOSED PIPING SYSTEM) (MAX. QTY. = 12).
 - B. MAXIMUM 3/4" THICK AB/PVC PIPE INSULATION.
4. MINIMUM 1/2" DEPTH HILTI FS-ONE MAX OR FS-ONE INTUMESCENT FIRESTOP SEALANT.
5. HILTI CP 648E WRAP STRIP (NOMINAL 3/16" THICK x 1-3/4" WIDE) CONTINUOUSLY WRAPPED AROUND THE OUTER CIRCUMFERENCE OF BUNDLE, COVERING TWO TIMES, AND HELD IN PLACE WITH TAPE.
6. HILTI RETAINING COLLAR WRAPPED OVER WRAP STRIP, OVERLAPPING MINIMUM 1".
7. NOMINAL 1/2" WIDE STAINLESS STEEL HOSE CLAMP FASTENED AT MID-HEIGHT OF RETAINING COLLAR.
8. EVERY TAB OF RETAINING COLLAR SECURED TO WALL WITH NO. 10 x 1-1/2" LONG STEEL LAMINATE SCREWS IN CONJUNCTION WITH 3/4" DIAMETER FENDER WASHERS.

NOTES : 1. MAXIMUM DIAMETER OF OPENING = 5".
2. ANNULAR SPACE = MINIMUM 0", MAXIMUM 1".



HILTI, Inc.
Tulsa, Oklahoma USA (800) 879-8000

Sheet	1 of 1
Scale	5/32" = 1"
Date	Jan. 14, 2015

Drawing No.
WL 5224c