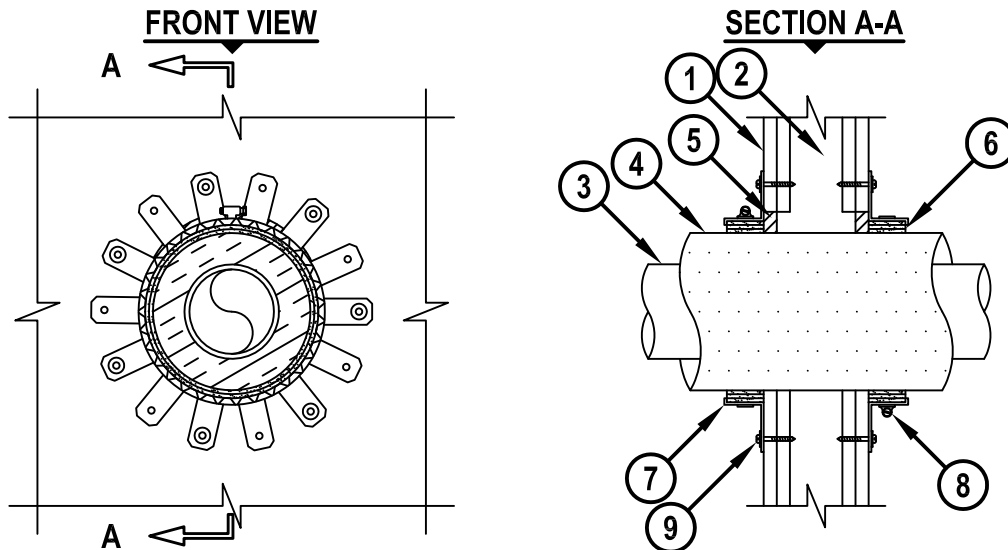


UL SYSTEM NO. W-L-5225

INSULATED PLASTIC PIPE THROUGH GYPSUM WALL ASSEMBLY

F-RATING = 1-HR. OR 2-HR.

T-RATING = 0-HR., 1-HR., 1 1/2-HR., OR 2-HR.



WL5225f.011415

1. GYPSUM WALL ASSEMBLY (UL CLASSIFIED U300, U400, OR V400 SERIES) (1-HR. OR 2-HR. FIRE-RATING) (2-HR. SHOWN).
2. [NOT SHOWN] WOOD STUDS TO CONSIST OF NOMINAL 2" x 4" LUMBER. STEEL STUDS TO BE MINIMUM 2-1/2" WIDE.
3. PENETRATING ITEM TO BE ONE OF THE FOLLOWING :
 - A. MAXIMUM 4" NOMINAL DIAMETER PVC PLASTIC PIPE (SCHEDULE 40) (CELLULAR OR SOLID CORE) (CLOSED OR VENTED PIPING SYSTEM).
 - B. MAXIMUM 4" NOMINAL DIAMETER CPVC PLASTIC PIPE (SDR 13.5) (CLOSED PIPING SYSTEM ONLY).
4. PIPES MAY BE INSULATED WITH NOMINAL 1-1/2" THICK GLASS-FIBER PIPE INSULATION OR 2" AND SMALLER PIPES MAY BE INSULATED WITH MAXIMUM 1" THICK AB/PVC PIPE INSULATION.
5. MINIMUM 5/8" DEPTH HILTI FS-ONE MAX OR FS-ONE INTUMESCENT FIRESTOP SEALANT.
6. HILTI CP 648E FIRESTOP WRAP STRIPS (NOMINAL 3/16" THICK x 1-3/4" WIDE) CONTINUOUSLY WRAPPED AROUND THE OUTER CIRCUMFERENCE OF THE PIPE, AS SPECIFIED IN TABLE BELOW, WITH ENDS BUTTED AND HELD IN PLACE WITH TAPE.
7. HILTI RETAINING COLLAR WRAPPED OVER WRAP STRIP, OVERLAPPING MINIMUM 1".
8. NOMINAL 1/2" WIDE STAINLESS STEEL HOSE CLAMP FASTENED AT MID-HEIGHT OF RETAINING COLLAR.
9. EVERY TAB OF RETAINING COLLAR SECURED TO WALL WITH NO. 1-1/4" LONG STEEL LAMINATE SCREWS IN CONJUNCTION WITH 1-1/4" DIAMETER FENDER WASHERS.

NOMINAL PIPE DIAMETER	NO. OF LAYERS OF CP 648E
2" (OR SMALLER)	1
4" (OR SMALLER)	3

NOTES : 1. MAXIMUM DIAMETER OF OPENING = 8-1/2".
 2. ANNULAR SPACE [GLASS-FIBER INSULATED PIPES] = MINIMUM 0", MAXIMUM 1".
 3. ANNULAR SPACE [AB/PVC INSULATED PIPES] = MINIMUM 1/8", MAXIMUM 1/4".



HILTI, Inc.
 Tulsa, Oklahoma USA (800) 879-8000

Sheet	1 of 1
Scale	7/64" = 1"
Date	Jan. 14, 2015

Drawing No.
WL 5225f

Saving Lives through Innovation and Education