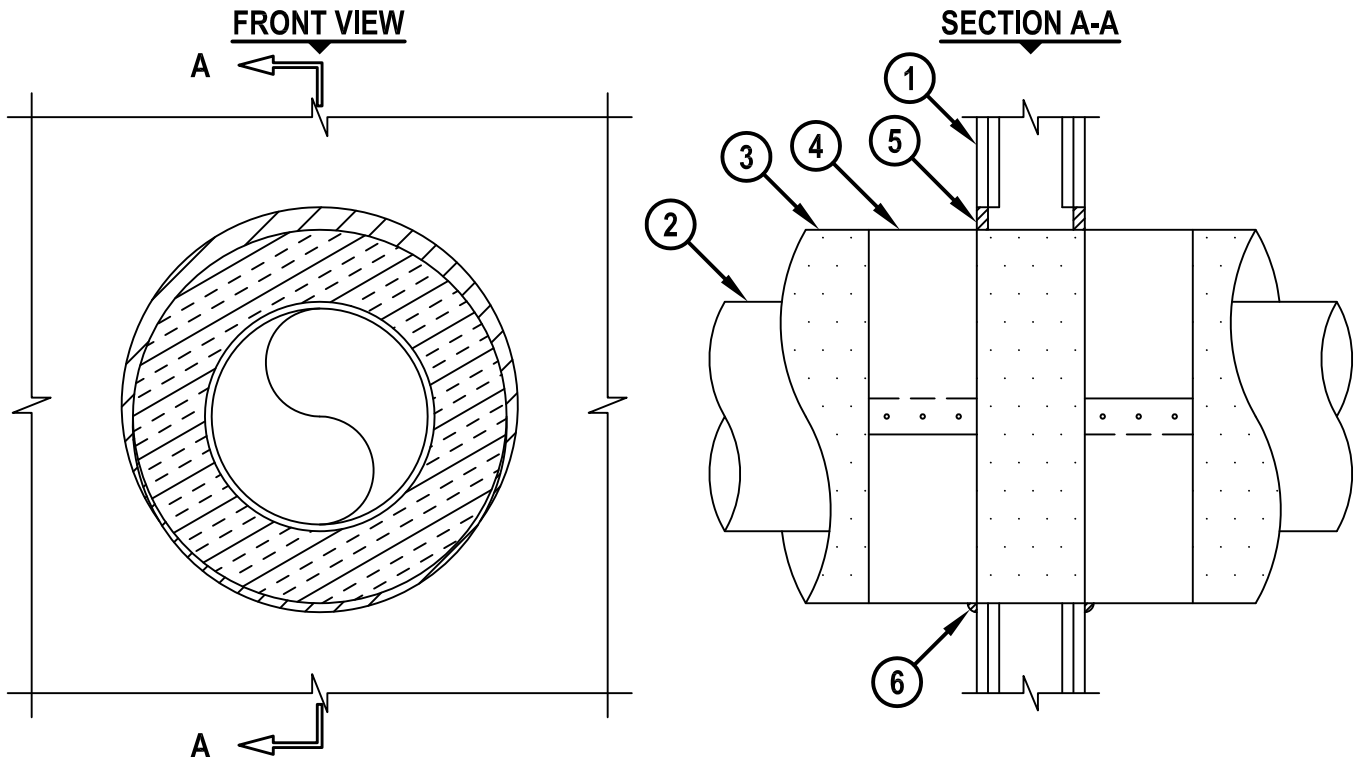


INSULATED METAL PIPE THROUGH GYPSUM WALL ASSEMBLY

F-RATING = 1-HR. OR 2-HR.

T-RATING = 1-HR. OR 2-HR.

WL5292b.011415



1. GYPSUM WALL ASSEMBLY (UL/cUL CLASSIFIED U300 OR U400 SERIES) (1-HR. OR 2-HR. FIRE-RATING) (2-HR. SHOWN) TO INCLUDE THE FOLLOWING CONSTRUCTION FEATURES :
 - A. [NOT SHOWN] WOOD STUDS TO CONSIST OF NOMINAL 2" x 4" LUMBER (SPACED MAXIMUM 16" OC). STEEL STUDS TO BE MINIMUM 3-5/8" WIDE (SPACED MAXIMUM 24" OC).
 - B. NOMINAL 5/8" THICK GYPSUM WALLBOARD. TYPE, NUMBER OF LAYERS, AND SHEET ORIENTATION AS SPECIFIED IN THE INDIVIDUAL UL DESIGN.
2. PENETRATING ITEM TO BE ONE OF THE FOLLOWING :
 - A. MAXIMUM 12" NOMINAL DIAMETER STEEL PIPE (SCH 40 OR HEAVIER).
 - B. MAXIMUM 12" NOMINAL DIAMETER CAST OR DUCTILE IRON PIPE.
3. MAXIMUM 4" THICK CALCIUM SILICATE PIPE INSULATION.
4. MINIMUM 6" LONG JACKET FORMED OF STEEL SHEET (MIN. 0.010" THICK) SECURED WITH THREE NO. 8 SHEET METAL SCREWS OR STEEL BANDING CLAMPS. JACKET TO BE INSTALLED ABUTTING SURFACE OF SEALANT ON BOTH SIDES OF WALL.
5. MINIMUM 5/8" DEPTH HILTI FS-ONE MAX OR FS-ONE INTUMESCENT FIRESTOP SEALANT.
6. MINIMUM 1/2" BEAD HILTI FS-ONE MAX OR FS-ONE INTUMESCENT FIRESTOP SEALANT APPLIED AT POINT OF CONTACT.

NOTES : 1. MAXIMUM DIAMETER OF OPENING = 22-1/2".
 2. ANNULAR SPACE = MINIMUM 0", MAXIMUM 1-1/4".
 3. PIPE INSULATION TO BE SECURED TO PIPE WITH METAL BANDS AS PER MANUFACTURER'S INSTALLATION INSTRUCTIONS.



HILTI, Inc.
 Tulsa, Oklahoma USA (800) 879-8000

Sheet	1 of 1
Scale	3/32" = 1"
Date	Jan. 14, 2015

Drawing No.
WL 5292b