

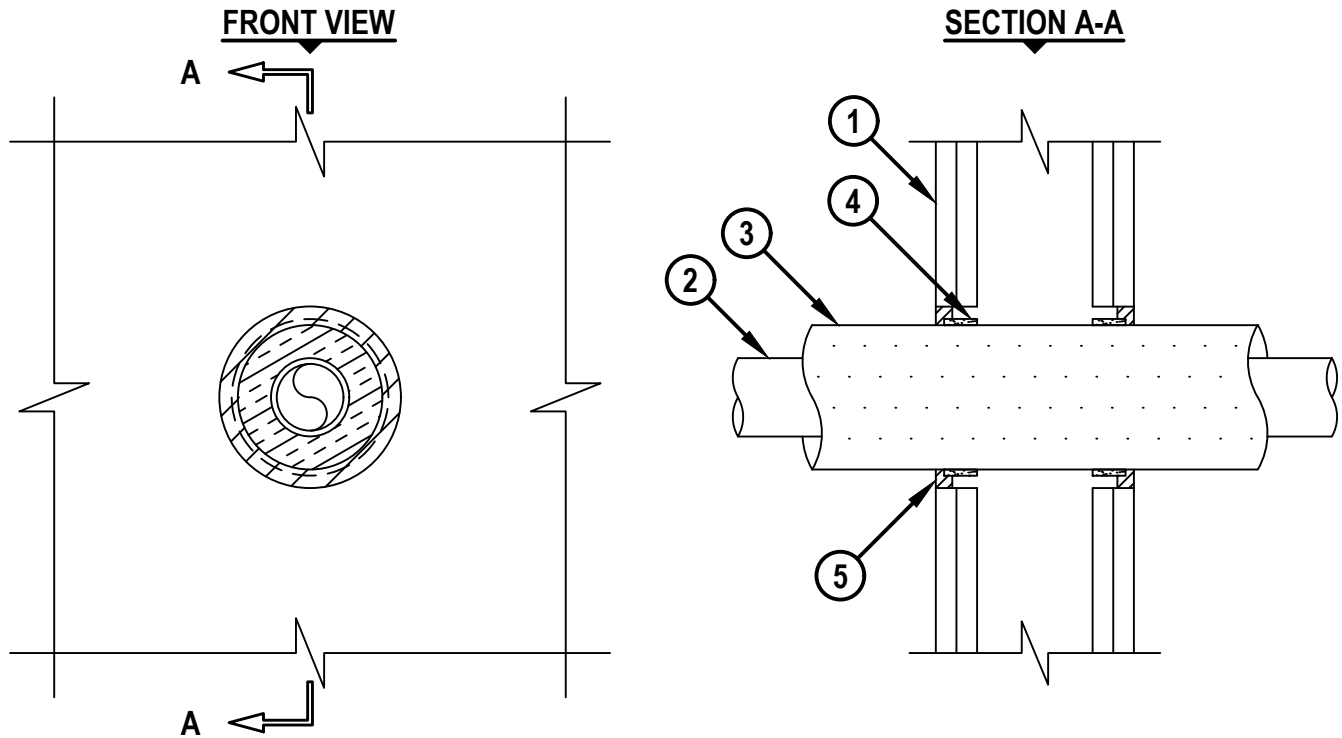
UL SYSTEM NO. W-L-5294

# INSULATED PLASTIC PIPE THROUGH GYPSUM WALL ASSEMBLY

F-RATING = 1-HR. OR 2-HR.

T-RATING = 1-HR., 1 3/4-HR., OR 2-HR.

WL5249c.020519



1. GYPSUM WALL ASSEMBLY (UL CLASSIFIED U300, U400 OR V400 SERIES) (1-HR. OR 2-HR. FIRE-RATING) (2-HR. SHOWN) TO INCLUDE THE FOLLOWING CONSTRUCTION FEATURES :
  - A. [NOT SHOWN] WOOD STUDS TO CONSIST OF NOMINAL 2" x 4" LUMBER (SPACED MAXIMUM 16" OC). STEEL STUDS TO BE MINIMUM 3-1/2" WIDE (SPACED MAXIMUM 24" OC).
  - B. NOMINAL 5/8" THICK GYPSUM WALLBOARD. TYPE, NUMBER OF LAYERS, AND SHEET ORIENTATION AS SPECIFIED IN THE INDIVIDUAL UL DESIGN.
2. MAXIMUM 2" NOMINAL DIAMETER CPVC PLASTIC PIPE (SDR 11 OR SDR 13.5) (CLOSED PIPING SYSTEM).
3. PIPE TO BE INSULATED WITH ONE OF THE FOLLOWING :
  - A. NOMINAL 1" THICK GLASS-FIBER PIPE INSULATION.
  - B. NOMINAL 1" THICK AB/PVC PIPE INSULATION.
4. HILTI CP 648E WRAP STRIP (NOMINAL 3/16" THICK x 1" WIDE) CONTINUOUSLY WRAPPED AROUND THE OUTER CIRCUMFERENCE OF THE PIPE, COVERING ONE TIME, WITH ENDS BUTTED AND HELD IN PLACE WITH TAPE. WRAP STRIP TO BE INSERTED INTO ANNULAR SPACE AND RECESSED 1/4" FROM WALL SURFACES.
5. MINIMUM 1/2" DEPTH HILTI FS-ONE MAX INTUMESCENT FIRESTOP SEALANT FLUSH WITH BOTH SURFACES OF WALL. FS-ONE MAX TO BE NOMINAL 1/4" DEPTH AT AREA WHERE WRAP STRIP IS INSTALLED.

NOTES : 1. MAXIMUM DIAMETER OF OPENING = 5-1/2".  
2. ANNULAR SPACE = MINIMUM 3/16", MAXIMUM 15/16".

**HILTI**  
Hilti Firestop Systems

HILTI, Inc.  
Plano, Texas USA (800) 879-8000

Sheet 1 of 1  
Scale 11/64" = 1"  
Date Feb. 05, 2019

Drawing No.

**WL  
5294c**

*Saving Lives through Innovation and Education*