

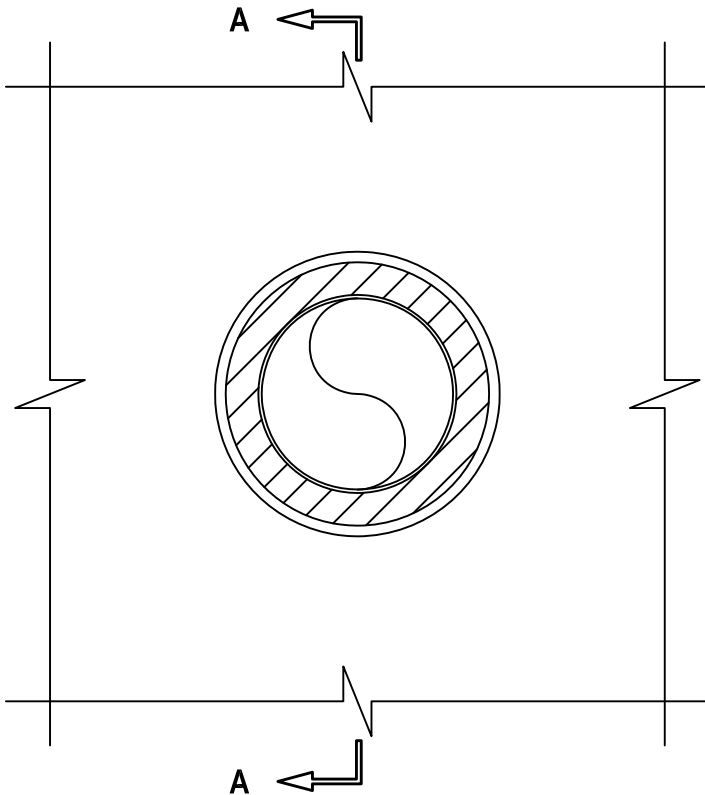
**METAL DUCT (WITHOUT DAMPER) THROUGH GYPSUM WALL ASSEMBLY**

F-RATING = 1-HR.

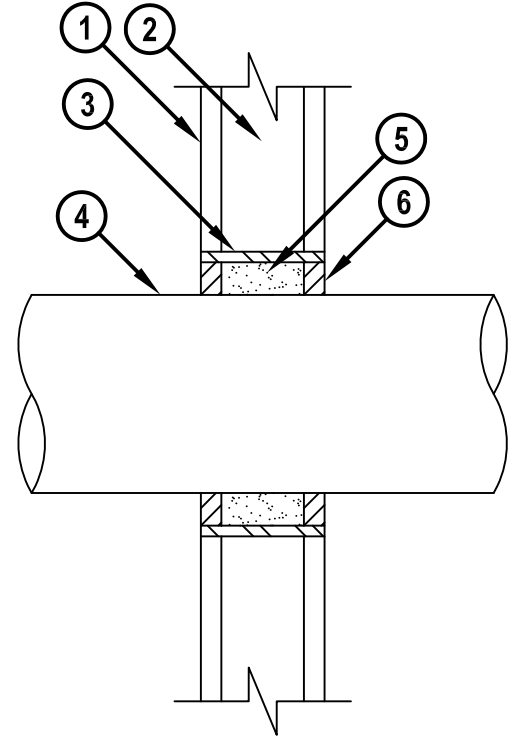
T-RATING = 0-HR.

WL7017e.011415

**FRONT VIEW**



**SECTION A-A**



1. GYPSUM WALL ASSEMBLY (UL/cUL CLASSIFIED U300 OR U400 SERIES) (1-HR. FIRE-RATING).
2. [NOT SHOWN] WOOD STUDS TO CONSIST OF NOMINAL 2" x 4" LUMBER. STEEL STUDS TO BE MINIMUM 2-1/2" WIDE.
3. MAXIMUM 8" NOMINAL DIAMETER STEEL PIPE SLEEVE (SCHEDULE 40 OR HEAVIER).
4. MAXIMUM 6" DIAMETER SHEET METAL DUCT (MINIMUM 28 GAUGE).
5. HILTI CF-AS CJP OR CF 812 FILLER FOAM RECESSED TO ACCOMMODATE FIRESTOP SEALANT.
6. MINIMUM 5/8" DEPTH HILTI FS-ONE MAX OR FS-ONE INTUMESCENT FIRESTOP SEALANT.

**NOTES :** 1. MAXIMUM DIAMETER OF OPENING = 8-5/8".  
 2. ANNULAR SPACE = MINIMUM 1/2", MAXIMUM 1-1/2".



HILTI, Inc.  
 Tulsa, Oklahoma USA (800) 879-8000

Sheet	1 of 1
Scale	11/64" = 1"
Date	Jan. 14, 2015

Drawing No.  
**WL  
 7017e**