

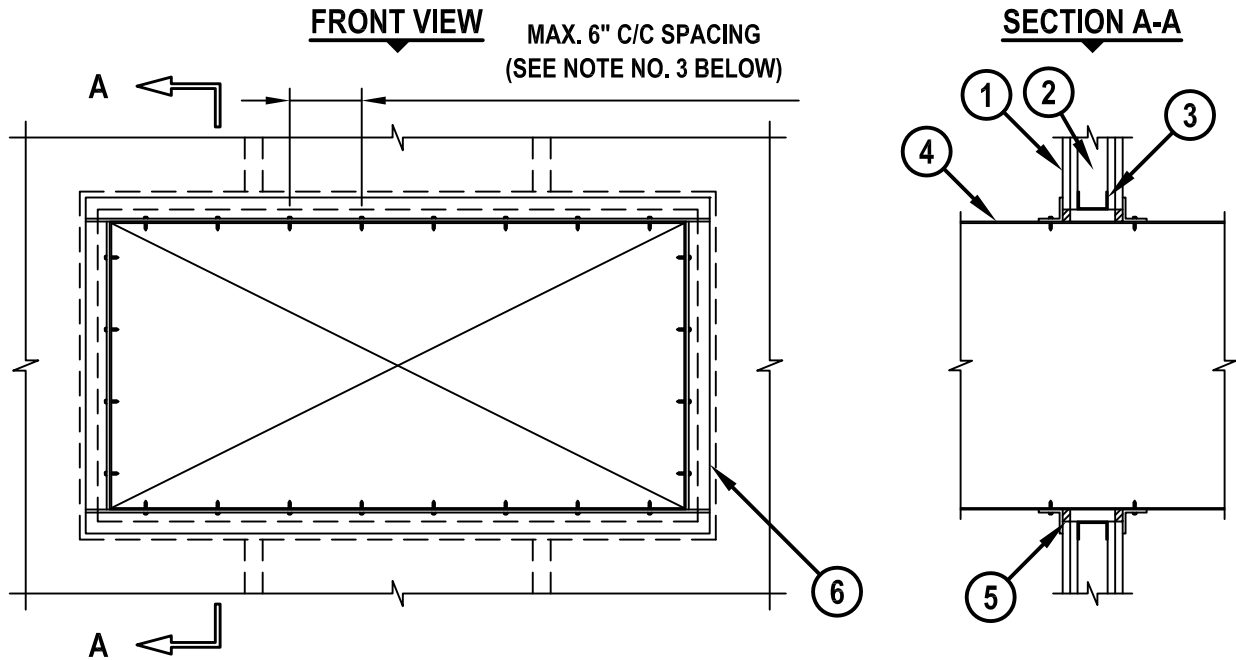
METAL DUCT (WITHOUT DAMPER) THROUGH GYPSUM WALL ASSEMBLY

F-RATING = 1-HR. OR 2-HR.

T-RATING = 0-HR.

L-RATING AT AMBIENT = LESS THAN 1 CFM / SQ FT

L-RATING AT 400°F = LESS THAN 1 CFM / SQ FT



WL7040k.041316

1. GYPSUM WALL ASSEMBLY (UL/cUL CLASSIFIED U300 OR U400 SERIES WALL) (1-HR. OR 2-HR. FIRE-RATING) (2-HR. SHOWN).
2. [NOT SHOWN] WOOD STUDS TO CONSIST OF NOMINAL 2" x 4" LUMBER. STEEL STUDS TO BE MINIMUM 2-1/2" WIDE.
3. OPENING TO BE "FRAMED OUT" WITH LIGHTGAGE METAL FRAMING STUDS.
4. MAXIMUM 48" x 24" RECTANGULAR SHEET METAL DUCT (MIN. 24 GA.).
(NOTE : NOT FOR USE IN DUCT SYSTEMS CONTAINING A FIRE DAMPER)
5. MINIMUM 5/8" DEPTH HILTI FS-ONE MAX INTUMESCENT FIRESTOP SEALANT OR HILTI CP 606 FLEXIBLE FIRESTOP SEALANT.
6. [NOT SHOWN] APPLY MINIMUM 1/2" BEAD HILTI FS-ONE MAX INTUMESCENT FIRESTOP SEALANT OR HILTI CP 606 FLEXIBLE FIRESTOP SEALANT AT POINT OF CONTACT PRIOR TO ATTACHING STEEL ANGLE.

NOTES : 1. MAXIMUM AREA OF OPENING = 1300 SQ. IN., WITH A MAXIMUM DIMENSION OF 50".
 2. ANNULAR SPACE = MINIMUM 0", MAXIMUM 2".
 3. AFTER SEALING SPACE BETWEEN DUCT AND GYPSUM WALL ASSEMBLY WITH HILTI FIRESTOP SEALANT, FASTEN STEEL ANGLE (MIN. 18 GA.) TO DUCT WITH MINIMUM NO. 8 x 3/4" LONG SHEET METAL SCREWS. STEEL ANGLE TO OVERLAP DUCT BY MINIMUM 2" AND GYPSUM WALL ASSEMBLY BY MINIMUM 1". ANGLE DOES NOT HAVE TO BE FASTENED TO GYPSUM WALL ASSEMBLY. WHEN DUCT IS AT POINT OF CONTACT, ANGLES TO BE INSTALLED PRIOR TO FULL MATERIAL CURING.



HILTI, Inc.
 Plano, Texas USA (800) 879-8000

Sheet	1 of 1
Scale	1/16" = 1"
Date	Apr. 13, 2016

Drawing No.
WL 7040k