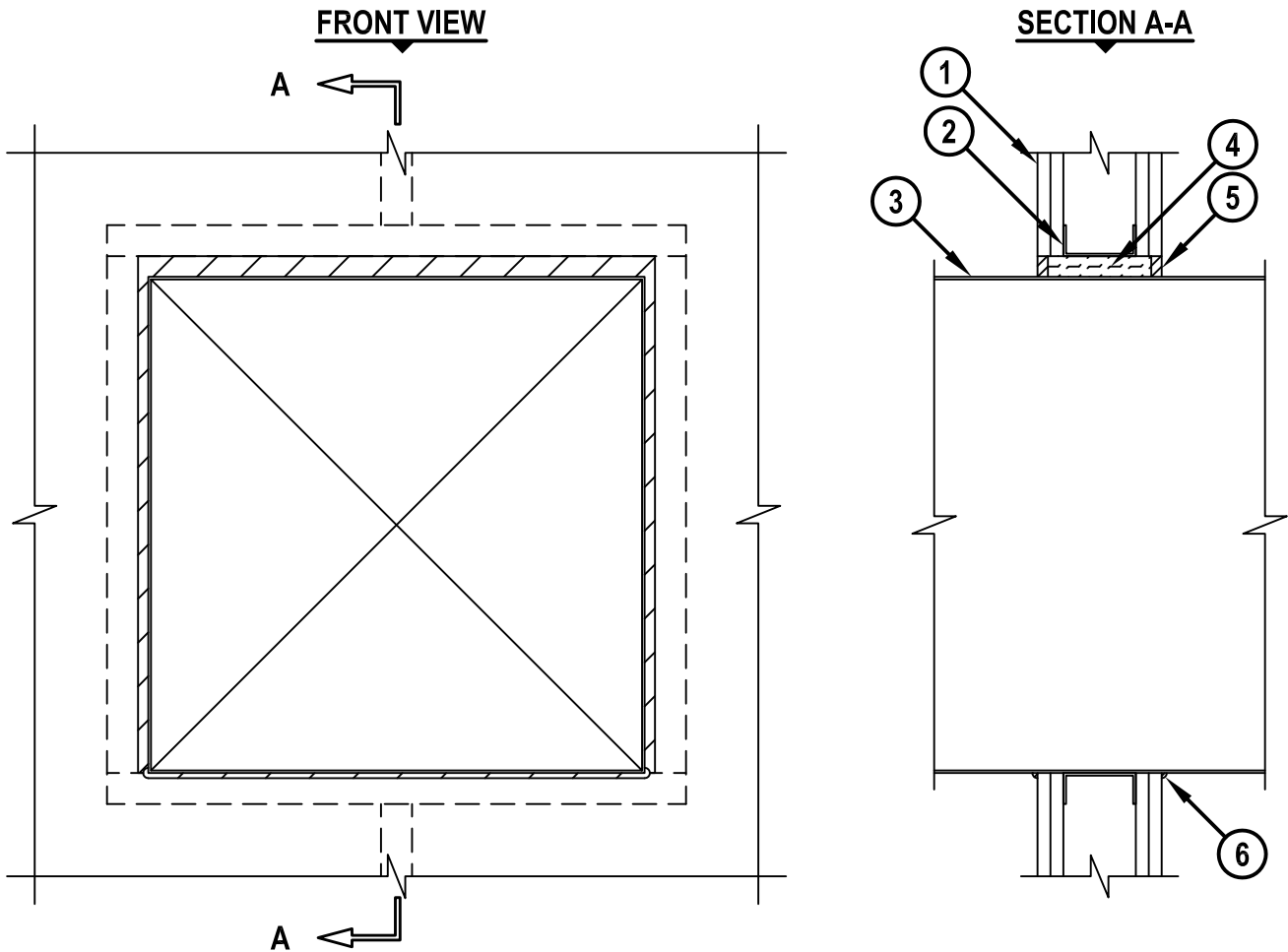


SHEET METAL DUCT (WITHOUT DAMPER) THROUGH GYPSUM WALL ASSEMBLY

F-RATING = 1-HR. OR 2-HR.
T-RATING = 0-HR. OR 1/2-HR.

WL7143c.010413



1. GYPSUM WALL ASSEMBLY (UL/cUL CLASSIFIED U400 SERIES) (1-HR. OR 2-HR. FIRE-RATING) (2-HR. SHOWN).
2. STEEL STUDS TO BE MINIMUM 3-1/2" WIDE. OPENING TO BE COMPLETELY "FRAMED OUT".
3. MAXIMUM 24" x 24" RECTANGULAR SHEET METAL DUCT (MIN. 24 GA.).
(NOT FOR USE IN DUCT SYSTEMS CONTAINING A FIRE DAMPER.)
4. MINIMUM 3-3/4" OR 5" THICKNESS MINERAL WOOL (MIN. 4 PCF DENSITY) TIGHTLY PACKED INTO OPENING FOR 1-HR. OR 2-HR. FIRE-RATED WALLS, RESPECTIVELY.
5. MINIMUM 1/2" DEPTH HILTI CP 606 FLEXIBLE FIRESTOP SEALANT.
6. MINIMUM 1/4" BEAD HILTI CP 606 FLEXIBLE FIRESTOP SEALANT APPLIED AT POINT OF CONTACT (SEE NOTE NO. 3 BELOW).

NOTES : 1. MAXIMUM SIZE OF OPENING = 25" x 25".
2. ANNULAR SPACE = MINIMUM 1/2", MAXIMUM 1".
3. FOR 2-HR. FIRE-RATED WALLS ONLY, SHEET METAL DUCT MAY HAVE MINIMUM 0" ANNULAR SPACE.



HILTI, Inc.
Tulsa, Oklahoma USA (800) 879-8000

| | |
|-------|---------------|
| Sheet | 1 of 1 |
| Scale | 7/64" = 1" |
| Date | Jan. 04, 2013 |

Drawing No.

**WL
7143c**