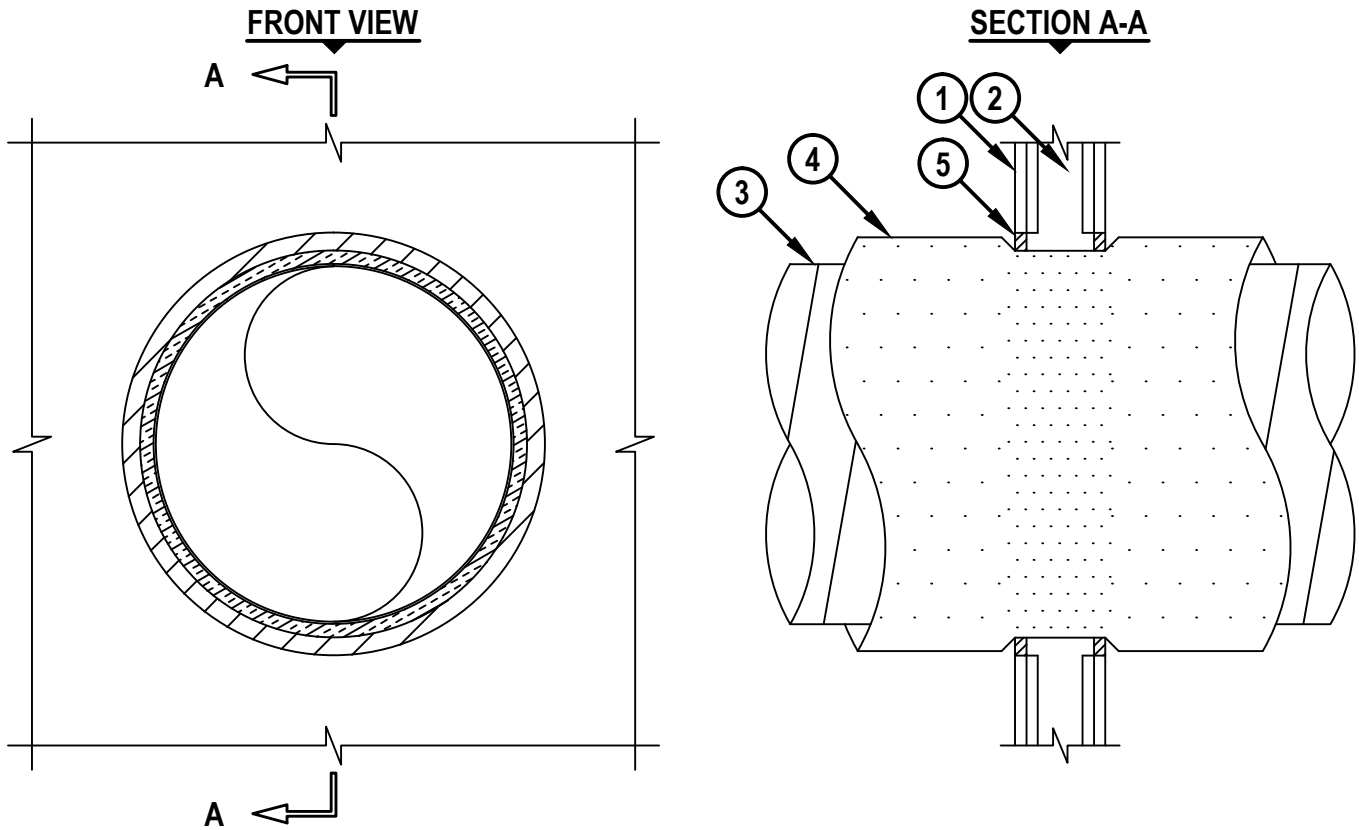


INSULATED DUCT THROUGH GYPSUM WALL ASSEMBLY

F-RATING = 1-HR. OR 2-HR.

T-RATING = 1/2-HR.

WL7153c.020218



1. GYPSUM WALL ASSEMBLY (UL/cUL CLASSIFIED U400 OR V400 SERIES) (1-HR. OR 2-HR. FIRE-RATING) (2-HR. SHOWN).
2. [NOT SHOWN] STEEL STUDS TO BE MINIMUM 2-1/2" WIDE.
3. PENETRATING ITEM TO BE ONE OF THE FOLLOWING :
 - A. MAXIMUM 20" NOMINAL DIAMETER SPIRAL WOUND SHEET METAL DUCT (MIN. 24 GA.).
 - B. MAXIMUM 12" NOMINAL DIAMETER SHEET METAL DUCT (MIN. 28 GA.).
4. NOMINAL 1-1/2" OR 2" THICK GLASS-FIBER DUCT INSULATION (MIN. 3/4 PCF DENSITY) WITH FOIL-SCRIM-KRAFT FACING (SEE NOTE NO. 2 BELOW).
5. MINIMUM 5/8" DEPTH HILTI FS-ONE MAX INTUMESCENT FIRESTOP SEALANT.

NOTES : 1. MAXIMUM DIAMETER OF OPENING = 24".
 2. INSULATION SHOULD BE COMPRESSED 50% SUCH THAT THE ANNULAR SPACE = MINIMUM 1/4", MAXIMUM 1-1/2".

 Hilti Firestop Systems	HILTI, Inc. Plano, Texas USA (800) 879-8000	Sheet 1 of 1 Scale 3/32" = 1" Date Feb. 02, 2018	Drawing No. WL 7153c
	Saving Lives through Innovation and Education		