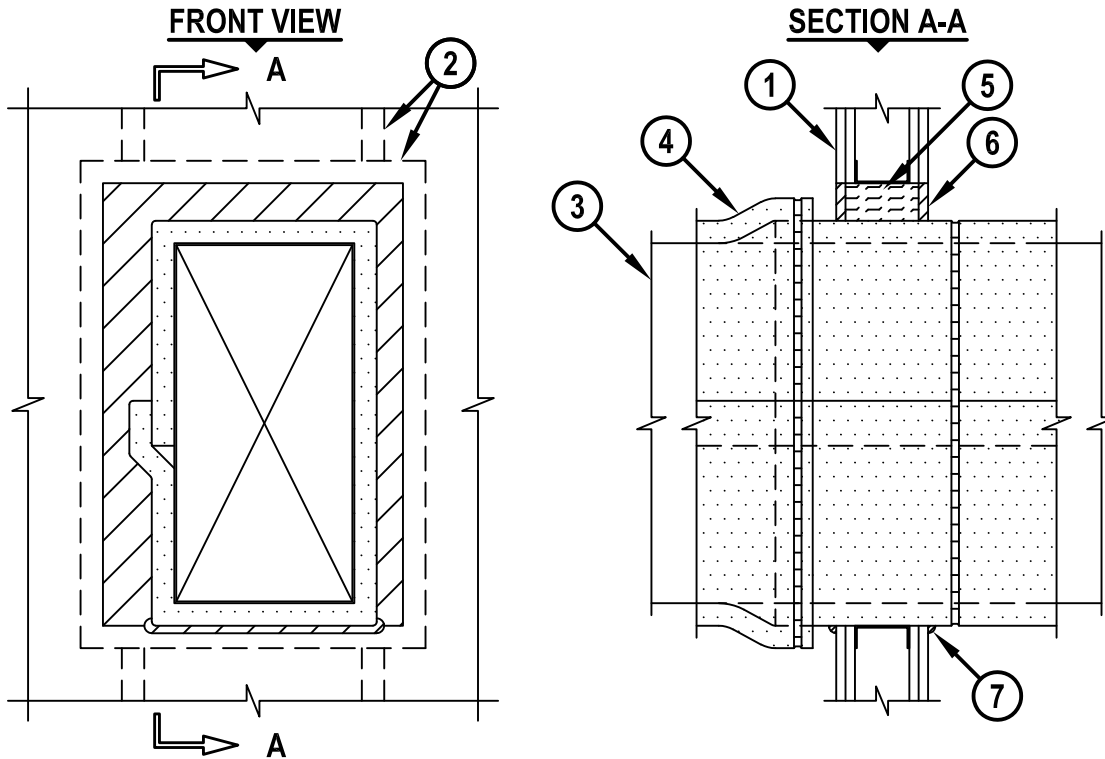


INSULATED DUCT (THERMAL CERAMICS AND UNIFRAX) THROUGH GYPSUM WALL ASSEMBLY

F-RATING = 1-HR. OR 2-HR.
T-RATING = 1-HR. OR 2-HR.



WL7158b.101218

1. GYPSUM WALL ASSEMBLY (UL/cUL CLASSIFIED U400 SERIES) (1-HR. OR 2-HR. FIRE-RATING) (2-HR. SHOWN).
2. STEEL STUDS TO BE MINIMUM 3-5/8" WIDE. OPENING TO BE "FRAMED OUT" ON ALL SIDES OF OPENING.
3. MAXIMUM 24" x 12" STEEL AIR OR GREASE DUCT (MINIMUM 16 GA.).
4. ANY OF THE FOLLOWING DUCT WRAP MATERIAL MAY BE INSTALLED. THICKNESS, TYPE, DENSITY, NUMBER OF LAYERS, AND INSTALLATION SHALL CONFORM TO REQUIREMENTS OUTLINED WITHIN THE APPLICABLE GREASE OR VENTILATION DUCT ASSEMBLY :
 - A. FIREMASTER DUCT WRAP, FIREMASTER DUCT WRAP+, FIREMASTER FAST WRAP, PYROSCAT FP DUCT WRAP, PYROSCAT CSM DUCT WRAP, PYROSCAT FP FASTR DUCT WRAP, OR PYROSCAT CSM FASTR DUCT WRAP MANUFACTURED BY THERMAL CERAMICS.
 - B. FYREWRAPE DUCT INSULATION, FIRESTOP BLANKET, FLAMESHIELD, OR FSB DUCT INSULATION MANUFACTURED BY UNIFRAX CORP.
5. MINIMUM 3-1/2" OR 4-3/4" THICK (FOR 1-HR. OR 2-HR. WALL, RESPECTIVELY) UNFACED SCRAP DUCT WRAP MATERIAL OR MINERAL WOOL (MIN. 3 PCF DENSITY) TIGHTLY PACKED INTO OPENING AND RECESSED TO ACCOMMODATE SEALANT.
6. MINIMUM 5/8" DEPTH HILTI FS-ONE MAX INTUMESCENT FIRESTOP SEALANT.
7. MINIMUM 1/2" BEAD HILTI FS-ONE MAX INTUMESCENT FIRESTOP SEALANT APPLIED AT POINT OF CONTACT.

NOTES : 1. MAXIMUM AREA OF OPENING = 640 SQ. IN., WITH MAXIMUM DIMENSION OF 32".
2. ANNULAR SPACE = MINIMUM 0", MAXIMUM 2".



HILTI, Inc.
Plano, Texas USA (800) 879-8000

Sheet	1 of 1
Scale	5/64" = 1"
Date	Oct. 12, 2018

Drawing No.
**WL
7158b**