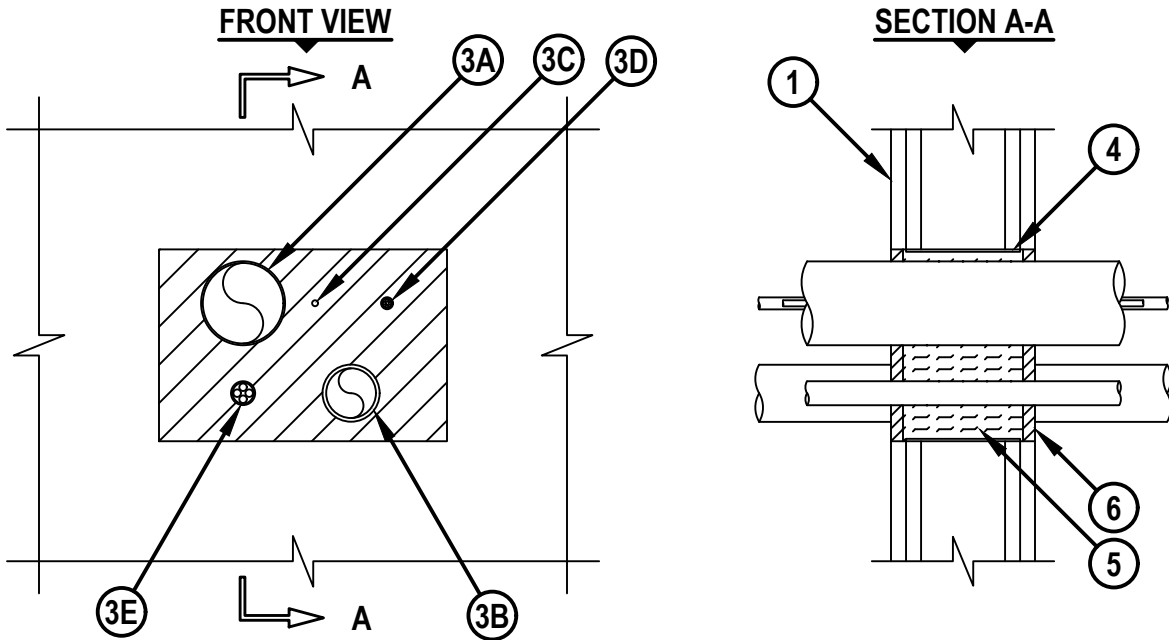


MULTIPLE PENETRATIONS THROUGH GYPSUM WALL ASSEMBLY

F-RATING = 2-HR.
T-RATING = 1/4-HR.



WL 8004r.030823

1. GYPSUM WALL ASSEMBLY (UL/cUL CLASSIFIED U300 OR U400 SERIES) (2-HR. FIRE-RATING).
2. [NOT SHOWN] WOOD STUDS TO CONSIST OF NOMINAL 2" X 4" LUMBER. STEEL STUDS TO BE MINIMUM 2-1/2" WIDE.
3. PENETRATING ITEMS TO BE ANY OF THE FOLLOWING :
 - A. MAXIMUM 3" NOMINAL DIAMETER EMT.
 - B. MAXIMUM 2" NOMINAL DIAMETER PVC PLASTIC PIPE (SCHEDULE 40) (CLOSED PIPING SYSTEM ONLY).
 - C. MAXIMUM 25 PAIR NO. 24 AWG TELEPHONE CABLE.
 - D. MAXIMUM 3/C NO. 10 (+GRND) AWG CABLE (ROMEX).
 - E. MAXIMUM 300 KCMIL POWER CABLE.
4. NO. 8 STEEL WIRE MESH, 4-3/4" LONG AND HAVING A 1" LAP ALONG THE LONGITUDINAL SEAM. WIRE MESH SHOULD BE CENTERED AND FORMED TO FIT PERIPHERY OF OPENING (SEE NOTE NO. 4 BELOW).
5. MINIMUM 4" THICKNESS MINERAL WOOL (MIN. 4 PCF DENSITY) TIGHTLY PACKED.
6. MINIMUM 1/2" DEPTH HILTI FS-ONE MAX INTUMESCENT FIRESTOP SEALANT INSTALLED FLUSH WITH BOTH SURFACES OF WALL.

NOTES : 1. MAXIMUM SIZE OF OPENING = 12" x 8".
 2. ANNULAR SPACE BETWEEN PENETRANTS = MINIMUM 1-11/16", MAXIMUM 7-7/16".
 3. ANNULAR SPACE BETWEEN PENETRANTS AND PERIPHERY OF OPENING = MINIMUM 1/2", MAXIMUM 12" (EXCEPTION: 300 KCMIL POWER CABLE MUST BE MINIMUM 1-1/2" FROM THE EDGE OF OPENING).
 4. AS AN ALTERNATE TO WIRE MESH, OPENING MAY BE FRAMED OUT WITH STUD MATERIAL.



HILTI, Inc.
Plano, Texas USA (800) 879-8000

Sheet	1 of 1
Scale	1/8" = 1"
Date	Mar. 08, 2023

Drawing No.
WL 8004r