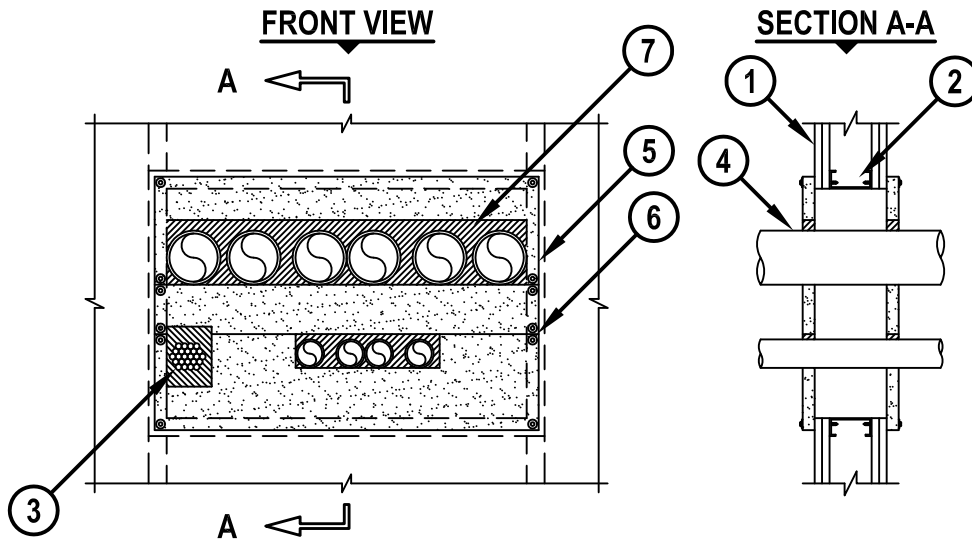


MULTIPLE PENETRANTS THROUGH GYPSUM WALL ASSEMBLY

F-RATING = 1-HR. OR 2-HR.

T-RATING = 0-HR.



WL8059b.011515

1. GYPSUM WALL ASSEMBLY (UL/cUL CLASSIFIED U400 OR V400 SERIES) (1-HR. OR 2-HR. FIRE-RATING).
2. OPENING TO BE "FRAMED-OUT" WITH 3-1/2" WIDE LIGHTGAGE STEEL STUD MATERIAL.
3. CABLE BUNDLE (MAXIMUM 4" DIAMETER) TO CONSIST OF ANY COMBINATION OF THE FOLLOWING :
 - A. MAXIMUM 7/C NO. 12 AWG POWER CABLE WITH PVC JACKET.
 - B. MAXIMUM 25 PAIR NO. 24 AWG TELEPHONE CABLE WITH PVC JACKET.
 - C. MAXIMUM RG 59 COAXIAL CABLE WITH PVC JACKET.
 - D. MAXIMUM 3/C NO. 8 AWG METAL-CLAD CABLE.
 - E. MAXIMUM 3/C (+GROUND) NO. 8 AWG COPPER CONDUCTOR CABLE (ROMEX).
 - F. MAXIMUM 5/8" FIBER OPTIC CABLE WITH PVC JACKET.
4. ONE OR MORE OF THE FOLLOWING PENETRANTS MAY BE INSTALLED WITHIN THE OPENINGS (MAXIMUM QUANTITY = 10) :
 - A. MAXIMUM 4" NOMINAL DIAMETER STEEL PIPE (SCHEDULE 10 OR HEAVIER), STEEL CONDUIT, OR EMT (MAXIMUM QUANTITY = 6).
 - B. MAXIMUM 2" NOM. DIAMETER STEEL PIPE (SCHEDULE 10 OR HEAVIER), STEEL CONDUIT, OR EMT.
5. HILTI CP 675T FIRESTOP BOARD CUT TO OVERLAP OPENING, MINIMUM 1" ON ALL SIDES.
6. WITH SEAMS TIGHTLY BUTTED, FASTEN HILTI CP 675T FIRESTOP BOARD TO FRAMING MATERIAL UTILIZING 2-5/8" LONG SELF-DRILLING STEEL SCREWS WITH 1-1/4" DIAMETER STEEL WASHERS AT EACH CORNER OF FIRESTOP BOARD AND MAXIMUM 8" C/C (ON BOTH SIDES OF WALL).
7. MINIMUM 1" DEPTH HILTI FS-ONE MAX OR FS-ONE INTUMESCENT FIRESTOP SEALANT APPLIED AROUND PENETRANTS (SEE NOTE NO. 3 BELOW).

NOTES : 1. MAXIMUM SIZE OF OPENING = 40" x 19".
 2. ANNULAR SPACE BETWEEN FIRESTOP BOARD AND PENETRANTS AND BETWEEN PENETRANTS = MINIMUM 0", MAXIMUM 1".
 3. AS AN ALTERNATE TO FS-ONE MAX OR FS-ONE, HILTI CP 618 FIRESTOP PUTTY STICK MAY BE APPLIED AROUND CABLES.



HILTI, Inc.
 Tulsa, Oklahoma USA (800) 879-8000

Sheet	1 of 1
Scale	1/16" = 1"
Date	Jan. 15, 2015

Drawing No.
WL 8059b