

UL/cUL SYSTEM NO. W-L-8071

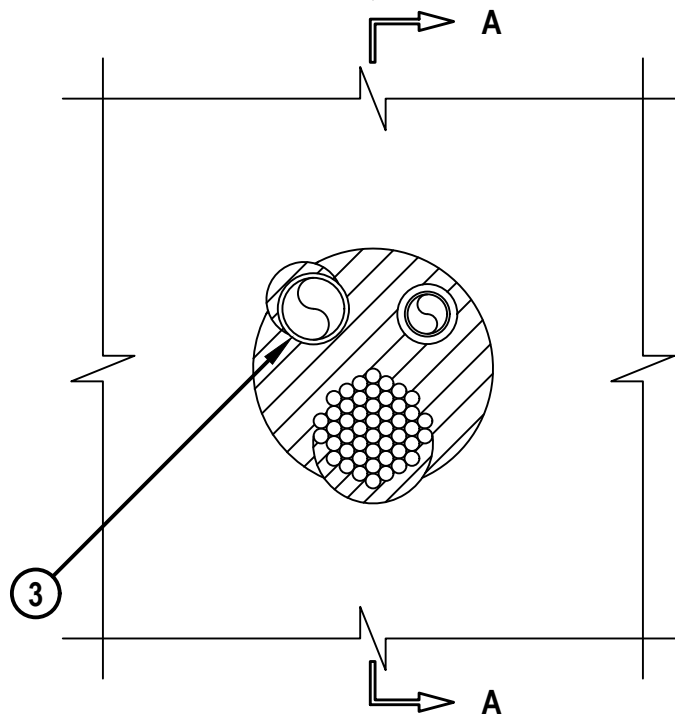
MULTIPLE PENETRANTS THROUGH GYPSUM WALL ASSEMBLY

F-RATING = 1-HR. OR 2-HR.

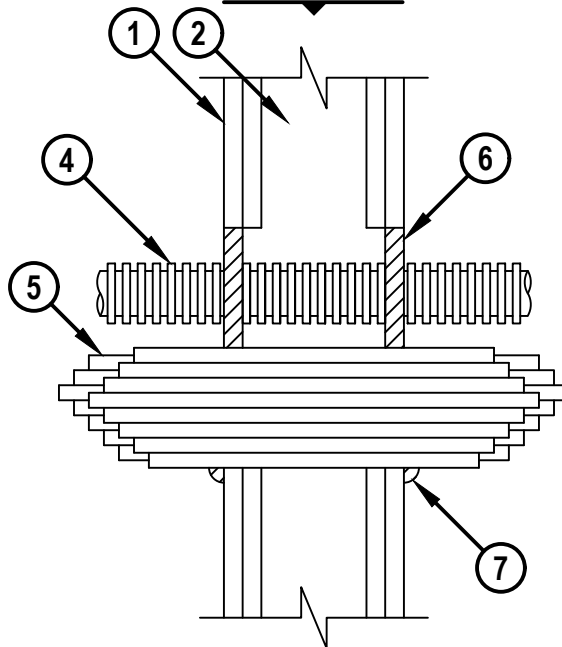
T-RATING = 0-HR. OR 1/2-HR. (SEE NOTE NO. 2 BELOW)

WL8071d.030823

FRONT VIEW



SECTION A-A



HILTI, Inc.
Plano, Texas USA (800) 879-8000

Sheet	1 of 2
Scale	5/32" = 1"
Date	Mar. 08, 2023

Drawing No.
WL
8071d

Saving Lives through Innovation and Education

MULTIPLE PENETRANTS THROUGH GYPSUM WALL ASSEMBLY

F-RATING = 1-HR. OR 2-HR.

T-RATING = 0-HR. OR 1/2-HR. (SEE NOTE NO. 2 BELOW)

WL8071d.030823

1. GYPSUM WALL ASSEMBLY (UL/cUL CLASSIFIED U300, U400 OR V400 SERIES) (1-HR. OR 2-HR. FIRE-RATING) (2-HR. SHOWN).
2. [NOT SHOWN] WOOD STUDS TO CONSIST OF NOMINAL 2" x 4" LUMBER. STEEL STUDS TO BE MINIMUM 3-1/2" WIDE.
3. ONE OR MORE OF THE FOLLOWING PIPES, CONDUITS OR TUBES MAY BE INSTALLED WITHIN THE OPENING :
 - A. MAXIMUM 2" NOMINAL DIAMETER STEEL PIPE (SCHEDULE 10 OR HEAVIER).
 - B. MAXIMUM 2" NOMINAL DIAMETER CAST OR DUCTILE IRON PIPE.
 - C. MAXIMUM 2" NOMINAL DIAMETER STEEL CONDUIT OR EMT.
 - D. MAXIMUM 2" NOMINAL DIAMETER FLEXIBLE STEEL GAS PIPING (WITH OR WITHOUT PLASTIC COVERING) MANUFACTURED BY OMEGA FLEX, INC. OR WARD MFG., INC.
 - E. MAXIMUM 1" NOMINAL DIAMETER FLEXIBLE STEEL GAS PIPING (WITH OR WITHOUT PLASTIC COVERING) MANUFACTURED BY GASTITE, DIVISION OF TITEFLEX.
4. MAXIMUM 2" NOMINAL DIAMETER ENT.
5. MAXIMUM 4" DIAMETER CABLE BUNDLE TO CONSIST OF ANY OF THE FOLLOWING :
 - A. MAXIMUM 200 PAIR NO. 24 AWG TELEPHONE CABLE WITH PVC JACKET.
 - B. MAXIMUM 1/C NO. 500 KCMIL COPPER CONDUCTOR POWER CABLE WITH KLPE JACKET.
 - C. MAXIMUM 3/C (+GROUND) NO. 2/0 AWG ALUMINUM CONDUCTOR SER CABLE WITH PVC JACKET.
 - D. MAXIMUM 3/C NO. 8 AWG COPPER CONDUCTOR METAL CLAD CABLE.
 - E. MAXIMUM 4 PAIR NO. 24 AWG COPPER CONDUCTOR COMMUNICATION CABLE.
 - F. MAXIMUM RG/U COAXIAL CABLE WITH PVC JACKET.
6. MINIMUM 5/8" DEPTH HILTI FS-ONE MAX INTUMESCENT FIRESTOP SEALANT.
7. MINIMUM 1/2" BEAD HILTI FS-ONE MAX INTUMESCENT FIRESTOP SEALANT APPLIED AT POINT OF CONTACT.

ANNULAR SPACE	MINIMUM	MAXIMUM
BETWEEN METALLIC PENETRANTS AND PERIPHERY OF OPENING	0"	2"
BETWEEN METALLIC PENETRANTS, ENT AND CABLES	1/2"	1-1/2"
BETWEEN ENT AND PERIPHERY OF OPENING	1/4"	2"
BETWEEN CABLES AND PERIPHERY OF OPENING	0"	2"

NOTES : 1. MAXIMUM DIAMETER OF OPENING = 8".
 2. T-RATING IS 0-HR. WHEN PENETRANT TYPES 3D OR 3E ARE USED.

 Hilti Firestop Systems	HILTI, Inc. Plano, Texas USA (800) 879-8000	Sheet 2 of 2	Drawing No. WL 8071d
		Scale -	
		Date Mar. 08, 2023	
<i>Saving Lives through Innovation and Education</i>			