

UL/cUL SYSTEM NO. WW-D-0017

FIRE-RATED JOINT THROUGH CONCRETE WALL ASSEMBLY

ASSEMBLY RATING = 2-HR.

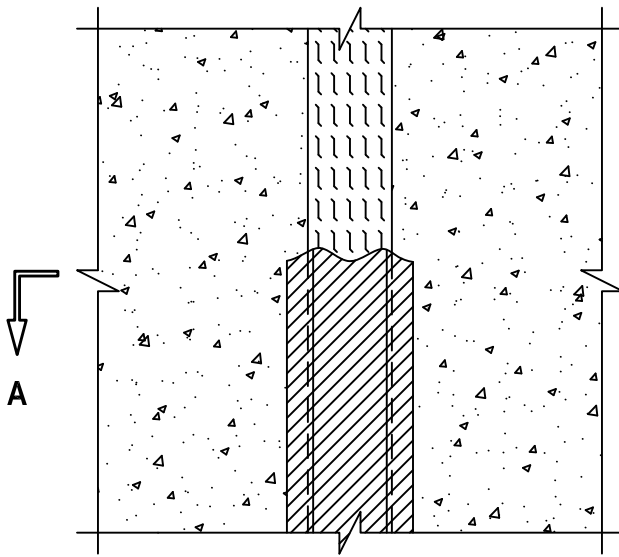
CLASS II MOVEMENT CAPABILITIES - 12.5% COMPRESSION OR EXTENSION

L-RATING AT AMBIENT = LESS THAN 1 CFM/LIN FT

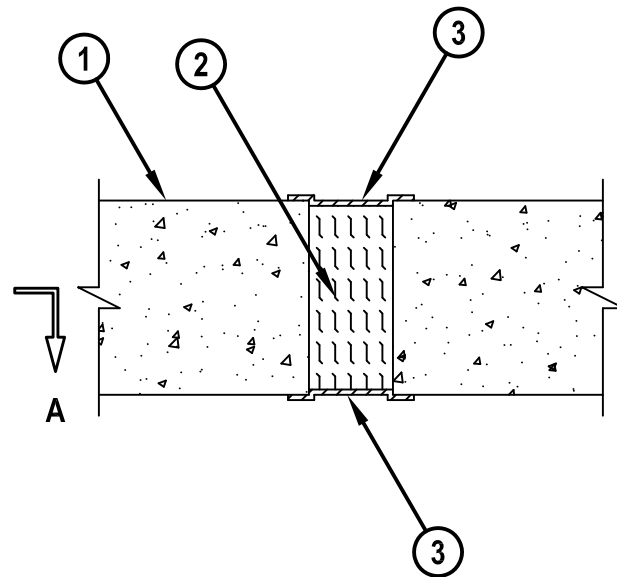
L-RATING AT 400°F = LESS THAN 1 CFM/LIN FT

WWD0017e.052510

FRONT VIEW



SECTION A-A



1. CONCRETE WALL ASSEMBLY (2-HR. FIRE-RATING) :
 - A. LIGHTWEIGHT OR NORMAL WEIGHT CONCRETE WALL (MIN. 4-5/8" THICK).
 - B. ANY UL/cUL CLASSIFIED CONCRETE BLOCK WALL.
2. MINIMUM 4-3/8" THICKNESS MINERAL WOOL (MIN. 4 PCF DENSITY) COMPRESSED MINIMUM 50%.
3. MINIMUM 1/8" (WET) THICKNESS HILTI CFS-SP WB FIRESTOP JOINT SPRAY OR HILTI CP 672 SPEED SPRAY APPLIED WITHIN THE JOINT, FLUSH WITH EACH SURFACE OF WALL AND OVERLAPPING MINIMUM 1/2" ONTO THE WALL ON BOTH SIDES OF JOINT.

NOTE : MAXIMUM WIDTH OF JOINT = 2".



HILTI, Inc.
Tulsa, Oklahoma USA (800) 879-8000

Sheet	1 of 1
Scale	1/4" = 1"
Date	May 25, 2010

Drawing No.
**WWD
0017e**

Saving Lives through Innovation and Education