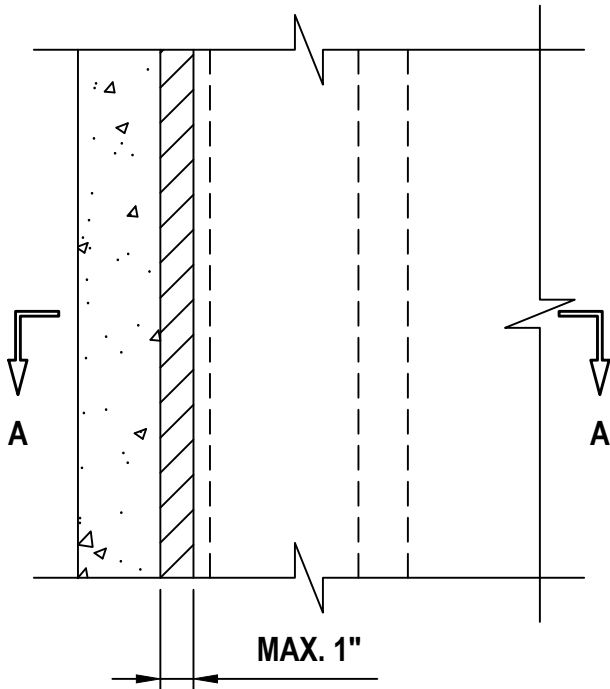


WALL TO WALL JOINT : GYPSUM WALL TO CONCRETE OR BLOCK WALL

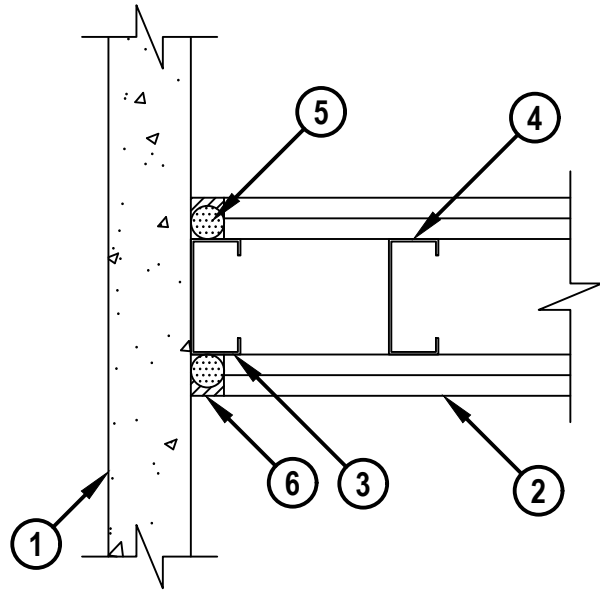
ASSEMBLY RATING = 1-HR. OR 2-HR. (DEPENDING ON RATING OF WALL ASSEMBLIES)
 CLASS II MOVEMENT CAPABILITIES - 19% COMPRESSION OR EXTENSION

WWD0105c.091322

FRONT VIEW



SECTION A-A



1. CONCRETE WALL ASSEMBLY (1-HR. OR 2-HR. FIRE-RATING) :
 - A. LIGHTWEIGHT OR NORMAL WEIGHT CONCRETE WALL ASSEMBLY (MINIMUM 2-1/2" THICK).
 - B. ANY UL/cUL CLASSIFIED CONCRETE BLOCK WALL.
2. GYPSUM WALL ASSEMBLY (UL/cUL CLASSIFIED U400 SERIES) (1-HR. OR 2-HR. FIRE-RATING) (2-HR. SHOWN).
3. WALL RUNNER (MINIMUM 25 GA., 1-1/2" FLANGES) SECURED TO WALL ASSEMBLY WITH STEEL CONCRETE FASTENERS (SPACED 12" O.C.).
4. STEEL STUDS (MIN. 3-1/2" WIDE), CUT 3/4" TO 1" LESS IN LENGTH THAN ASSEMBLY HEIGHT, NESTING IN CEILING RUNNER WITHOUT FIRST STUD ADJACENT TO CONCRETE WALL SHALL NOT EXCEED 4" FROM WALL FACE.
5. APPROPRIATELY SIZED POLYETHYLENE BACKER ROD RECESSED FROM BOTH SURFACES OF WALL AS REQUIRED TO ACCOMMODATE FIRESTOP SEALANT.
6. MINIMUM 1/4" DEPTH HILTI CP 606 FLEXIBLE FIRESTOP SEALANT FLUSH WITH EACH SURFACE OF WALL.



HILTI, Inc.
 Plano, Texas USA (800) 879-8000

Sheet	1 of 1
Scale	11/64" = 1"
Date	Sep. 13, 2022

Drawing No.
**WWD
 0105c**