

FIRE-RATED JOINT THROUGH CONCRETE WALL ASSEMBLY

ASSEMBLY RATING = 2-HR.

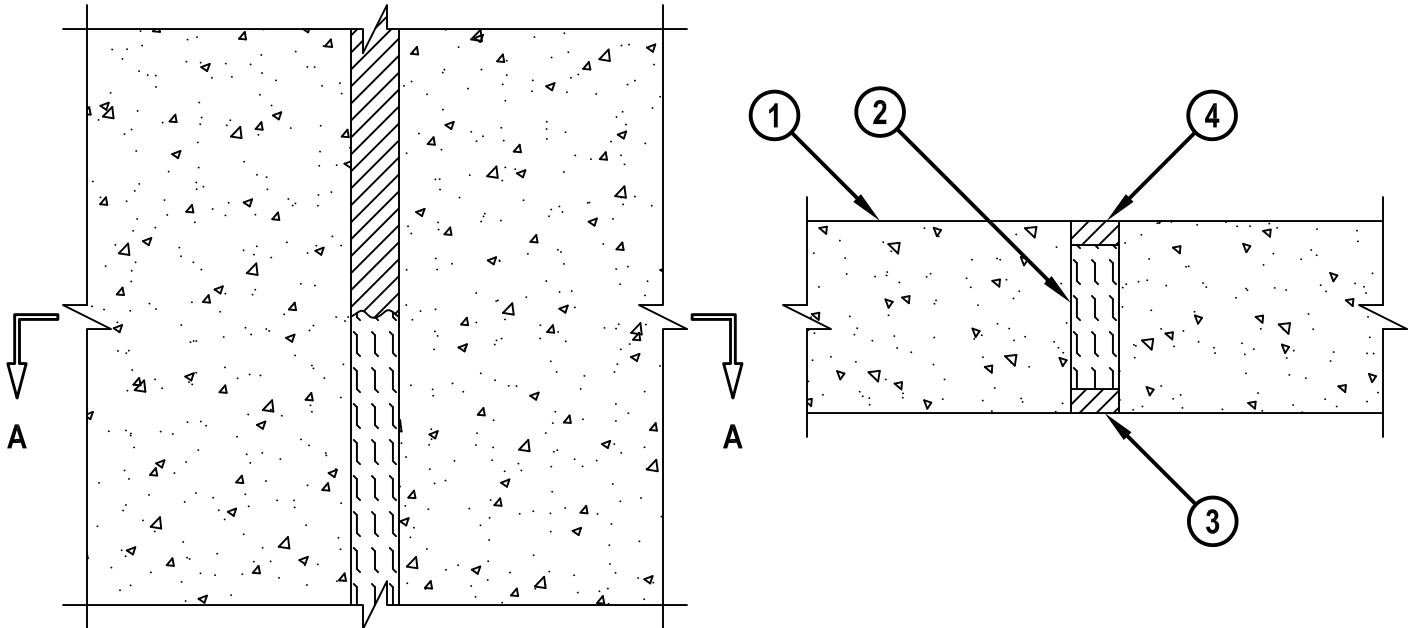
L-RATING AT AMBIENT = LESS THAN 1 CFM / LIN FT

L-RATING AT 400° F = LESS THAN 1 CFM / LIN FT

WWS0042d.011819

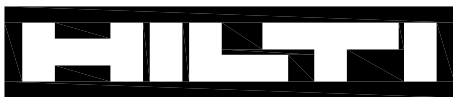
FRONT VIEW

SECTION A-A



1. CONCRETE WALL ASSEMBLY (2-HR. FIRE-RATING) :
 - A. LIGHTWEIGHT OR NORMAL WEIGHT CONCRETE WALL (MINIMUM 4" THICK).
 - B. ANY UL/cUL CLASSIFIED CONCRETE BLOCK WALL.
2. MINIMUM 3" THICKNESS MINERAL WOOL SAFING (MIN. 4 PCF DENSITY) TIGHTLY PACKED.
3. MINIMUM 1/2" DEPTH OF ANY OF THE FOLLOWING FIRESTOP SEALANTS APPLIED TO EXTERIOR OF WALL :
 - A. 790 OR 795 SEALANT MANUFACTURED BY DOW SILICONES CORP.
 - B. PENSIL 300 SEALANT MANUFACTURED BY GENERAL ELECTRIC SILICONE PRODUCTS DIVISION.
 - C. DYNATROL II CAULK, OR 864 SILICONE CAULK MANUFACTURED BY PECORA CORP.
4. MINIMUM 1/2" DEPTH HILTI CP 606 FLEXIBLE FIRESTOP SEALANT OR HILTI CFS-S SIL GG FIRESTOP SILICONE SEALANT APPLIED TO INTERIOR OF WALL.

NOTE : MAXIMUM WIDTH OF JOINT = 1".



Hilti Firestop Systems

HILTI, Inc.
Plano, Texas USA (800) 879-8000

Sheet	1 of 1
Scale	1/4" = 1"
Date	Jan. 18, 2019

Drawing No.

**WWS
0042d**