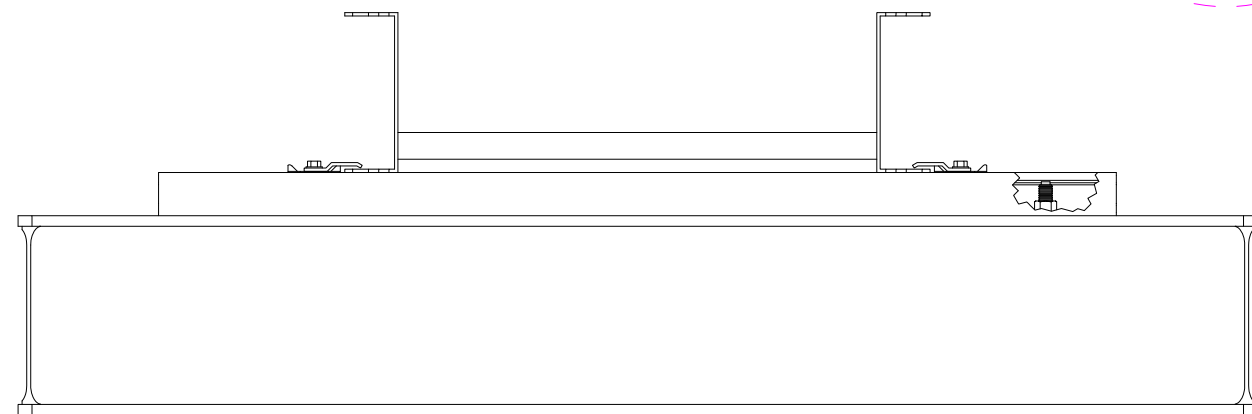
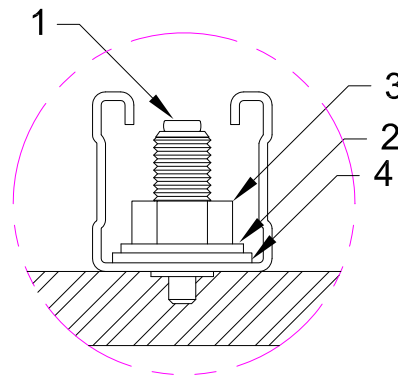
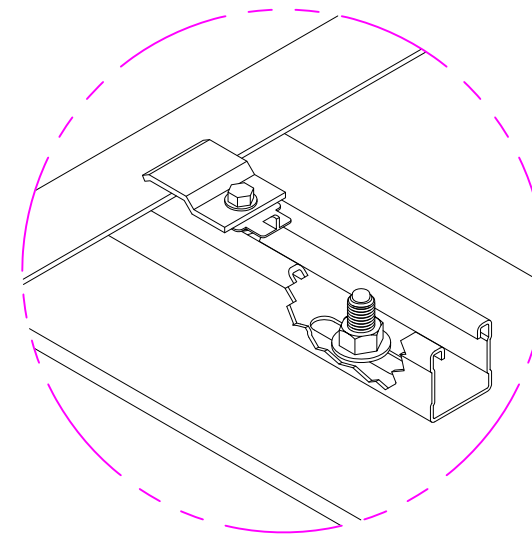


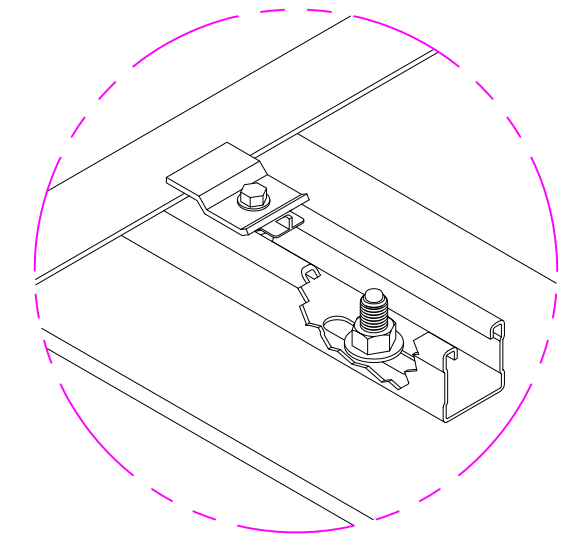
PLAN VIEW



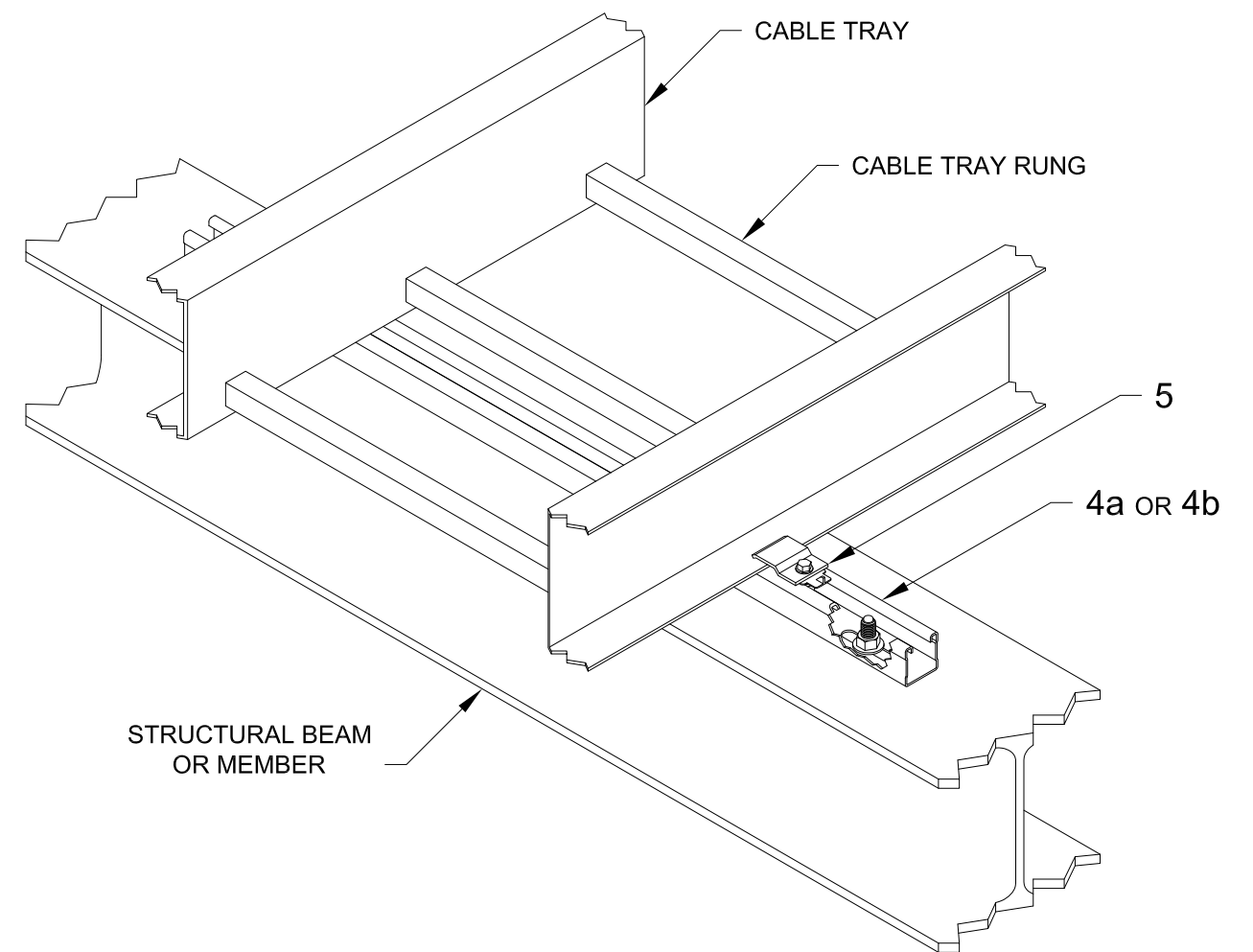
FRONT ELEVATION



HOLD DOWN CLIP



EXPANSION GUIDE CLIP



No.	Unit Qty	Unit	Description	Box Qty	# Boxes Needed	Item No.
1	AS REQ'D	EA	X-BTW10-24-6 SN12-R	100	AS REQ'D	377076
2	AS REQ'D	EA	WASHER 3/8" SS316	200	AS REQ'D	411780
3	AS REQ'D	EA	HEX NUT STANDARD 3/8" SS316	100	AS REQ'D	411775
4	AS REQ'D	EA	HELICAL SPRING LOCK WASHER 3/8" SS 316	-	AS REQ'D	-
5a	AS REQ'D	EA	STRUT HS-158-12/HDG 10'	1	AS REQ'D	407570
5b	AS REQ'D	EA	STRUT MS-158-12/ SS316TI 9'-10" (3M)	1	AS REQ'D	3424527
6	AS REQ'D	EA	CABLE TRAY CLIP ASSEMBLY (BY OTHERS)	-	AS REQ'D	-

NOTE:

1. SPACE POWDER-ACTUATED STUDS ACCORDINGLY TO ACCOMMODATE DESIGN LOADS. MINIMUM OF TWO STUDS PER STRUT SECTION.
2. POWDER-ACTUATED STUDS SHALL BE INSTALLED PER HILTI INSTALLATION INSTRUCTIONS.



Information and loads are recommendations for static application, and based on the published data in the Hilti Technical Guide (including allowable load values, factors of safety, methods of calculation and limiting factors). The responsible project engineer must verify suitability for any specific application. Modification to design may alter performance and should be evaluated by engineer of record.

Project	DESCRIPTION	Drawn	Developer
	DETAILS FOR ELECTRICAL ENGINEERS	HAM/JGB	RPB
		Date	25 JUN 12
		Drawing No.	12-122-02
		Index	Sheet
		E	1/1