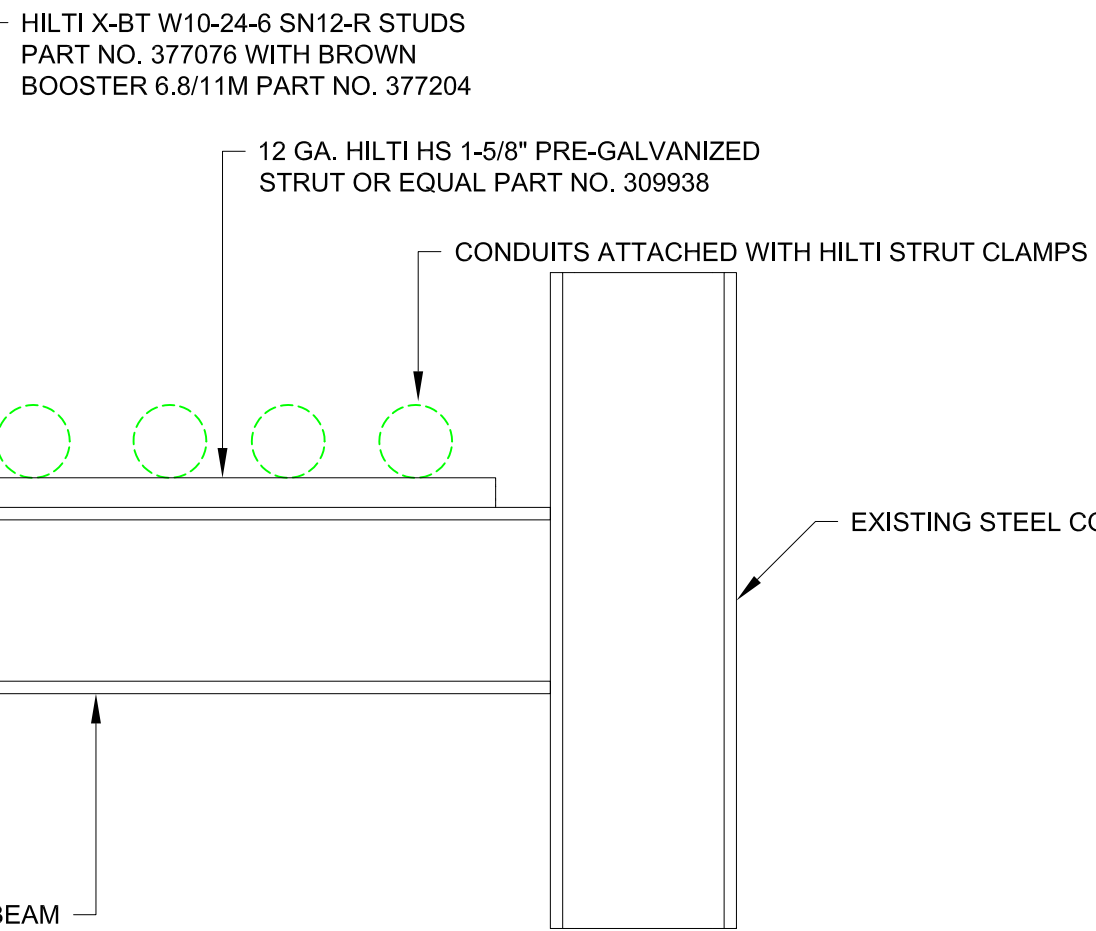
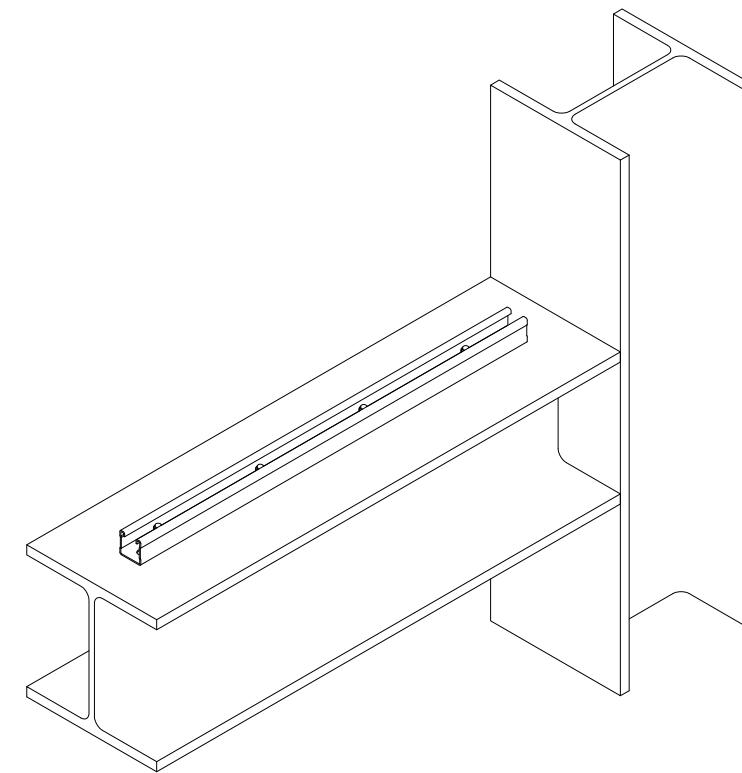
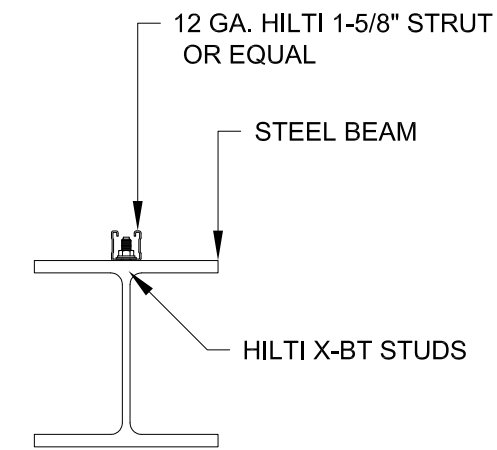


**PLAN VIEW**



**SIDE VIEW**



**FRONT VIEW**

- NOTE:**
1. SPACE POWDER-ACTUATED STUDS ACCORDINGLY TO ACCOMMODATE DESIGN LOADS. MINIMUM OF TWO STUDS PER STRUT SECTION.
  2. POWDER-ACTUATED STUDS SHALL BE INSTALLED PER HILTI INSTALLATION INSTRUCTIONS.



Information and loads are recommendations for static application, and based on the published data in the Hilti Technical Guide (including allowable load values, factors of safety, methods of calculation and limiting factors). The responsible project engineer must verify suitability for any specific application. Modification to design may alter performance and should be evaluated by engineer of record.

Project  
**DETAILS FOR ELECTRICAL ENGINEERS**

Description  
**STRUT ATTACHED BY HILTI X-BT STUDS FOR CONDUIT INSTALLATION**

Drawn	Developer
HAM/JGB	RPB
Date	
25 JUN 12	
Drawing No.	
12-122-05	
Index	Sheet
F	1/1