

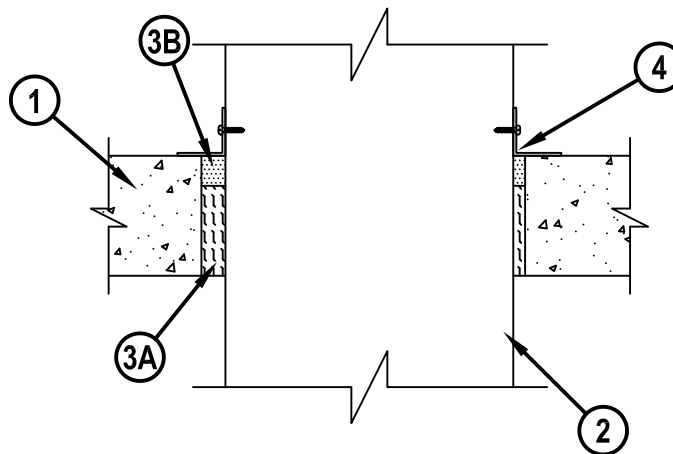
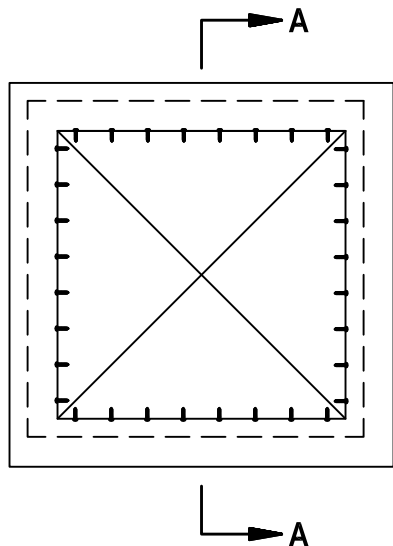


Classified by
Underwriters Laboratories, Inc.
to UL 1479 and CAN/ULC-S115

System No. C-AJ-7051

ANSI/UL1479 (ASTM E814)	CAN/ULC S115
F Rating - 3 Hr	F Rating — 3 Hr
T Rating - 1 Hr	FT Rating - 1 Hr
	FH Rating - 3 Hr
	FTH Rating - 1 Hr

CAJ 7051



SECTION A-A

1. Floor or Wall Assembly — Min 4-1/2 in. (114 mm) thick reinforced lightweight or normal weight (100-150 pcf or 1600-2400 kg/m³) concrete floor or min 5-1/2 in. (140 mm) thick lightweight or normal weight concrete wall. Wall may also be constructed of any UL Classified Concrete Blocks*. Max area of opening is 1024 in. sq (6606 cm²) with a max dimension of 32 in. (813 mm).

See Concrete Blocks (CAZT) category in the Fire Resistance Directory for names of manufacturers.

2. Steel Duct — Nom 30 by 30 in. (762 by 762 mm) by No. 24 gauge (or heavier) galv steel duct. One steel duct to be positioned within the firestop system. The annular space shall be min 1/4 in. (6 mm) to max 1-3/4 in. (44 mm). Duct to be rigidly supported on both sides of floor or wall assembly.

2A. Coated Duct* — As an alternate to Item 2, nom 30 by 30 in. (762 by 762 mm) (or smaller) steel air duct; duct supplied coated with BW11 coating material. One duct to be installed within the firestop system with an annular space of min 1/4 in. (6 mm) to max 1-3/4 in. (44 mm). Duct sections shall be assembled using bolted flanges or SMACNA approved Transverse Joint Reinforcements. Duct to be rigidly supported on both sides of the floor or wall assembly.

FIRESPRAY INTERNATIONAL LTD — FLAMEBAR BW11 FIRE RATED DUCTWORK

3. Firestop System — The firestop system shall consist of the following:

A. Packing Materials — Min 3-1/2 in. (89 mm) thickness of min 4 pcf (64 kg/m³) mineral wool batt insulation firmly packed into opening as a permanent form between the bare steel duct and the periphery of the opening. Packing material to be recessed from top surface of floor or both surfaces of wall as required to accommodate the required thickness of fill material.

B. Fill, Void or Cavity Material* — Sealant — Min 1 in. (25 mm) thickness of fill material applied within the annulus, flush with top surface of floor or with both surfaces of wall.

HILTI CONSTRUCTION CHEMICALS, DIV OF HILTI INC — CP 606 Flexible Firestop Sealant, FS-ONE Sealant or FS-ONE MAX Intumescent Sealant

4. Steel Retaining Angle — Nom 2 in. by 2 in. (51 by 51 mm) by No. 16 gauge (or heavier) steel angles attached to all four sides of the steel duct or coated duct on the top surface of floor or both surfaces of the wall. The angles shall be attached with No. 8 (or larger) steel sheet metal screws spaced max of 1 in. (25 mm) from each end and a max of 3 in. (76 mm) OC.

* Indicates such products shall bear the UL or cUL Certification Mark for jurisdictions employing the UL or cUL Certification (such as Canada), respectively.



Hilti Firestop Systems

Reproduced by HILTI, Inc. Courtesy of
Underwriters Laboratories, Inc.
October 27, 2017