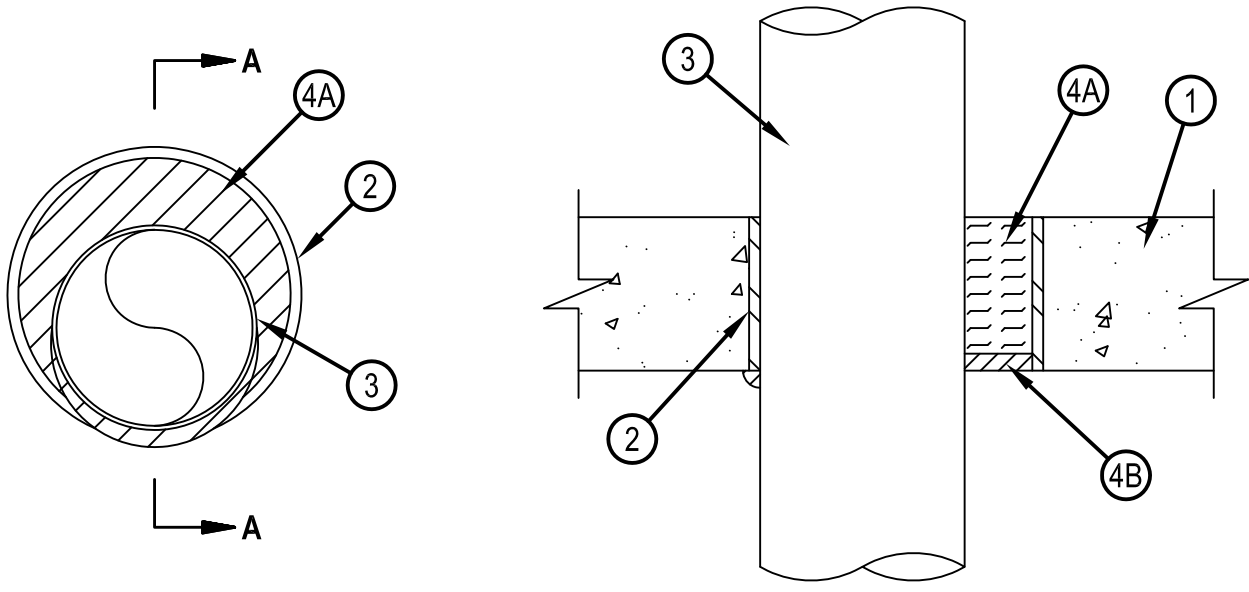




Classified by  
Underwriters Laboratories, Inc.  
to UL 1479 and CAN/ULC-S115

# System No. C-AJ-7103

ANSI/UL1479 (ASTM E814)	CAN/ULC S115
F Rating — 2 Hr	F Rating — 2 Hr
T Rating — 1/4 Hr	FT Rating — 1/4 Hr
	FH Rating — 2 Hr
	FTH Rating — 1/4 Hr



**SECTION A-A**

1. Floor or Wall Assembly — Min 4-1/2 in. (114 mm) thick reinforced lightweight or normal weight (100-150 pcf or 1600-2400 kg/m<sup>3</sup>) concrete. Floor may also be constructed of any min 6 in. (152 mm) thick UL Classified hollow-core Precast Concrete Units\*. Wall may also be constructed of any UL Classified Concrete Blocks\*. Max diam of opening is 8 in. (203 mm). Max diam of opening in floors constructed of hollow-core precast concrete units is 7 in. (178 mm).  
See Concrete Blocks (CAZT) and Precast Concrete Units (CFTV) categories in the Fire Resistance Directory for names of manufacturers.
2. Steel Sleeve (Optional) — Nom 8 in. (203 mm) diam (or smaller) Schedule 10 (or heavier) steel pipe sleeve cast or grouted into floor or wall assembly, flush with both surfaces of floor or wall.
3. Steel Vent Duct — Nom 6 in. (152 mm) diam (or smaller) No. 28 gauge (or heavier) galv steel duct. One duct to be installed either concentrically or eccentrically within the firestop system. The annular space shall be min 0 in. (0 mm, point contact) to max 2 in. (51 mm). Duct to be rigidly supported on both sides of floor or wall assembly.
4. Firestop System — The firestop system shall consist of the following:
  - A. Packing Material — Min 4 in. (102 mm) thickness of min 4 pcf (64 kg/m<sup>3</sup>) mineral wool batt insulation firmly packed into opening as a permanent form. Packing material to be recessed from bottom or top surface of floor or from both surfaces of wall as required to accommodate the required thickness of fill material.
  - B. Fill, Void or Cavity Material\* — Min 1/2 in. (13 mm) thickness of fill material applied within the annulus, flush with bottom or top surface of floor or with both surfaces of wall . A min 1/2 in. (13 mm) diam bead of caulk shall be applied at the point contact location between pipe and sleeve/concrete.

HILTI CONSTRUCTION CHEMICALS, DIV OF HILTI INC — FS ONE Sealant or FS-ONE MAX Intumescent Sealant.

\* Indicates such products shall bear the UL or cUL Certification Mark for jurisdictions employing the UL or cUL Certification (such as Canada), respectively.



Reproduced by HILTI, Inc. Courtesy of  
Underwriters Laboratories, Inc.  
January 14, 2015