

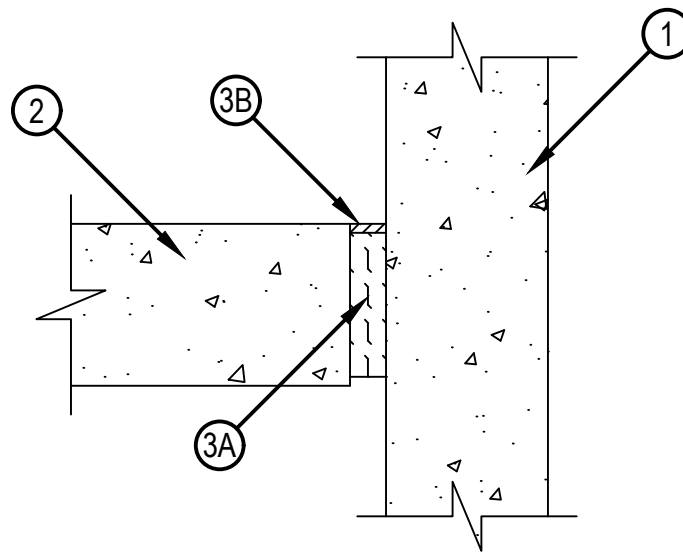


Classified by
Underwriters Laboratories, Inc.
to UL 2079 and CAN/ULC-S115

System No. FW-D-0067

FWD 0067

ANSI/UL2079	CAN/ULC S115
Assembly Rating — 2 Hr	F Rating — 2 Hr
Nominal Joint Width - 1 In.	FT Rating — 2 Hr
Class II and III Movement Capabilities — 25% Compression or Extension	FH Rating — 2 Hr
L Rating at Ambient — Less than 1 CFM/Lin. Ft.	FTH Rating — 2 Hr
L Rating at 400° F — Less than 1 CFM/Lin. Ft.	Nominal Joint Width - 1 In.
	Class II and III Movement Capabilities — 25% Compression or Extension
	L Rating at Ambient — Less than 1 CFM/Lin. Ft.
	L Rating at 400° F — Less than 1 CFM/Lin. Ft.



1. Wall Assembly — Min 4-1/2 in. (114 mm) thick reinforced lightweight or normal weight (100-150 pcf 1600-2400 kg/cu meter) concrete. Wall may also be constructed of any UL Classified Concrete Blocks*.
See Concrete Blocks (CAZT) category in the Fire Resistance Directory for names of manufacturers.
 2. Floor Assembly — Min 4-1/2 in. (114 mm) thick reinforced lightweight or normal weight (100-150 pcf 1600-2400 kg/cu meter) concrete.
 3. Joint System — Max width of joint (at time of installation of joint system) is 1 in. (25 mm). The joint system is designed to accommodate a max 25 percent compression or extension from its installed width. The joint system shall consist of the following:
 - A. Forming Material* — Min 4.0 pcf (64 kg/cu meter) mineral wool insulation installed in joint opening as a permanent form. Pieces of batt cut to min width of 4 in. (102 mm) and installed edge-first into the joint opening, paralleled with the joint directions, such that batt sections are compressed min 50 percent in thickness and that the compressed batt sections are recessed from top surface of floor as required to accommodate the required thickness of fill material.
ROCK WOOL MANUFACTURING CO — Delta Board
IIG MINWOOL L L C — MinWool-1200 Safing
JOHNS MANVILLE INTERNATIONAL INC — Safing
THERMAFIBER INC — SAF Mineral Wool
 - B. Fill, Void or Cavity Material* (Caulk) — Min 1/4 in. (6 mm) thickness of fill material applied within the joint, flush with top surface of floor.
HILTI CONSTRUCTION CHEMICALS, DIV OF HILTI INC — CFS-S SIL GG or CFS-S SIL SL
- * Indicates such products shall bear the UL or cUL Certification Mark for jurisdictions employing the UL or cUL Certification (such as Canada), respectively.



Reproduced by HILTI, Inc. Courtesy of
Underwriters Laboratories, Inc.
October 20, 2015