

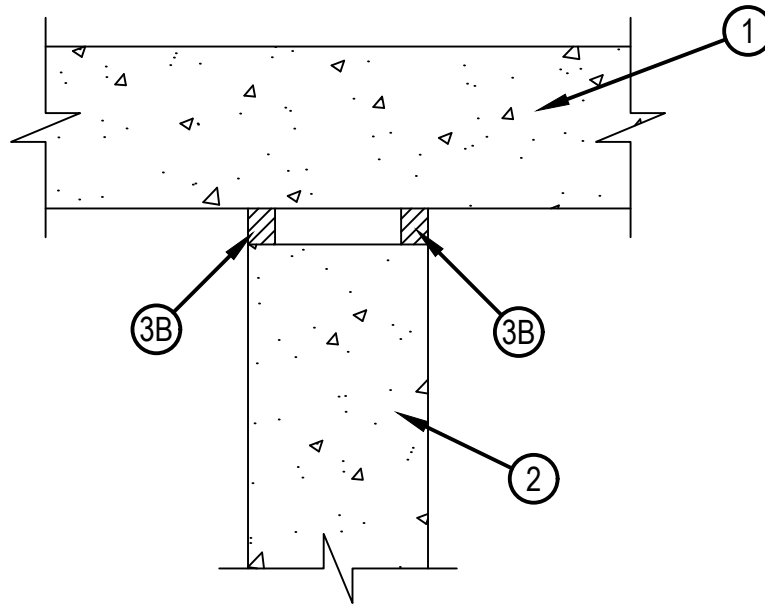


Classified by
Underwriters Laboratories, Inc.
to UL 2079 and CAN/ULC-S115

System No. HW-D-0703

HWD 0703

ANSI/UL2079	CAN/ULC S115
Assembly Rating — 2 Hr	F Rating — 2 Hr
Nominal Joint Width - 1 In.	FT Rating — 2 Hr
Class II and III Movement Capabilities — 25% Compression or Extension	FH Rating — 2 Hr
	FTH Rating — 2 Hr
	Nominal Joint Width - 1 In.
	Class II and III Movement Capabilities — 25% Compression or Extension



1. Floor Assembly — Min 4-1/2 in. (114 mm) thick reinforced lightweight or normal weight (100-150 pcf (1600-2400 kg/cu meter)) structural concrete. Floor may also be constructed of any min 6 in. (152 mm) thick UL Classified hollow core Precast Concrete Units*. See Precast Concrete Units (CFTV) category in the Fire Resistance Directory for names of manufacturers.
2. Wall Assembly — Min 5 in. (127 mm) thick reinforced lightweight or normal weight (100-150 pcf (1600-2400 kg/cu meter)) structural concrete. Wall may also be constructed of any UL Classified Concrete Blocks*. See Concrete Blocks (CAZT) category in the Fire Resistance Directory for names of manufacturers.



Reproduced by HILTI, Inc. Courtesy of
Underwriters Laboratories, Inc.
October 20, 2015

System No. HW-D-0703

HW-D-0703

3. Joint System — Max separation between bottom of floor and top of wall (at time of installation of joint system) is 1 in. (25 mm). The joint system is designed to accommodate a max 25 percent compression from its installed width. — The joint system consists of a packing or forming material and a fill material between the top of the wall and the bottom of the floor, as follows:

A. Packing Material — (Optional - Not Shown) — Polyurethane foam backer rod firmly packed into joint opening as a permanent form and recessed from each surface of wall to accommodate the required thickness of fill material.

A1 Forming Material* — (Optional - Not Shown) — Min 3/4 in. (19 mm) width of 4 pcf (64 kg/cu meter) mineral wool batt insulation firmly packed into the gap between the top of the wall and bottom of the floor on both sides of the wall.

IIG MINWOOL L L C — MinWool-1200 Safing

JOHNS MANVILLE INTERNATIONAL INC — Safing

ROCK WOOL MANUFACTURING CO — Delta Board or Delta-8

ROCKWOOL MALAYSIA SDN BHD — Type Safe

ROXUL INC — Type Safe

THERMAFIBER INC — Type SAF

B. Fill, Void or Cavity Material* — A min 1/2 in. (13 mm) thickness of fill material installed on each side of the wall between the top of the wall and bottom of the concrete floor.

HILTI CONSTRUCTION CHEMICALS, DIV OF HILTI INC — CFS-S SIL GG

* Indicates such products shall bear the UL or cUL Certification Mark for jurisdictions employing the UL or cUL Certification (such as Canada), respectively.



Hilti Firestop Systems

Reproduced by HILTI, Inc. Courtesy of
Underwriters Laboratories, Inc.
October 20, 2015

Page: 2 of 2