

PLASTIC PIPE THROUGH CONCRETE FLOOR/WALL OR BLOCK WALL ASSEMBLY

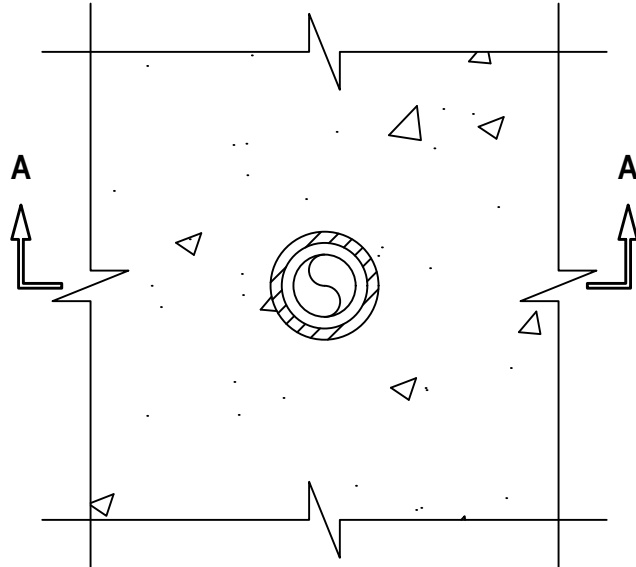
F AND FH-RATINGS = 2-HR.

FT AND FTH-RATINGS = 1/2-HR.

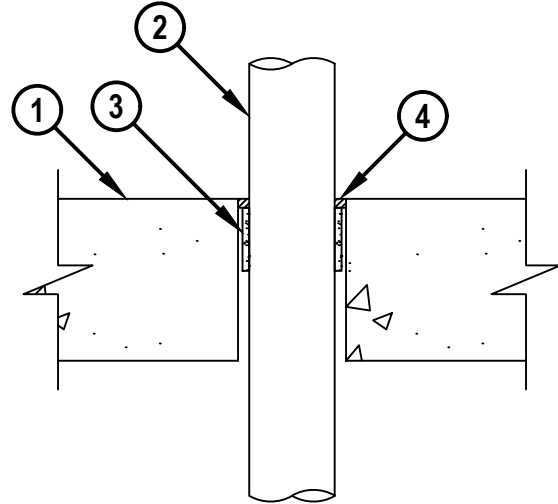
NOTE : TESTED WITH A 50 Pa PRESSURE DIFFERENTIAL

CAJ2677c.090921

TOP VIEW



SECTION A-A



1. CONCRETE FLOOR OR WALL ASSEMBLY (2-HR. FIRE-RATING) :
 - A. LIGHTWEIGHT OR NORMAL WEIGHT CONCRETE FLOOR OR WALL (MINIMUM 4-1/2" THICK).
 - B. ANY UL/cUL CLASSIFIED CONCRETE BLOCK WALL.
2. PENETRATING ITEM TO BE ONE OF THE FOLLOWING :
 - A. MAXIMUM 2" (63 MM OD) NOMINAL DIAMETER AQUATHERM GREENPIPE POLYPROPYLENE (PP-R) PLASTIC PIPE (SDR 7.4) (CLOSED OR VENTED PIPING SYSTEM).
 - B. MAXIMUM 2" (63 MM OD) NOMINAL DIAMETER AQUATHERM BLUEPIPE POLYPROPYLENE (PP-RCT) PLASTIC PIPE (SDR 9) (CLOSED OR VENTED PIPING SYSTEM).
 - C. MAXIMUM 2" (63 MM OD) NOMINAL DIAMETER NUPI AMERICAS NIRON POLYPROPYLENE (PP-RCT) PLASTIC PIPE (SDR 7.3) (CLOSED OR VENTED PIPING SYSTEM).
 - D. MAXIMUM 2" (63 MM OD) NOMINAL DIAMETER AQUATECHNIK NA FUSION-TECH POLYPROPYLENE (PP-RCT) PLASTIC PIPE (SDR 7.4) (CLOSED OR VENTED PIPING SYSTEM).
 - E. MAXIMUM 2" (63 MM OD) NOMINAL DIAMETER UPONOR POLYPROPYLENE (PP) PLASTIC PIPE (SDR 9) (CLOSED OR VENTED PIPING SYSTEM).
3. HILTI CP 648E WRAP STRIP (NOMINAL 3/16" THICK x 1-3/4" WIDE) WRAPPED CONTINUOUS AROUND CIRCUMFERENCE OF PIPE, COVERING ONCE, WITH ENDS BUTTED AND HELD IN PLACE WITH TAPE. WRAP STRIP RECESSED 1/4" FROM THE TOP SURFACE OF FLOOR, OR BOTH SURFACES OF WALL.
4. MINIMUM 1/4" DEPTH HILTI FS-ONE MAX INTUMESCENT FIRESTOP SEALANT.

NOTES : 1. MAXIMUM DIAMETER OF OPENING = 3".
 2. ANNULAR SPACE = NOMINAL 5/16".
 3. HILTI CP 648E WRAP STRIP AND HILTI FS-ONE MAX INTUMESCENT FIRESTOP SEALANT IS REQUIRED ON BOTH SIDES OF A WALL.



HILTI, Inc.
 Plano, Texas USA (800) 879-8000

Sheet	1 of 1
Scale	3/16" = 1"
Date	Sep. 09, 2021

Drawing No.
**CAJ
 2677c**