

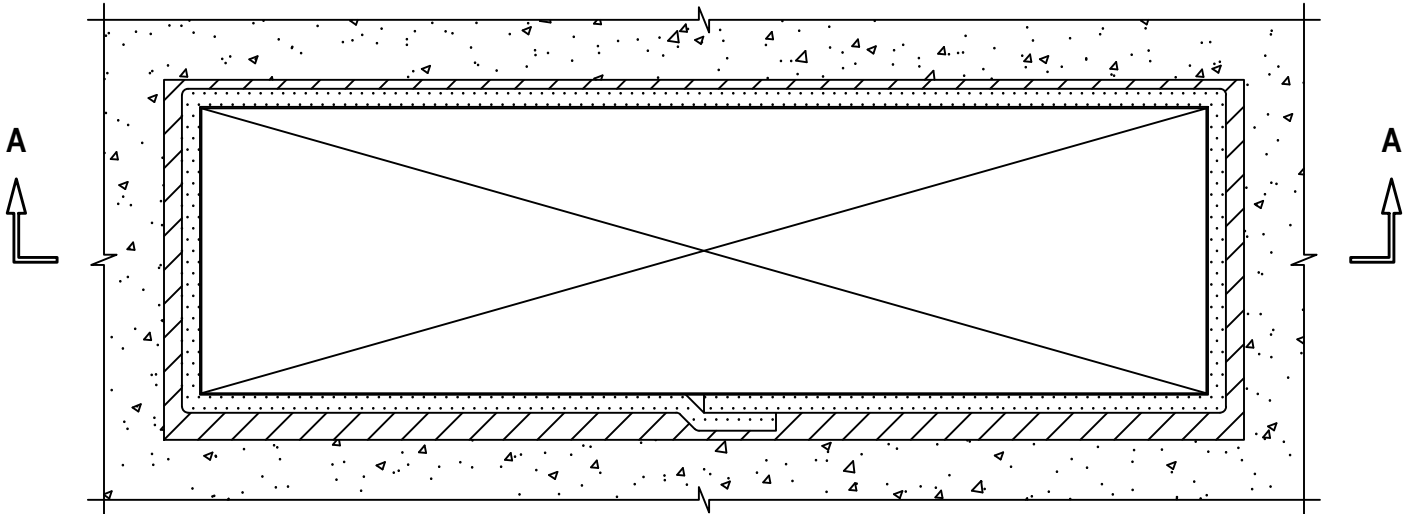
UL/cUL SYSTEM NO. C-AJ-7152

**INSULATED DUCT (THERMAL CERAMICS THROUGH CONCRETE FLOOR/WALL
OR BLOCK WALL ASSEMBLY)**

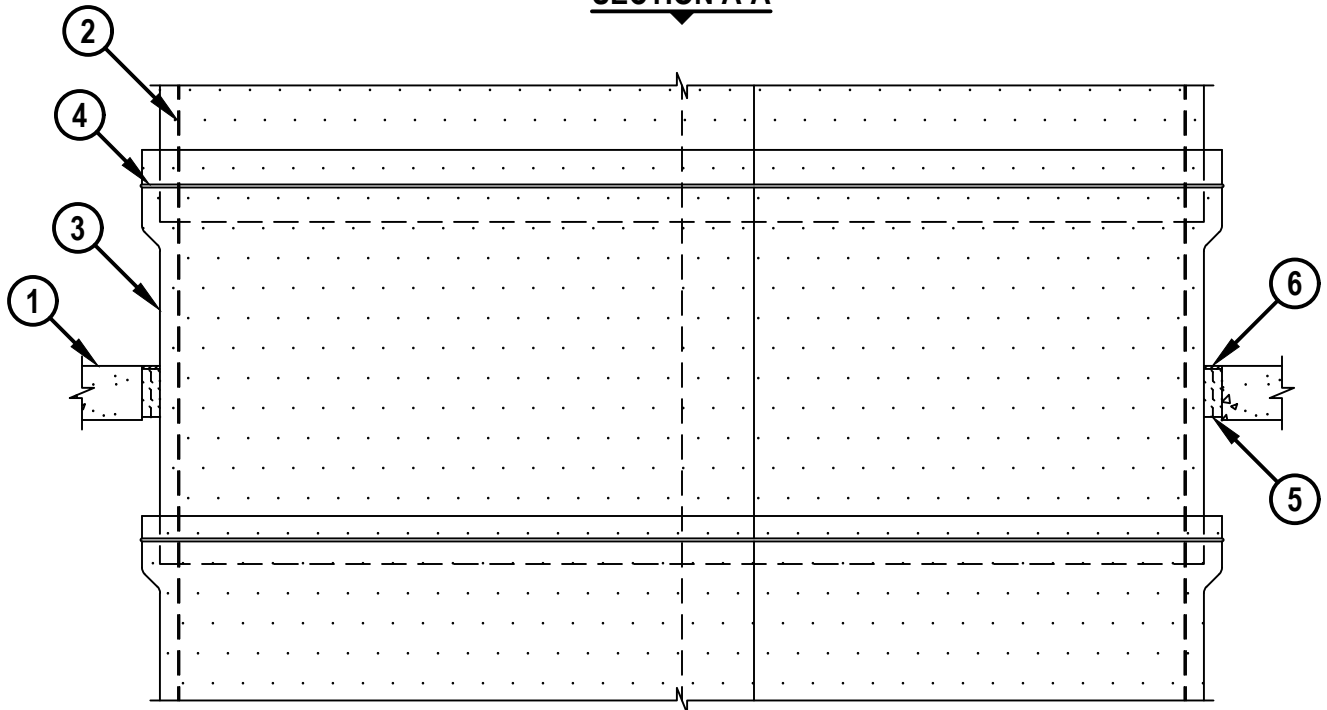
F-RATING = 1-HR. OR 2-HR.
T-RATING = 1-HR. OR 2-HR.

CAJ7152b.030723

TOP VIEW



SECTION A-A



HILTI, Inc.
Plano, Texas USA (800) 879-8000

Sheet	1 of 2
Scale	1/16" = 1"
Date	Mar. 07, 2023

Drawing No.

**CAJ
7152b**

Saving Lives through Innovation and Education

UL/cUL SYSTEM NO. C-AJ-7152

**INSULATED DUCT (THERMAL CERAMICS THROUGH CONCRETE FLOOR/WALL
OR BLOCK WALL ASSEMBLY**

F-RATING = 1-HR. OR 2-HR.
T-RATING = 1-HR. OR 2-HR.

CAJ7152b.030723

1. CONCRETE FLOOR OR WALL ASSEMBLY (1-HR. OR 2-HR. FIRE-RATING) :
 - A. LIGHTWEIGHT OR NORMAL WEIGHT CONCRETE FLOOR (MINIMUM 4-1/2" THICK).
 - B. LIGHTWEIGHT OR NORMAL WEIGHT CONCRETE WALL (MINIMUM 4-3/4" THICK).
 - C. ANY UL/cUL CLASSIFIED CONCRETE BLOCK WALL.
2. CARBON STEEL AIR DUCT (MIN. 26 GA.) WITH MAXIMUM PERIMETER DIMENSION OF 216" AND A MAXIMUM INDIVIDUAL DIMENSION OF 84".
3. NOMINAL 1-1/2" THICK FIREMASTER FAST WRAP XL, FIREMASTER FASTWRAP+, OR PYROSTAT DUCT WRAP XL (MANUFACTURED BY THERMAL CERAMICS) INSTALLED PER MANUFACTURER'S INSTRUCTIONS.
4. MINIMUM 1/2" WIDE x 0.015" THICK CARBON STEEL BANDING STRAPS SPACED 12" OC AND 1-1/2" FROM TRANSVERSE JOINTS OF DUCT WRAP.
5. MINIMUM 4" THICKNESS MINERAL WOOL SAFING (MIN. 3 PCF DENSITY) OR UNFACED DUCT WRAP MATERIAL TIGHTLY PACKED.
6. MINIMUM 1/4" DEPTH HILTI CFS-S SIL GG FIRESTOP SILICONE SEALANT OR HILTI CFS-S SIL SL FIRESTOP SILICONE SEALANT (FLOORS ONLY).

NOTES : 1. MAXIMUM AREA OF OPENING = 18.75 SQ. FT., WITH A MAXIMUM DIMENSION OF 90".
2. ANNULAR SPACE = NOMINAL 3".
3. MINIMUM 1/4" DEPTH HILTI CFS-S SIL GG FIRESTOP SILICONE SEALANT IS REQUIRED ON BOTH SIDES OF A WALL ASSEMBLY.



HILTI, Inc.
Plano, Texas USA (800) 879-8000

Sheet	2 of 2
Scale	-
Date	Mar. 07, 2023

Drawing No.

**CAJ
7152b**

Saving Lives through Innovation and Education