

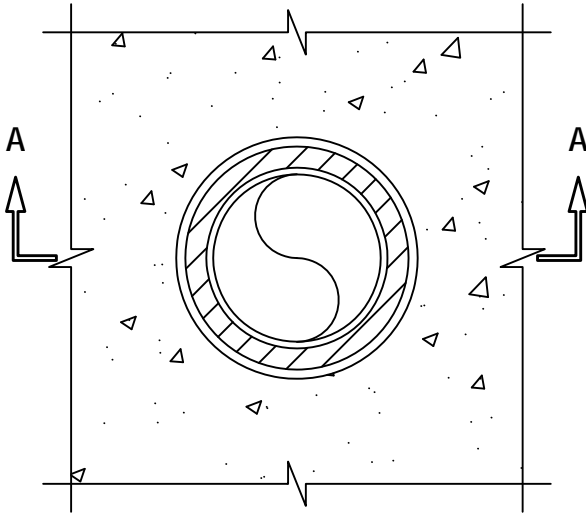
INSULATED PIPE THROUGH CONCRETE FLOOR ASSEMBLY

F-RATING = 3-HR.

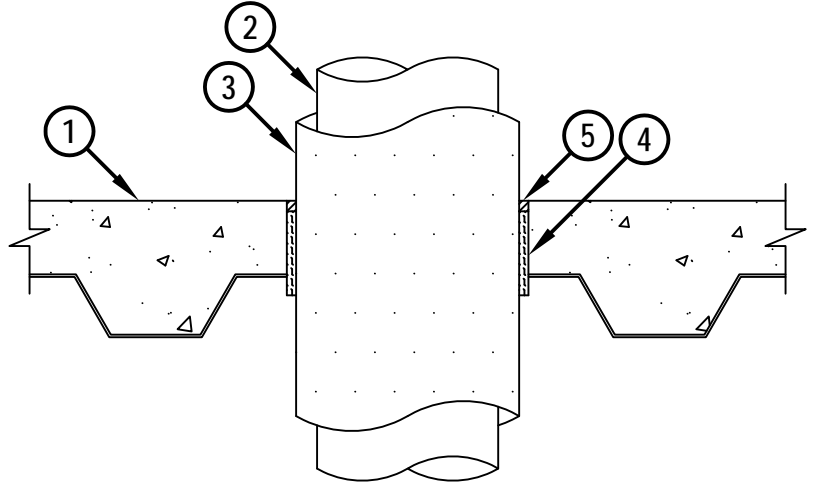
T-RATING = 1-HR.

FA5047a.012114

TOP VIEW



SECTION A-A



1. LIGHTWEIGHT OR NORMAL WEIGHT CONCRETE FLOOR (MINIMUM 3-1/2" THICK) OVER METAL DECKING (2" TO 3" FLUTES) (3-HR. FIRE-RATING).
2. PENETRATING ITEM TO BE ONE OF THE FOLLOWING :
 - A. MAXIMUM 8" NOMINAL DIAMETER STEEL PIPE (SCHEDULE 40 OR HEAVIER).
 - B. MAXIMUM 8" NOMINAL DIAMETER CAST OR DUCTILE IRON PIPE.
 - C. MAXIMUM 4" NOMINAL DIAMETER COPPER PIPE OR TUBING.
3. NOMINAL 1" THICK GLASS-FIBER PIPE INSULATION.
4. MINIMUM 4" THICKNESS MINERAL WOOL SAFING (MIN. 4 PCF DENSITY) TIGHTLY PACKED AND RECESSED TO ACCOMMODATE SEALANT.
5. MINIMUM 1/2" DEPTH HILTI CFS-S SIL GG FIRESTOP SILICONE SEALANT OR HILTI CFS-S SIL SL FIRESTOP SILICONE SEALANT.

NOTES : 1. MAXIMUM DIAMETER OF OPENING = 11-1/2".
 2. ANNULAR SPACE = MINIMUM 1/4", MAXIMUM 5/8".



HILTI, Inc.
 Tulsa, Oklahoma USA (800) 879-8000

Sheet	1 of 1
Scale	7/64" = 1"
Date	Jan. 21, 2014

Drawing No.
FA 5047a