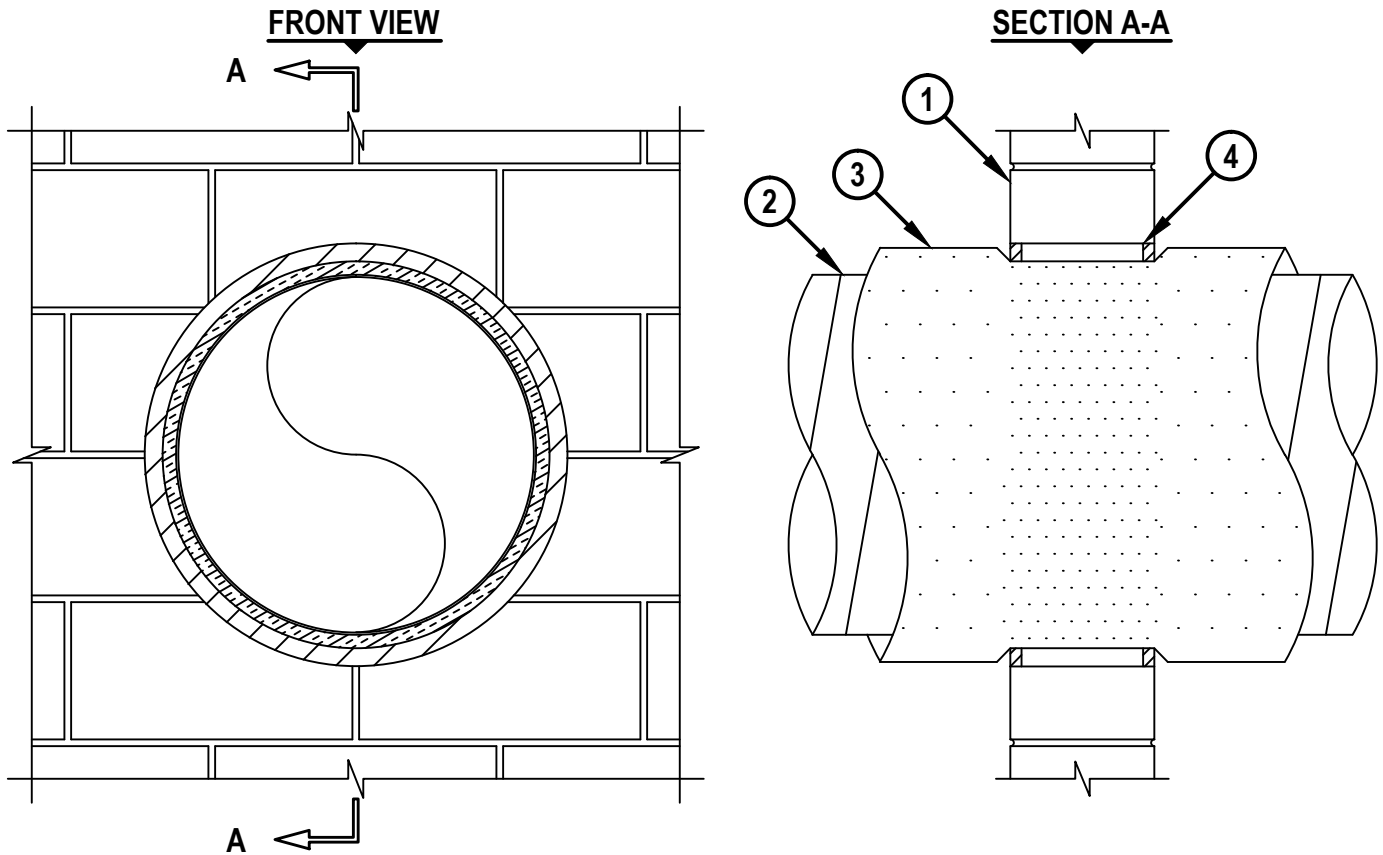


INSULATED DUCT THROUGH CONCRETE WALL OR BLOCK WALL ASSEMBLY

F-RATING = 1-HR. OR 2-HR.

T-RATING = 1/2-HR.

WJ7124c.020218



1. CONCRETE WALL ASSEMBLY (1-HR. OR 2-HR. FIRE-RATING) :
 - A. LIGHTWEIGHT OR NORMAL WEIGHT CONCRETE WALL (MINIMUM 5" THICK).
 - B. ANY UL/cUL CLASSIFIED CONCRETE BLOCK WALL.
2. PENETRATING ITEM TO BE ONE OF THE FOLLOWING :
 - A. MAXIMUM 20" NOMINAL DIAMETER SPIRAL WOUND SHEET METAL DUCT (MIN. 24 GA.).
 - B. MAXIMUM 12" NOMINAL DIAMETER SHEET METAL DUCT (MIN. 28 GA.).
3. NOMINAL 1-1/2" OR 2" THICK GLASS-FIBER DUCT INSULATION (MIN. 3/4 PCF DENSITY) WITH FOIL-SCRIM-KRAFT FACING (SEE NOTE NO. 2 BELOW).
4. MINIMUM 5/8" DEPTH HILTI FS-ONE MAX INTUMESCENT FIRESTOP SEALANT.

NOTES : 1. MAXIMUM DIAMETER OF OPENING = 24".
 2. INSULATION SHOULD BE COMPRESSED 50% SUCH THAT THE ANNULAR SPACE = MINIMUM 1/4", MAXIMUM 1-1/2".

 Hilti Firestop Systems	HILTI, Inc. Plano, Texas USA (800) 879-8000	Sheet 1 of 1	Drawing No. WJ 7124c
		Scale 3/32" = 1"	
		Date Feb. 02, 2018	
Saving Lives through Innovation and Education			