

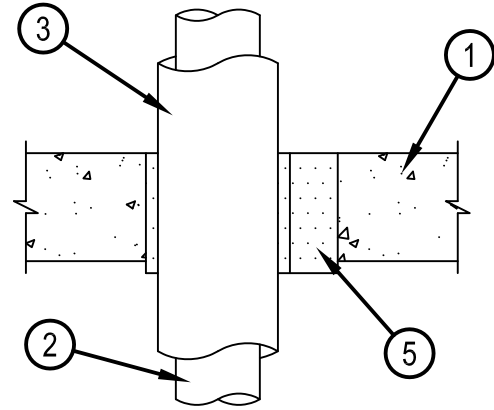
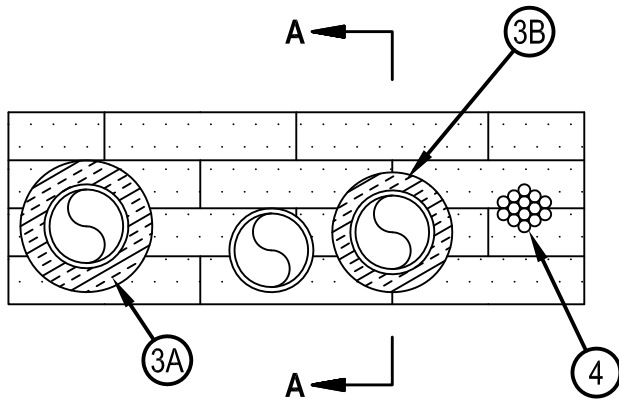


Classified by
Underwriters Laboratories, Inc.
to UL 1479 and CAN/ULC-S115

System No. C-AJ-8208

CAJ 8208

ANSI/UL1479 (ASTM E814)	CAN/ULC S115
F Rating — 2 and 3 Hr (See Item 2)	F Rating — 2 and 3 Hr (See Item 2)
T Rating — 0, 3/4 and 1 Hr (See Items 2, 3 and 4)	FT Rating — 0, 3/4 and 1 Hr (See Items 2, 3 and 4)
	FH Rating — 2 and 3 Hr
	FTH Rating — 0, 3/4 and 1 Hr (See Items 2, 3 and 4)



SECTION A-A

1. Floor or Wall Assembly — Min 4-1/2 in. (114 mm) thick reinforced lightweight or normal weight (100-150 pcf or 1600-2400 kg/m³) concrete floor or min 5 in. (127 mm) reinforced lightweight or normal weight concrete wall. Wall may also be constructed of any UL Classified Concrete Blocks*. Max area of opening is 192 in² (1239 cm²) with max dimension of 24 in. (610 mm).
See Concrete Blocks (CAZT) category in the Fire Resistance Directory for names of manufacturers.
2. Through-Penetrant — One or more pipes or tubes to be installed within the opening. The total number of through-penetrants is dependent on the size of the opening and types and sizes of the penetrants. Any combination of the penetrants described below may be used provided that the following parameters relative to the annular spaces and the spacings between the pipes are maintained. The separation between cable bundle, tubes and insulated tubes shall be a min 1/2 in. (13 mm) to max 12 in. (305 mm). The annular space between penetrants and the periphery of opening shall be a min 1/2 in. (13 mm) to max 12 in. (305 mm). For 2 hr F and FH Ratings only, there is no limitation on the maximum annular space. Pipes or tubes to be rigidly supported on both sides of floor or wall assembly. The following types and sizes of metallic pipes or tubes may be used.

 - A. Copper Tubing — Nom 3 in. (76 mm) diam (or smaller) Type L (or heavier) copper tube.
 - B. Copper Pipe — Nom 3 in. (76 mm) diam (or smaller) Regular (or heavier) copper pipe.

The hourly T, FT and FTH Ratings shall not exceed 0 hr when copper pipe or tubing is used with no pipe insulation.
3. Pipe Insulation — (Optional)—The following types of pipe insulation may be used:

 - A. Pipe Covering* — Nom 1 in. (25 mm) thick hollow cylindrical heavy density (min 3.5 pcf) glass fiber units jacketed on the outside with an all service jacket. Longitudinal joints sealed with metal fasteners or factory-applied self-sealing lap tape. Transverse joints secured with metal fasteners or with butt tape supplied with the product. The hourly T, FT and FTH Ratings shall not exceed 1 hr when copper pipe or tubing is used with this pipe covering.
See Pipe and Equipment Covering —Materials (BRGU) category in the Building Materials Directory for names of manufacturers. Any pipe covering material meeting the above specifications and bearing the UL Classification Marking with a Flame Spread Index of 25 or less and a Smoke Developed Index of 50 or less may be used.
 - B. Tube Insulation-Plastics+++ — Nom 3/4 in. (19 mm) thick acrylonitrile butadiene/polyvinyl chloride (AB/PVC) flexible foam furnished in the form of tubing. The hourly T, FT and TH Ratings shall not exceed 3/4 hr when copper pipe or tubing is used with this tube insulation.
See Plastics+++—(QMFZ2) category in the Plastics Recognized Component Directory for names of manufacturers. Any Recognized Component tube insulation material meeting the above specifications and having a UL 94 Flammability Classification of 94-5VA may be used.



Hilti Firestop Systems

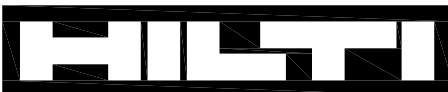
Reproduced by HILTI, Inc. Courtesy of
Underwriters Laboratories, Inc.
January 14, 2015

System No. C-AJ-8208

4. Cables — Max 2 in. (51 mm) diam tight bundle of cables installed within the opening and rigidly supported on both sides of floor or wall assembly. The space between the cables and periphery of the opening shall range from min 2 in. (51 mm) to max 4 in. (102 mm). Any combination of the following types and sizes of metallic conductor of fiber optic cable may be used:
- A. Max 500 kcmil single copper conductor power cable with thermoplastic insulation and polyvinyl chloride (PVC) jacket.
 - B. Max 300 pair No. 24 AWG copper conductor telecommunication cables with PVC insulation and jacket material.
 - C. Max 7/C copper conductor No. 12 AWG multiconductor power and control cables with PVC or cross-linked polyethylene (XLPE) insulation and PVC jacket.
 - D. Multiple fiber optical communication cables jacketed with PVC and having a max outside diam of 1/2 in. (13 mm).
 - E. Max 3/C copper conductor No. 12 AWG with bare aluminum ground, PVC insulated steel Metal-Clad cable.
- The hourly T, FT and FTH Ratings shall not exceed 0 hr when cables are used.
5. Firestop System — The firestop system shall consist of the following:
- A. Fill Void or Cavity Materials*- Fire Blocks — Fire blocks installed with 5 in. (127 mm) dimension projecting through opening, flush with top surface of floor assembly or both surfaces of wall assembly. Blocks to be firmly packed to completely fill the entire width of opening of floor or wall assembly.
HILTI CONSTRUCTION CHEMICALS, DIV OF HILTI INC — CFS-BL Firestop Block
 - B. Fill Void or Cavity Materials*- — Fill material applied to maximum extent possible to fill any voids that may exist around penetrants and within the opening.
HILTI CONSTRUCTION CHEMICALS, DIV OF HILTI INC — FS-ONE Sealant, FS-ONE MAX Intumescent Sealant or CP618 Putty Stick

+++Bearing the UL Recognized Component Marking

* Indicates such products shall bear the UL or cUL Certification Mark for jurisdictions employing the UL or cUL Certification (such as Canada), respectively.



Hilti Firestop Systems

Reproduced by HILTI, Inc. Courtesy of
Underwriters Laboratories, Inc.
January 14, 2015