

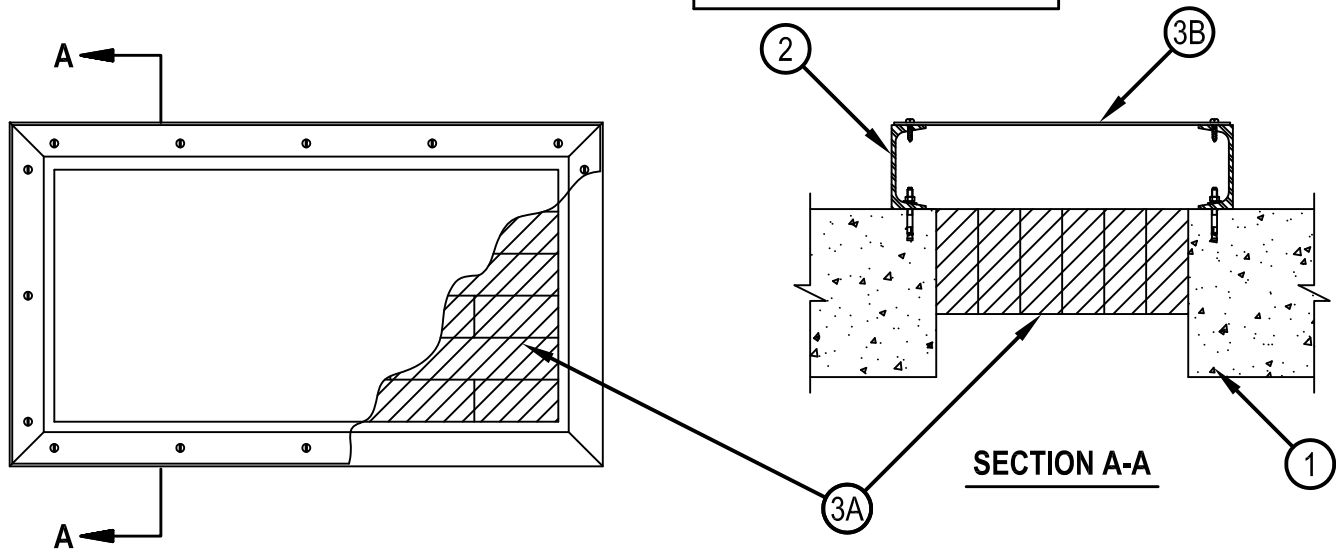


Classified by  
Underwriters Laboratories, Inc.  
to UL 1479 and CAN/ULC-S115

## System No. C-BJ-0022

CBJ 0022

ANSI/UL1479 (ASTM E814)	CAN/ULC S115
F Rating — 2 Hr	F Rating — 2 Hr
T Rating — 2 Hr	FT Rating — 2 Hr
	FH Rating — 2 Hr
	FTH Rating — 2 Hr



1. Floor or Wall Assembly — Min 8 in. (203 mm) thick reinforced lightweight or normal weight (100-150 pcf or 1600-2400 kg/m<sup>3</sup>) concrete. Max area of opening is 288 sq. in. (1858 cm<sup>2</sup>) with max dimension of 24 in. (610 mm).
- 1A. Floor Assembly - (Optional - Not Shown) — The fire rated unprotected concrete and steel floor assembly shall be constructed of the materials and in the manner specified in the individual D900 Series designs in the UL Fire Resistance Directory and as summarized below:
  - A. Concrete — Min 8 in (203 mm) thick reinforced lightweight or normal weight (100-150 pcf or 1600-2400 kg/m<sup>3</sup>) concrete.
  - B. Steel Floor and Form Units\* — Composite or non-composite max 3 in. (76 mm) deep galv steel fluted units as specified in the individual Floor-Ceiling Design.
2. Sheathing — Nom 1-1/2 by 4 by 3/16 in. (38 by 102 by 4.8 mm) thick steel channel shaped members secured to the concrete (Item 1) by means of 1/4 in. (6 mm) diam by 1-1/4 in. (32 mm) long steel concrete screw fasteners spaced 6 to 8 in. (152 to 203 mm) OC. The sheathing shall completely enclose the perimeter of the opening on top surface of floor assembly and one surface of wall assembly for asymmetrical systems and both surfaces of wall assembly for symmetrical systems.
3. Firestop System — The firestop system may be installed as an asymmetrical system in a floor and symmetrical or asymmetrical in a wall assembly. The firestop system shall consist of the following items:
  - A. Fill, Void or Cavity Materials\* - Fire Blocks — Fire blocks installed with 5 in. (127 mm) dimension projecting through opening, flush with the top surface of concrete floor or either surface of concrete wall. Blocks to be firmly packed and completely fill the entire area of the opening. Either one or a combination of the block types specified below may be used.  
HILTI CONSTRUCTION CHEMICALS, DIV OF HILTI INC — FS 657 Fire Block or CFS-BL Firestop Block
  - B. Steel Cover Plate — Min 0.026 in. (0.66 mm) thick (No. 22 MSG) steel plate shall be placed over the entire opening. Steel cover plate secured to the sheathing with 1/4-20 bolts spaced 5 to 7 in. (127 to 178 mm) OC.

\*Bearing the UL Classification Mark



**Hilti Firestop Systems**

Reproduced by HILTI, Inc. Courtesy of  
Underwriters Laboratories, Inc.  
December 12, 2011