

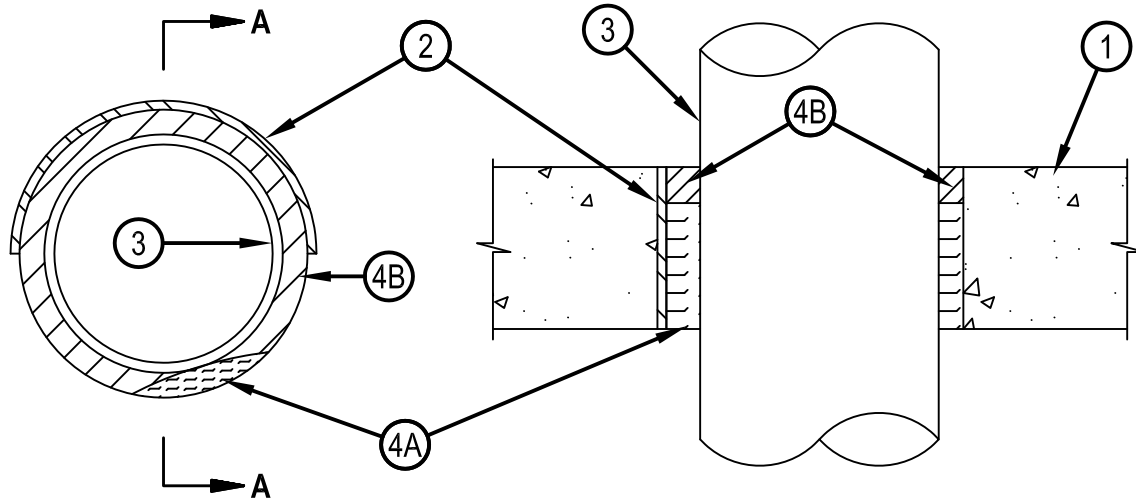


Classified by
Underwriters Laboratories, Inc.
to UL 1479 and CAN/ULC-S115

System No. C-BJ-1037

ANSI/UL1479 (ASTM E814)	CAN/ULC S115
F Rating — 4 Hr	F Rating — 4 Hr
T Rating — 0 Hr	FT Rating — 0 Hr
	FH Rating — 4 Hr
	FTH Rating — 0 Hr

CBJ 1037



SECTION A-A

1. Floor, Roof or Wall Assembly* — The fire-rated floor- or roof-ceiling assembly shall be constructed of Precast Autoclaved Aerated Concrete* in the manner specified in Design Nos. K908 or P931, respectively, and the fire rated wall assembly shall be constructed of Precast Autoclaved Aerated Concrete* in the manner specified in Design Nos. U916 or U917 in the UL Fire Resistance Directory. Max diam of opening is 8 in. (203 mm).

AERCON FLORIDA L L C — Types AC-3.3, AC-4, AC-4.4, AC-6, AC-6.6.
BABB INTERNATIONAL/HEBEL — HBL-32, HBL-38 and HBL-44
2. Metallic Sleeve — (Optional) — Nom 8 in. (203 mm) diam (or smaller) Schedule 10 steel pipe, cast or grouted into floor or wall assembly, flush with floor or wall surfaces.
3. Through Penetrants — One metallic pipe, conduit or tubing to be installed within the firestop system. The annular space between pipe, conduit or tubing and periphery of opening shall be 15/16 in. (24 mm) when sleeve is used and min 0 in. (point contact) to max 1-7/8 in. (48 mm) when sleeve is not used. Pipe, conduit or tubing to be rigidly supported on both sides of floor or wall assembly. The following types and sizes of metallic pipes, conduits or tubing may be used:

 - Steel Pipe — Nom 6 in. (152 mm) diam (or smaller) Schedule 10 (or heavier) steel pipe.
 - Iron Pipe — Nom 6 in. (152 mm) diam (or smaller) cast or ductile iron pipe.
 - Conduit — Nom 4 in. (102 mm) diam (or smaller) steel electrical metallic tubing or nom 6 in. (152 mm) diam (or smaller) steel conduit.
 - Copper Tubing — Nom 6 in. (152 mm) diam (or smaller) Type L (or heavier) copper tubing.
 - Copper Pipe — Nom 6 in. (152 mm) diam (or smaller) Regular (or heavier) copper pipe.
4. Firestop System — The firestop system shall consist of the following:

 - A. Packing Material — Min 4 in. (102 mm) thickness of min 4 pcf (64 kg/m³) mineral wool batt insulation firmly packed into opening as a permanent form. Packing material to be recessed from top surface of the floor or both surfaces of the wall as required to accommodate the required thickness of fill material.
 - B. Fill, Void or Cavity Material* — (Sealant) — Min 1 in. (25 mm) thickness of fill material applied within the annulus, flush with top surface of floor or with both surfaces of wall. At the point contact location between pipe and concrete, a min 1/2 in. (13 mm) diam bead of fill material shall be applied at the concrete/pipe interface on the top surface of floor and on both surfaces of wall.

HILTI CONSTRUCTION CHEMICALS, DIV OF HILTI INC — FS-ONE Sealant or FS-ONE MAX Intumescent Sealant

* Indicates such products shall bear the UL or cUL Certification Mark for jurisdictions employing the UL or cUL Certification (such as Canada), respectively.



Hilti Firestop Systems

Reproduced by HILTI, Inc. Courtesy of
Underwriters Laboratories, Inc.

January 14, 2015