

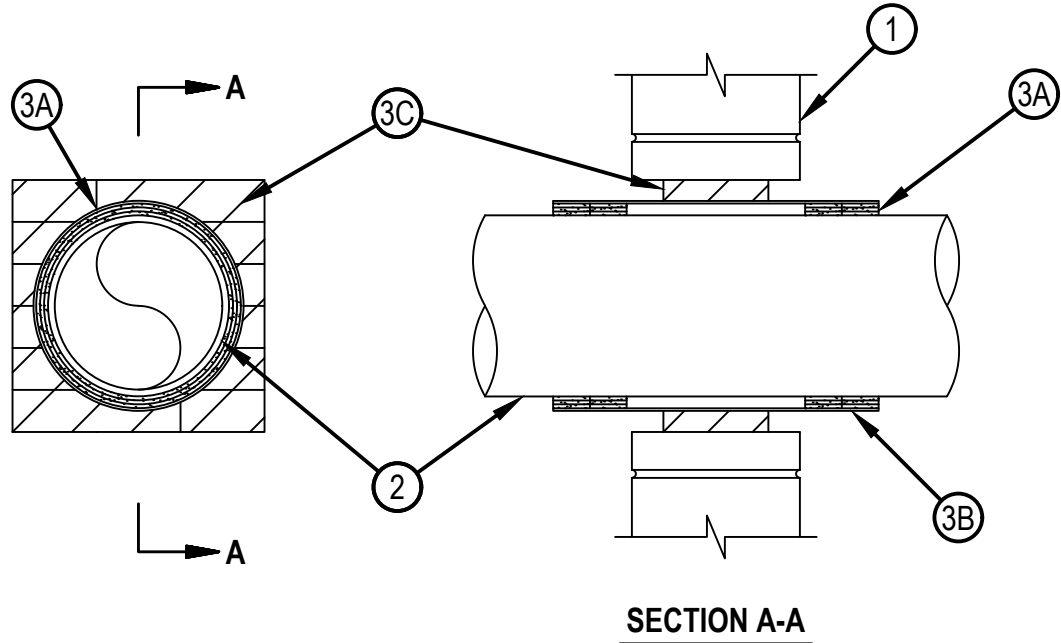


Classified by
Underwriters Laboratories, Inc.
to UL 1479

System No. W-J-2255

F Rating — 2 Hr
T Rating — 1-1/2 Hr

WJ 2255



1. Wall Assembly — Min 6 in. (152 mm) thick lightweight or normal weight (100-150 pcf or 1600-2400 kg/m³) concrete. Wall may also be constructed of any solid or filled UL Classified Concrete Blocks*. Max area of opening is 144 in² (929 cm²) with max dimension of 12 in. (305 mm).

See Concrete Blocks category in the Fire Resistance Directory for names of manufacturers.

2. High Density Polyethylene (HDPE) Pipe — Nom 8 in. (203 mm) diam (or smaller) SDR11 HDPE pipe for use in closed (process or supply) piping systems. One pipe to be installed either concentrically or eccentrically within the firestop system. The annular space between penetrant and periphery of opening shall be min 1-1/4 in. (32 mm). Pipe to be rigidly supported on both sides of wall assembly.

3. Firestop System — The firestop system shall consist of the following:

A. Fill, Void or Cavity Material* — Wrap Strip — Nom 3/16 in. (4.8 mm) thick by 1-3/4 in. (45 mm) wide intumescent wrap strip. Three layers of wrap strip are continuously wrapped around the pipe and held in place with tape. Wrap strip is to be double-stacked and installed at each side of wall opening, flush with both ends of steel sleeve (Item 3B).

HILTI CONSTRUCTION CHEMICALS, DIV OF HILTI INC — Hilti CP 648E/1-3/4 Wrap Strip

B. Steel Sleeve — Cylindrical sleeve fabricated from min 30 ga 0.016 in. (0.41 mm) thick galv sheet steel and having a min 2 in. (51 mm) lap along the longitudinal seam. Sleeve to extend 3-1/4 to 3-3/4 in. (82 to 95 mm) beyond each surface of wall. The sleeve shall be compressed around the pipe (Item 2) and wrap strip (Item 3A) and secured together with 4 No 8 sheet metal screws on each end of sleeve.

C. Fill, Void or Cavity Material* — Fire blocks installed with min. 5 in. (127 mm) dimension passing through and centered within the opening. Blocks to be firmly packed and completely fill the entire opening between the sleeve and periphery of opening.

HILTI CONSTRUCTION CHEMICALS, DIV OF HILTI INC — CFS-BL Firestop Block

D. Fill, Void or Cavity Material* — (Not Shown) Fill material to be forced into any voids/openings between blocks, around penetrants, and between blocks and periphery of opening to the maximum extent possible on both surfaces of wall.

HILTI CONSTRUCTION CHEMICALS, DIV OF HILTI INC — FS-ONE Sealant, FS-ONE MAX Intumescent Sealant, CP618 Firestop Putty Stick, CP 660 Firestop Foam or CP 620 Fire Foam

* Indicates such products shall bear the UL or cUL Certification Mark for jurisdictions employing the UL or cUL Certification (such as Canada), respectively.



Hilti Firestop Systems

Reproduced by HILTI, Inc. Courtesy of
Underwriters Laboratories, Inc.
January 25, 2016