



Classified by  
Underwriters Laboratories, Inc.  
to UL 1479

## System No. W-L-1497

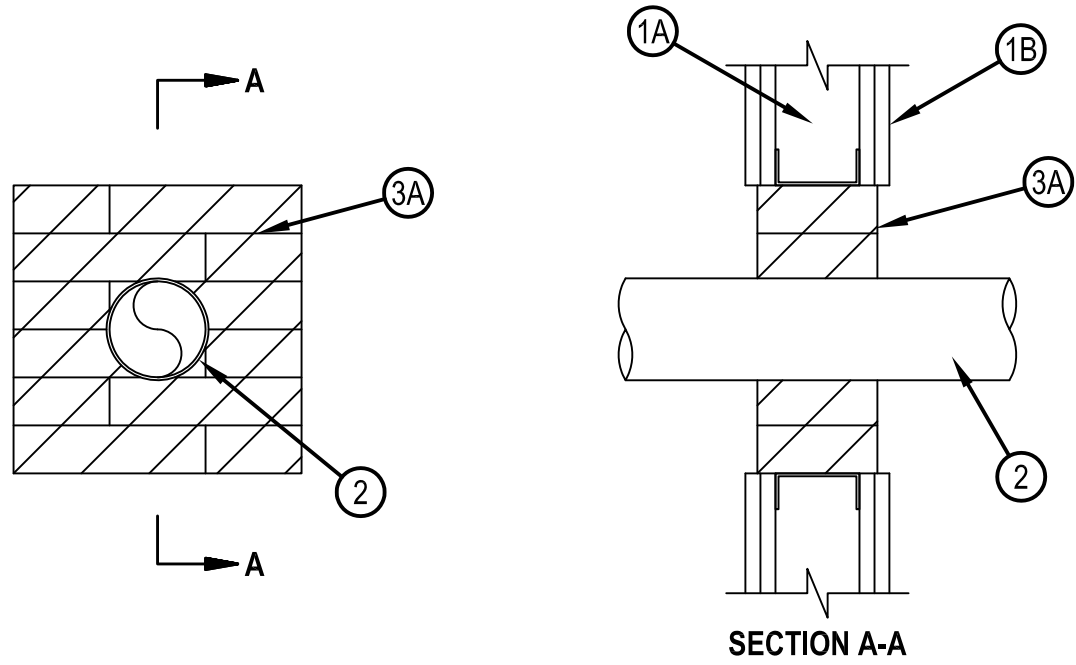
F Ratings — 1 and 2 Hr (See Item 1)

T Rating — 1/4 Hr

L Rating At Ambient — 5 CFM/sq ft (See Item 3B)

L Rating At 400 F — 2 CFM/sq ft (See Item 3B)

WL 1497



1. Wall Assembly — The 1 or 2 hr fire-rated gypsum board/stud wall assembly shall be constructed of the materials and in the manner specified in the individual U300, U400, V400 or W400 Series Wall and Partition Designs in the Fire Resistance Directory and shall include the following construction features
  - A. Studs — Wall framing shall consist of either wood studs or channel shaped steel studs. Wood studs to consist of 2 in. (51 mm) by 4 in. (102 mm) lumber spaced 16 in. (406 mm) OC. Steel studs to be min 3-1/2 in. (89 mm) wide, spaced max 24 in. (610 mm) OC.
  - B. Gypsum Board\* — Nom 5/8 in. (16 mm) thick, 4 ft. (1219 cm) wide with square or tapered edges. The gypsum board type, thickness, number of layers, fastener type and sheet orientation shall be as specified in the individual wall or partition design in the UL Fire Resistance Directory. Max area of opening is 144 in<sup>2</sup> (929 cm<sup>2</sup>) with max dimension of 12 in. (305 mm).

The hourly F Rating of the firestop system is equal to the hourly fire rating of the wall assembly in which it is installed.
2. Aluminum Tube — Nom 4 in. (102 mm) diam (or smaller) 0.125 in. (3 mm) thick (or heavier) aluminum tube for use in closed (process or supply) piping systems. One tube to be installed either concentrically or eccentrically within the firestop system. The annular space shall be min 3 in. (76 mm). Tubing to be rigidly supported on both sides of wall assembly.
3. Firestop System — The firestop system shall consist of the following:
  - A. Fill, Void or Cavity Material\* — Fire blocks installed with min. 5 in. (127 mm) dimension passing through and centered within the opening. Blocks to be firmly packed and completely fill the entire opening around the penetrant.  
HILTI CONSTRUCTION CHEMICALS, DIV OF HILTI INC — CFS-BL Firestop Block
  - B. Fill, Void or Cavity Material\* — Fill material to be forced into any voids/openings between blocks, around penetrants, and between blocks and periphery of opening to the maximum extent possible on both surfaces of wall.  
HILTI CONSTRUCTION CHEMICALS, DIV OF HILTI INC — FS-ONE Sealant, FS-ONE MAX Intumescent Sealant, CP618 Firestop Putty Stick, CP 660 Firestop Foam or CP 620 Fire Foam (Note: L Ratings apply only when FS-ONE Sealant is used.)

\* Indicates such products shall bear the UL or cUL Certification Mark for jurisdictions employing the UL or cUL Certification (such as Canada), respectively.



**Hilti Firestop Systems**

Reproduced by HILTI, Inc. Courtesy of  
Underwriters Laboratories, Inc.  
January 25, 2016