

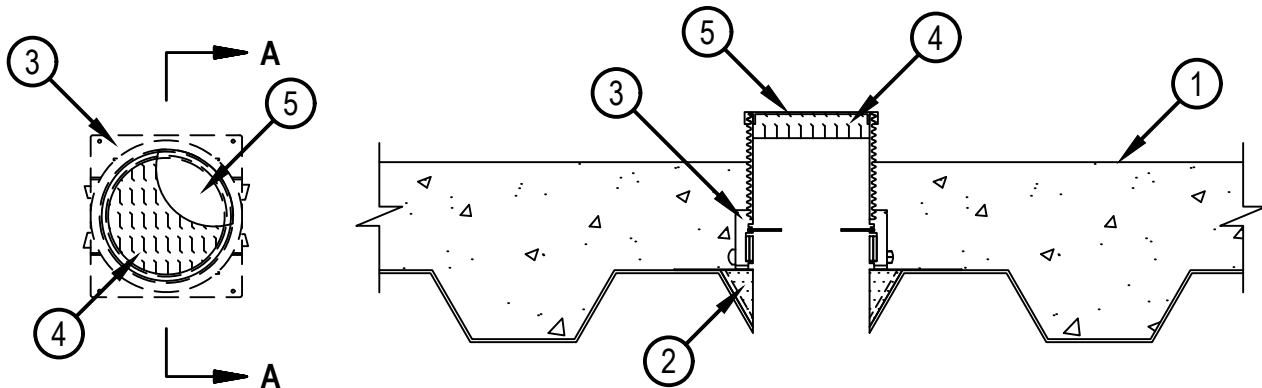


Classified by  
Underwriters Laboratories, Inc.  
to UL 1479 and CAN/ULC-S115

# System No. F-A-0041

FA 0041

ANSI/UL1479 (ASTM E814)	CAN/ULC S115
F rating - 3 Hr	F Rating - 3 Hr
T Rating - 3 Hr	FT Rating - 3 Hr
	FH Rating - 3 Hr
	FTH Rating - 3 Hr



**SECTION A-A**

1. Floor Assembly — The fire rated unprotected concrete and steel floor assembly shall be constructed of the materials and in the manner specified in the individual D900 Series designs in the UL Fire Resistance Directory and as summarized below:

A. Concrete — Min 4-1/2 in. (114 mm) thick reinforced lightweight or normal weight (100-150 pcf or 1600-2400 kg/m<sup>3</sup>) concrete.

B. Steel Floor and Form Units\* — Max 3 in. (76 mm) deep galv steel fluted units as specified in the individual Floor-Ceiling Design.

2. Firestop Device\* — Cast in place firestop device platform installed prior to concrete placement in floor assembly. The CFS-CID MD PLT firestop device platform is screwed to the fluted deck with one fastener at each corner in accordance with manufacturer installation instructions. The firestop device platform is sized for nominal 2 and 3 in. (51 and 76 mm) deep fluted decks.

HILTI CONSTRUCTION CHEMICALS, DIV OF HILTI INC — CFS-CID MD PLT W2" and W3"

3. Firestop Device\* — Cast in place firestop device installed over firestop device platform (Item 2) prior to concrete placement in floor assembly. The CFS-CID MD Firestop Device is set onto and screwed to the device platform in accordance with manufacturer installation instructions. The firestop device is sized for the diameter of the through penetrant and for the height of the concrete topping over the fluted deck. The 4" height devices shall be used. The firestop device may extend a max of 2 in. (51 mm) above the top surface of the concrete.

HILTI CONSTRUCTION CHEMICALS, DIV OF HILTI INC — CFS-CID MD M 2" / 4", 3" / 4" and 4" / 4" and CFS-CID MD P 2" / 4", 3" / 4" and 4" / 4" and CFS-CID MD PX 2" / 4", 3" / 4" and 4" / 4"

4. Packing Material — Min 1 in. (25 mm) thickness of min 4 pcf (64 kg/m<sup>3</sup>) mineral wool batt insulation firmly packed within the top of device (Item 3) above smoke seal gasket, flush with the top surface of the device.

5. Firestop Device\* - Firestop Device Cap — The firestop devices are provided with a plastic cap that is threaded onto top of device.

HILTI CONSTRUCTION CHEMICALS, DIV OF HILTI INC — CFS-CID MD M and CFS-CID MD P Caps

\* Indicates such products shall bear the UL or cUL Certification Mark for jurisdictions employing the UL or cUL Certification (such as Canada), respectively.



**Hilti Firestop Systems**

Reproduced by HILTI, Inc. Courtesy of  
Underwriters Laboratories, Inc.  
November 26, 2019