

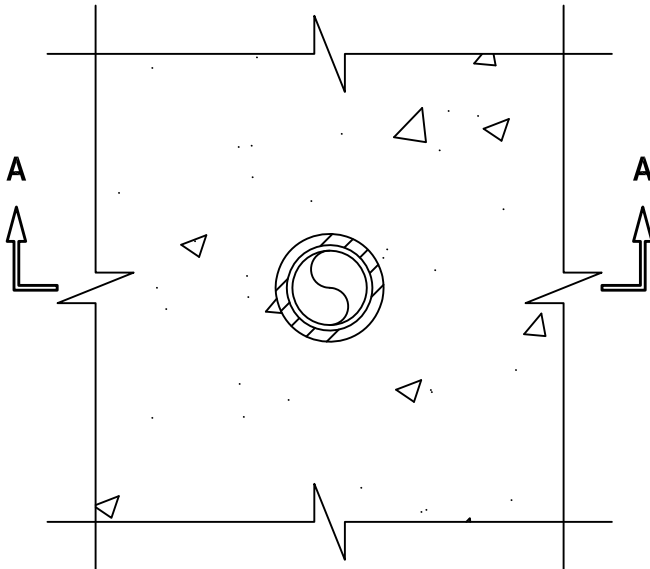
UL SYSTEM NO. C-AJ-2639

PLASTIC PIPE THROUGH CONCRETE FLOOR/WALL OR BLOCK WALL

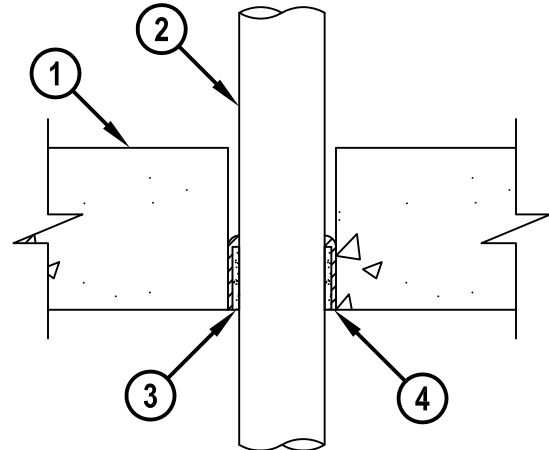
F-RATING = 2-HR.

T-RATING = 2-HR.

TOP VIEW



SECTION A-A



CAJ2639b.010515

1. CONCRETE FLOOR OR WALL ASSEMBLY (2-HR. FIRE-RATING) :
 - A. LIGHTWEIGHT OR NORMAL WEIGHT CONCRETE FLOOR OR WALL (MINIMUM 4-1/2" THICK).
 - B. ANY UL CLASSIFIED CONCRETE BLOCK WALL.
 - C. STEEL FLOOR UNIT FLOOR ASSEMBLY - LIGHTWEIGHT OR NORMAL WEIGHT CONCRETE FLOOR (MINIMUM 3-1/2" THICK) OVER METAL DECK (MINIMUM 1-1/2" DEEP GALVANIZED FLUTED UNITS).
2. PENETRATING ITEM TO BE ONE OF THE FOLLOWING :
 - A. MAXIMUM 2" NOMINAL DIAMETER FRPP PLASTIC PIPE (SCH 40) (CLOSED OR VENTED PIPING SYSTEM).
 - B. MAXIMUM 2" NOMINAL DIAMETER PVDF PLASTIC PIPE (SCH 40) (CLOSED OR VENTED PIPING SYSTEM).
3. HILTI CP 648E WRAP STRIP (NOMINAL 3/16" THICK x 1-3/4" WIDE) CONTINUOUSLY WRAPPED AROUND THE OUTER CIRCUMFERENCE OF THE PIPE, COVERING ONE TIME, WITH ENDS BUTTED AND HELD IN PLACE WITH (MASKING OR ALUMINUM) TAPE. WRAP STRIP TO BE INSERTED INTO ANNULAR SPACE, FLUSH WITH BOTTOM OF FLOOR IN STEEL DECK/CONCRETE FLOOR, THE BOTTOM SURFACE OF THE WRAP STRIP SHALL BE FLUSH WITH THE STEEL DECK AT THE HIGHEST ELEVATION OF THE FLOOR OPENING.
4. GENEROUS BEAD OF HILTI FS-ONE MAX OR FS-ONE INTUMESCENT FIRESTOP SEALANT APPLIED TO LEADING EDGE OF WRAP STRIP PRIOR TO INSERTION INTO ANNULAR SPACE. FS-ONE TO BE APPLIED TO COVER LEAD EDGE OF WRAP STRIP AND FILL ANNULAR SPACE BETWEEN THE WRAP STRIP AND CONCRETE.

NOTES : 1. MAXIMUM DIAMETER OF OPENING = 3".
2. ANNULAR SPACE = NOMINAL 5/16".



HILTI, Inc.
Tulsa, Oklahoma USA (800) 879-8000

Sheet	1 of 1
Scale	3/16" = 1"
Date	Jan. 05, 2015

Drawing No.

**CAJ
2639b**

Saving Lives through Innovation and Education